

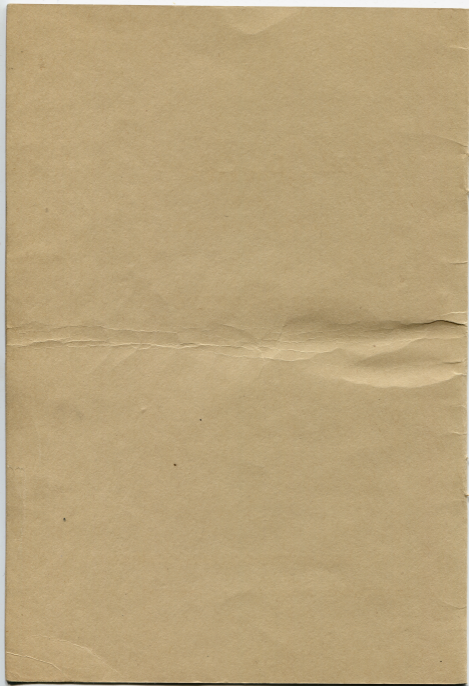
*Model DS Elrod*

**LIST OF PARTS**

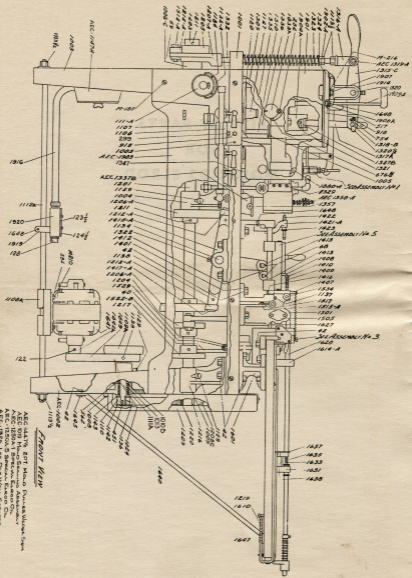
**LUDLOW TYPOGRAPH COMPANY**

**2032 Clybourn Avenue • • Chicago 14, Illinois**

*Ralph H. Nooty  
Herald Street*

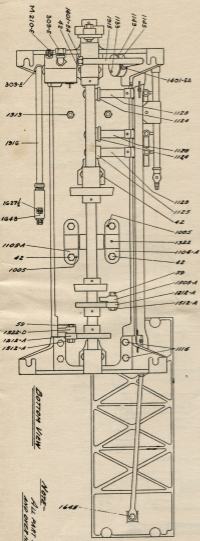


**LIST OF PARTS  
FOR  
MODEL DS ELROD**



**FRONT VIEW**

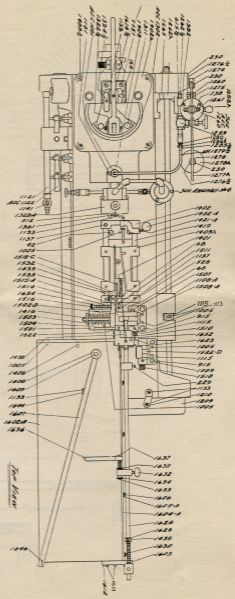
- ACC-14479, 207 Mils. Puncture-Warning Device
- ACC-509, Mine Detector
- ACC-1030, Mine Detector
- ACC-1030A1, Special, Elcano Co.
- ACC-1030A2, Special, Elcano Co.
- ACC-1030A3, Special, Elcano Co.
- ACC-1340, Mine Detector
- ACC-1340A, Mine Detector
- ACC-1340B, Mine Detector
- ACC-1340C, Mine Detector
- ACC-1340D, Mine Detector
- ACC-1340E, Mine Detector
- ACC-1340F, Mine Detector
- ACC-1340G, Mine Detector
- ACC-1340H, Mine Detector
- ACC-1340I, Mine Detector
- ACC-1340J, Mine Detector
- ACC-1340K, Mine Detector
- ACC-1340L, Mine Detector
- ACC-1340M, Mine Detector
- ACC-1340N, Mine Detector
- ACC-1340O, Mine Detector
- ACC-1340P, Mine Detector
- ACC-1340Q, Mine Detector
- ACC-1340R, Mine Detector
- ACC-1340S, Mine Detector
- ACC-1340T, Mine Detector
- ACC-1340U, Mine Detector
- ACC-1340V, Mine Detector
- ACC-1340W, Mine Detector
- ACC-1340X, Mine Detector
- ACC-1340Y, Mine Detector
- ACC-1340Z, Mine Detector



**BOTTOM VIEW**

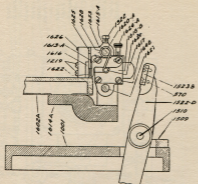
**Note**

All part numbers (and any other note) must be

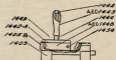
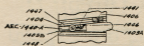


**TOP VIEW**

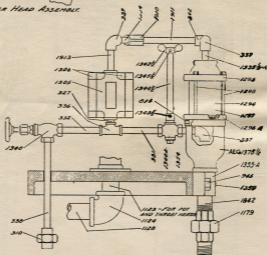
1276-E  
1274-E  
1270  
230  
1260  
1255  
1250  
1245  
1240  
1235  
1230  
1225  
1220  
1215  
1210  
1205  
1200  
1195  
1190  
1185  
1180  
1175  
1170  
1165  
1160  
1155  
1150  
1145  
1140  
1135  
1130  
1125  
1120  
1115  
1110  
1105  
1100  
1095  
1090  
1085  
1080  
1075  
1070  
1065  
1060  
1055  
1050  
1045  
1040  
1035  
1030  
1025  
1020  
1015  
1010  
1005  
1000  
995  
990  
985  
980  
975  
970  
965  
960  
955  
950  
945  
940  
935  
930  
925  
920  
915  
910  
905  
900  
895  
890  
885  
880  
875  
870  
865  
860  
855  
850  
845  
840  
835  
830  
825  
820  
815  
810  
805  
800  
795  
790  
785  
780  
775  
770  
765  
760  
755  
750  
745  
740  
735  
730  
725  
720  
715  
710  
705  
700  
695  
690  
685  
680  
675  
670  
665  
660  
655  
650  
645  
640  
635  
630  
625  
620  
615  
610  
605  
600  
595  
590  
585  
580  
575  
570  
565  
560  
555  
550  
545  
540  
535  
530  
525  
520  
515  
510  
505  
500  
495  
490  
485  
480  
475  
470  
465  
460  
455  
450  
445  
440  
435  
430  
425  
420  
415  
410  
405  
400  
395  
390  
385  
380  
375  
370  
365  
360  
355  
350  
345  
340  
335  
330  
325  
320  
315  
310  
305  
300  
295  
290  
285  
280  
275  
270  
265  
260  
255  
250  
245  
240  
235  
230  
225  
220  
215  
210  
205  
200  
195  
190  
185  
180  
175  
170  
165  
160  
155  
150  
145  
140  
135  
130  
125  
120  
115  
110  
105  
100  
95  
90  
85  
80  
75  
70  
65  
60  
55  
50  
45  
40  
35  
30  
25  
20  
15  
10  
5  
0



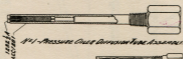
NR 3-Cutter Head Assembly



NR 5-Puller Wedge Assembly



NR 4-Water Circulation Assembly



NR 1-Pressure Cooled Division Tube Assembly

AEC  
1800  
D.S.



NR 2-Check Valve Assembly

## MAIN FRAME

Part No.	Name of Part
EC1001	Main Frame (Table) .....
AEC1002	Right Hand Leg .....
EC1003	Left Hand Leg .....
	Leg Screw (use EC1116) .....
EC1004	Cam Shaft Bearing Bracket (Center) .....
	Cam Shaft Bearing Bracket Screw (use 42) .....
EC1005	Dowel Pin .....
EC1006C	Main Shaft Bearing Bracket .....
EC1008	Condulet Screw .....
EC1009	Cam Shaft Bearing Bracket (Right) .....
	Cam Shaft Bearing Bracket Screw (use 42) .....
EC1010B	Drive Shaft Bushing .....
EC1013	Drive Shaft Bushing Collar .....
EC1024	Set Screw .....
EC1112A	Leg Brace .....
EC1116	Leg Screw .....
AEC1903	Table Apron .....

*When ordering parts, always give serial number of the machine.*

## GAS HEATING AND DRIVING MECHANISM

Part No.	Name of Part
AEC1019	Mold Sealing Plate Assembly (See Assembly, page 14) . . . . .
EC1104A	Puller Slide Lever Shaft Bracket (Front) . . . . .
EC1105A	Puller Slide Lever Shaft Bracket (Rear) . . . . . Puller Slide Lever Shaft Bracket Screw (use 42) Puller Slide Lever Shaft Bracket Dowel (use EC1005)
EC1106	Manifold Bracket . . . . . Manifold Bracket Screw (use 915) Manifold Bracket Dowel (use EC1005)
EC1107	Manifold Clamp . . . . . Manifold Clamp Screw (use 299)
EC1108A	Motor Table . . . . .
EC1109A	Drive Shaft Pulley . . . . . Drive Shaft Pulley Set Screw (use EC1138)
EC1110	Drive Pinion . . . . . Drive Pinion Dowel (use EC1612)
EC1111A	Drive Shaft . . . . .
EC1113	Motor Table Adjusting Collar . . . . .
EC1113½	Hexagon Nut . . . . .
EC1115	Motor Table Adjusting Collar Set Screw . . . . .
EC1116	Leg Screw . . . . .
EC1120	Pot and Throat Heater Washer . . . . .
EC1121	Gas Manifold . . . . .
AEC1122	Pot, Throat & Mouth Heater Mixer Assembly (each) . . . . .
EC1123	Pot and Throat Heater Nipple (each) . . . . .
EC1124	Pot and Throat Heater Elbow (each) . . . . .
EC1125	Mouth Heater Elbow . . . . . Mouth Heater (use EC1347—½" Nipple x 3½ Lg.)
EC1127	Pot and Throat Heater (each) . . . . .
EC1128	Pot, Throat & Mouth Heater Pipe (each) . . . . .
EC1129	Drive Shaft Grease Cup . . . . .
EC1132A	Motor Switch Guard . . . . .
EC1133	Round Head Screw . . . . .
EC1134	Puller Slide Cam Lever Shaft . . . . . Puller Slide Lever Shaft Set Screw (use EC1322)
EC1136	Drive Pinion Key . . . . .
EC1137	Puller Slide Support Set Screw . . . . .
EC1138	Square Head Set Screw . . . . .
EC1141	Torch Burner Connection . . . . .
EC1142	Drive Pinion Flange (right) . . . . .
EC1143	Drive Pinion Flange (left) . . . . .
EC1145	Motor Switch Box . . . . .
AEC1147A	Condulet Assem. . . . .
EC1149	Motor Switch Box Cover . . . . .
EC1151	Long Fillister Head Screw . . . . .
EC1161	Round Head Screw . . . . .



## GAS HEATING AND DRIVING MECHANISM (continued)

Part No.	Name of Part
EC1184	Motor Switch Guard Screw No. 8-32 x $\frac{3}{8}$ " .....
EC1401EA	$\frac{1}{2}$ " No Thread Connector .....
EC1915	Motor Switch Conduit .....
EC1916	Motor Conduit .....
EC1919	Unilet Clip .....
EC1920	Rectangular Unilet .....

*When ordering parts, always give serial number of the machine.*

## CAM MECHANISM PARTS

Part No.	Name of Part
AEC1201	Cam Shaft Assembly (See Assembly, page 14)
EC1201	Cam Shaft
EC1203	Cam Shaft Collar
EC1204	Material Clamp Cam
	Material Clamp Cam Roll (use EC1212A)
EC1205	Plunger Cam
EC1206A	Puller Slide Cam (right & left)
EC1207A	Plunger Lever Rod Yoke
	Plunger Cam Roll Stud (use EC1512A)
	Plunger Cam Roll Stud Nut (use 59)
EC1208C	Drive Gear
	Drive Gear Screw (use EC1220)
EC1209	Gear Guard
	Gear Guard Screw (use EC1008)
EC1210	Gear Guard Bracket
	Gear Guard Bracket Screw (use EC1133)
EC1211	Material Clamp Cam Pin
EC1212A	Plunger Cam Roll
	Plunger Cam Roll Stud Nut (use 59)
EC1216	Drive Gear Key
EC1217	Cut-Off Cam
	Cut-Off Cam Roll (use EC1212A)
EC1219	Slug Spring Guide Plate Screw
EC1220	Drive Gear Screw

## METAL POT AND PRESSURE OILER PARTS

Part No.	Name of Part
EC1179	3/4" Railroad Union
EC1243	Fillister Head Cap Screw
EC1258	Pressure Oiler Oil Cup
EC1259	Pressure Oiler Shut-Off Valve
AEC1260	Pressure Oiler Assembly Complete (See Assembly, page 14)
EC1260	Pressure Oiler Body
EC1260 1/2	5/16" Lock Washer
EC1261	Pressure Oiler Piston Sleeve
EC1262A	Pressure Oiler Bracket
EC1262 1/2	3/8"-16 Hexagon Head Cap Screw
EC1263	Pressure Oiler Piston Sleeve Plug
EC1264A	Pressure Oiler Cover
EC1265	Pressure Oiler Mounting Bushing (when Margach Feeder is not used)
EC1266A	Pressure Oiler Piston Stop
EC1266 1/2	Long Nipple, 1/8" x 7"
337	Pressure Oiler Feed Line Elbow
342	Pressure Oiler Feed Line Street Elbow
EC1267	Pressure Oiler Piston Stop Stud
AEC1268	Pressure Oiler Piston Assembly (See Assembly, page 15)
EC1268	Pressure Oiler Piston
EC1268 1/2	Pressure Oiler Piston Seal
EC1269	Shoulder Screw (For Pressure Oiler Piston)
EC1270	Pressure Oiler Piston Packing
EC1271	Pressure Oiler Piston Packing Retainer (use EC1243)
EC1272	Pressure Oiler Piston Roller
EC1273	Pressure Oiler Weight Link Lock Washer
EC1274	Pressure Oiler Adjusting Lever Link
EC1275	Shoulder Screw
EC1276	Pressure Oiler Weight Link
EC1276 1/2	Shoulder Screw
EC1277A	Pressure Oiler Adjusting Lever
EC1278A	Pressure Oiler Weight
EC1278 1/2	Pressure Oiler Feed Line Close Nipple
AEC1279 1/2	Pressure Oiler Feed Line Tube Assembly
EC1280	Pressure Oiler Feed Line Tubing Union
AEC1281B	Pressure Oiler Diffusion Tube Assembly (See Assembly, page 15)
AEC1281 1/2	Diffusion Tube Packing (20 capsules 40 pellets each)
EC1282	Packing Retainer
EC1282 1/2 A	Packing Retainer Screw (bottom)
AEC1294	Water Sight Drain Glass Assembly Complete (See Assembly, page 15)
EC1294	Water Sight Drain Glass
EC1295	Water Sight Drain Glass Flange (Top)
EC1296A	Water Sight Drain Glass Flange (Bottom)
EC1297	Water Sight Drain Glass Gasket

*When ordering parts, always give serial number of the machine.*

## METAL POT AND PRESSURE OILER PARTS (continued)

Part No.	Name of Part
EC1298	Water Sight Drain Glass Clamp Screw
EC1300	Dowel Pin
AEC1302-2-DS	Pot Sub-Assembly (See Assembly, page 15)
EC1305	Mold Housing
EC1306	Mold Housing Side Plate
EC1309	Pot Stud (Left)
EC1310	Pot Stud (Right)
EC1311	Pot Well Screw
EC1313	Pot Stud Nut
EC1315C	Plunger Lever
EC1316A	Plunger Rod Clevis
EC1317A	Plunger Connecting Rod
EC1318B	Plunger Rod Pin
AEC1319A	Plunger Rod Clevis Pin Assembly
EC1320	Plunger Lever Pin
EC1320½	Plunger Rod Pin Retainer
EC1321	Plunger Pin
EC1322	Plunger Lever Bracket Pin Set Screw
EC1322½	Plunger Rod Pin Retainer Washer
EC1323	Plunger Spring
EC1324	Plunger Spring Washer
EC1327B	Plunger
AEC1328A	Mold Cover Assembly
EC1329	Mold Housing Side Screw
EC1332	Plunger Lever Rod Plunger Rod Nut (use EC1113½)
EC1335	Pot Support (Front) Pot Support Dowel (use EC1005)
EC1335½A	Water Outlet Spout
EC1336	Pot Support (Rear)
AEC1337B	Metal Drip Cup Assembly
EC1340	Water Inlet Valve
EC1342½	Water Drain Cock Handle
EC1344A	Water Drain Cock
AEC1344A	Water Drain Cock Assembly (See Assembly, page 15)
EC1344½	Water Drain Cock Extension
EC1345½	Water Drain Cock Pin
EC1354	Nipple
EC1355A	Drain Pipe Outlet Bracket Drain Pipe Outlet Bracket Screw (use 915)
AEC1358A	Mold Cover Handle Assembly
EC1359	Drain Pipe Outlet Bracket Set Screw
AEC1375½	Water Drain Cup Assembly
EC1382	Fillister Head Machine Screw
EC1394½	Sealing Valve Handle
1614½	Set Screw
EC1648	Movable Knife Cover Screw

## METAL POT AND PRESSURE OILER PARTS (continued)

Part No.	Name of Part
EC1833A	Sight Hole Cover .....
EC1842	Drain Pipe Outlet .....
EC1880A	Diffusion Tube Adapter .....
EC1901	Pot Casing .....
EC1902A	Pot Casing Cover .....
EC1904A	Crucible Well .....
EC1905A	Sealing Valve Stem .....
EC1906A	Sealing Valve Guide & Stop Plate .....
EC1907	Pot Casing Cover Screw .....
EC1908	Diffusion Tube Adapter Guard .....
	Round Head Screw (use 1161)
EC1910	45 Degree Elbow—Plain .....
EC1911	Pipe Nipple .....
EC1913	Pipe Nipple .....
EC1914	Plunger Lever Bracket .....

*When ordering parts, always give serial number of the machine.*

## SLUG PULLER AND SAFETY SWITCH PARTS

Part No.	Name of Part
EC1401	Slug Puller Slide Support (Right) .....
EC1402	Slug Puller Slide Support (Left) .....
	Slug Puller Slide Support Set Screw (use EC1137)
	Slug Puller Slide Support Screw (use 42)
	Slug Puller Slide Support Dowel (use EC1005)
EC1403A	Slug Puller Slide .....
EC1404	Slug Puller Wedge Gib .....
EC1405B	Slug Puller Release Slide Plate .....
EC1406	Slug Puller Wedge Gib Screw .....
EC1407	Wedge Spring Plunger Post .....
	Wedge Spring Plunger Post Nut (use EC1416)
EC1408	Wedge Spring Plunger .....
	Wedge Spring Plunger Cotter (use 68)
EC1409	Puller Wedge Spring .....
EC1410	Wedge Plunger Spring Collar .....
EC1412	Puller Slide Lever Link .....
EC1413	Puller Slide Lever Link Pin .....
	Puller Slide Lever Link Pin Cotter (use 68)
EC1415A	Puller Slide Lever .....
EC1416	Wedge Spring Plunger Post Nut .....
EC1417A	Puller Slide Cam Roll Pin .....
EC1419	Slug Puller Slide Rod .....
EC1421A	Safety Switch Bracket .....
EC1422	Feed Adjusting Screw .....
EC1423	Feed Adjusting Screw Nut .....
EC1438	Cutter Head Spring .....
EC1439	Safety Switch Guard Screw .....
AEC1440A	Puller Wedge Sub-Assembly (See Assembly, page 15)
EC1440A	Slug Puller Wedge .....
EC1441	Slug Puller Wedge Ball .....
EC1442	Slug Puller Wedge Handle Stud .....
AEC1443	Puller Wedge Handle Assembly .....
EC1444	Puller Wedge Handle .....
EC1446	Puller Wedge Ball Retainer .....
EC1447	Puller Wedge Stop Pin .....
AEC1447½	Puller Wedge Shim Assembly (12 point) (See Assembly, page 16)
AEC1448	Puller Wedge Shim Assembly (12 point) (See Assembly, page 16)
AEC1448½	Puller Wedge Shim Assembly (6 point) (See Assembly, page 16)
EC1449	Shim Dowel (Left Hand) (12 point) .....
EC1449½	Shim Dowel (Left Hand) (6 point) .....
EC1454	Shim Dowel (Right Hand) (12 point) .....
EC1454½	Shim Dowel (Right Hand) (6 point) .....
EC1488½	Fillister Head Cap Screw .....

## MATERIAL CLAMP AND CUT-OFF LEVER PARTS

Part No.	Name of Part
EC1219	Slug Spring Guide Plate Screw .....
EC1322	Set Screw .....
EC1501	Material Clamp Bracket .....
	Material Clamp Bracket Screw (use 42)
	Material Clamp Bracket Dowel (use EC1005)
EC1502B	Material Clamp Yoke .....
EC1503	Material Clamp Yoke Stud .....
	Material Clamp Yoke Stud Nut (use EC1416)
EC1504	Material Clamp Spring .....
EC1505	Material Clamp Spring Plate .....
EC1507	Material Clamp Yoke Pin .....
	Material Clamp Yoke Pin Cotter (use 68)
EC1508A	Material Clamp Lever .....
	Cut-Off Lever Bracket .....
	Cut-Off Lever Bracket Screw (use 915)
	Cut-Off Lever Bracket Dowel (use EC1005)
EC1509	Material Clamp Lever Bracket .....
	Material Clamp Lever Bracket Screw (use 915)
	Material Clamp Lever Bracket Dowel (use EC1005)
	Fulcrum Pin for Cut-Off Lever .....
	Cut-Off Lever Fulcrum Pin Set Screw (use EC1115)
EC1510	Fulcrum Pin for Material Clamp Lever .....
	Material Clamp Lever Fulcrum Pin Set Screw (use EC1115)
EC1511	Slug Spring Guide Plate Fulcrum Pin .....
EC1512A	Material Clamp Cam Roll Stud .....
	Material Clamp Cam Roll Stud Nut (use 59)
EC1514	Slug Guide Spring .....
EC1515A	Slug Spring Guide Post .....
EC1516	Slug Spring Guide Post Stud .....
EC1517	Slug Spring Guide Fulcrum Screw .....
EC1518C	Slug Spring Guide Plate .....
	Slug Spring Guide Plate Fulcrum Pin (use 528)
	Slug Spring Guide Plate Fulcrum Pin Cotter Pin (use EC1511)
AEC1522D	Cut-Off Lever Assembly (See Assembly, page 16)
EC1522D	Cut-Off Lever .....
EC1523B	Cut-Off Lever Shoe .....
EC1529	Cut-Off Lever Spring .....
	Cut-Off Lever Spring Screw (use 40)
EC1532	Slug Guide Roll .....
EC1533	Slug Guide Roll Stud .....
EC1534	Slug Guide Clamp Nut .....
EC1535	Slug Guide Roll Stud Washer .....
EC1536A	Twin Lead Separator .....
EC1613A	Cutter Head Slug Guide .....
AEC1615A	Cutter Head Assembly (See Assembly, page 16) .....

*When ordering parts, always give serial number of the machine.*

## MATERIAL CLAMP AND CUT-OFF LEVER PARTS (continued)

Part No.	Name of Part
EC1615A	Cutter Head .....
EC1616	Stationary Knife .....
EC1617	Movable Knife .....
EC1618B	Movable Knife Cover .....
EC1620A	Knife Spring .....
EC1621	Movable Knife Spring Pin .....
EC1622	Slug Stripper Plate .....
EC1623	Slug Stripper Post .....
EC1624A	Slug Stripper Post Clamp Screw .....
EC1625	Slug Stripper Catch .....
EC1626	Stripper Catch Fulcrum Screw .....
EC1627	Cutter Head Guide Rod .....
AEC1628C	Material Cut Off Operating Rod .....
EC1628	Cut-Off Operating Rod .....
EC1648	Movable Knife Cover Screw .....
EC1652	Slug Stripper Post Stud .....
EC1653	Cutter Head Pin .....



## MATERIAL TABLE PARTS

Part No.	Name of Part
EC1601	Material Table Bracket Material Table Bracket Screw (use 42) Material Table Bracket Dowel (use EC1005)
EC1602A	Material Table
EC1603	Material Table End Bracket Material Table End Bracket Screw (use EC1611) Material Table End Bracket Dowel (use EC1612)
EC1604A	Material Guide Plate
EC1605A	Guide Plate Adjusting Screw
EC1606	Guide Plate Binder Screw
EC1607	Stacker Lever
EC1608	Stacker Roll
EC1609	Stacker Roll Stud
EC1610	Stacker Spring Stacker Spring Screw (use EC1219)
EC1611	Material Table End Bracket Screw
EC1612	Material Table End Bracket Dowel
EC1614A	Cutter Head Bracket
EC1629	Cut-Off Operating Rod Spring Collar Cut-Off Operating Rod Spring Collar Screw (use EC1439)
EC1630	Guide Rod Spring
EC1631	Cut-Off Gauge Block
EC1632	Gauge Block Set Screw
EC1633	Stop Plate Adjusting Screw
EC1634	Stop Plate Binder Nut
EC1635	Stop Plate Adjusting Screw Spring
EC1636	Slug End Guide
EC1637	Stop Plate
EC1638	Stop Plate Guide Rod
EC1639	Stop Plate Lock Nut
EC1640	Material Table Brace Material Table Brace Screw (use EC1645)
AEC1641	Motor Assembly Motor Screw (M210)
EC1642A	Motor Pulley Motor Pulley Set Screw (use 1614½)
EC1644	Stacker Lever Pawl Stacker Lever Pawl Screw (use EC1133)
EC1645	Material Table Brace Screw
EC1646	Stacker Lever Fulcrum Pin
EC1647	Stacker Lever Friction Spring
EC1649	Belt
M210	Motor Screw
584	Motor Screw Washer
EC1652	Slug Stripper Post Stud
AEC1655A	Mold Remover Assembly

*When ordering parts, always give serial number of the machine.*

## AUXILIARY ELROD EQUIPMENT AND SUPPLIES

Part No.	Name of Part
AEC1019	Mold Sealing Plate Assembly .....
AEC1250A-1	Special Elrod Oil (gallon can) .....
AEC1250A-5	Special Elrod Oil (5-gallon can) .....
AEC1326	Lee Pot Well Scraper .....
AEC1328A	Mold Cover Assembly .....
AEC1337B	Metal Drip Cup Assembly .....
AEC1340½B	18-Pt. Mold Reamer } .....
EC1348½B	18-Pt. Mold Reamer Handle } .....
EC1357	Metal Drip Pot Handle .....
EC1361	Mold Cover Slide .....
AEC1655A	Mold Remover Assembly .....

**MISCELLANEOUS  
AUXILIARY ELROD EQUIPMENT, and  
SCREWS, NUTS, WASHERS, PINS, FITTINGS, ETC.**

Part No.	Name of Part	Specifications
15A	Oiler	$\frac{5}{16}$ "—32
40	Hexagon Head Cap Screw	$\frac{5}{16}$ "—18 x 1" long
42	Hexagon Head Cap Screw	$\frac{1}{2}$ "—13 x 1" long
59	Hexagon Nut	$\frac{1}{2}$ " x 13
68	Cotter Pin (Per Dozen)	$\frac{3}{32}$ " x $\frac{3}{4}$ " long
111A	Motor Switch	
122	Headless Set Screw	$\frac{5}{16}$ "—18 x $\frac{3}{8}$ " long
123½	Motor Wire Unilet Gasket	
124½	Motor Wire Unilet Cover	
128	B. X. Standard Box Connector	
M185	Round Head Screw	$\frac{1}{4}$ "—20 x $\frac{3}{8}$ " long
M210	Hexagon Head Cap Screw	$\frac{5}{16}$ " x 18" x $\frac{3}{4}$ " long
210E	Round Head Screw	$\frac{1}{4}$ "—20 x 1" long
M216	Washer	
229	Adjusting Screw	
230	Hexagon Check Nut	$\frac{1}{4}$ "—20 x $\frac{1}{8}$ " long
282	Stud	$\frac{3}{8}$ " Rd. x $\frac{3}{8}$ " long
309E	90° Angle Box Connector	
310	$\frac{1}{8}$ " Pipe Railroad Union	
327	$\frac{1}{8}$ " Close Nipple	
332	Burner Valve Nipple	$\frac{3}{8}$ " Nipple 3" long
336	$\frac{1}{8}$ " Pipe Tee	
337	$\frac{1}{8}$ " Pipe Elbow	
338	Pipe Nipple	$\frac{1}{8}$ " x 3" long
342	$\frac{1}{8}$ " Street Elbow	
381	Nipple	$\frac{1}{8}$ " x 2¼" long
451	Flat Head Screw	$\frac{1}{4}$ "—20 x $\frac{1}{2}$ " long
512	Dowel Pin	$\frac{3}{16}$ " x $\frac{3}{8}$ " long
517	Dowel Pin	$\frac{1}{8}$ " x $\frac{9}{16}$ " long
528	Cotter Pin	
562	Check Nut	$\frac{5}{16}$ "—18 x $\frac{3}{16}$ " thick
570	Fillister Head Screw	No. 8—36 x $\frac{3}{8}$ " long
584	Washer	$\frac{5}{16}$ " x $\frac{1}{16}$ " thick
615½	Lock Washer	$\frac{3}{8}$ " x $\frac{1}{8}$ " x $\frac{3}{32}$ " plain
676½	Dowel Pin	$\frac{1}{8}$ " x $\frac{3}{8}$ " long
738	No. 2 Taper Pin	$\frac{1}{8}$ " long
754	Dowel Pin	$\frac{3}{16}$ " x $\frac{7}{16}$ " long
815	Dowel Pin	$\frac{5}{16}$ " x $2\frac{1}{64}$ " long
915	Hexagon Head Cap Screw	$\frac{3}{8}$ "—16 x 1" long
918	Shoulder Stud	$\frac{3}{8}$ " Rd. x $1\frac{1}{16}$ " long
EC1110½	Steel Ball	
EC1113½	Hex Nut	$\frac{3}{8}$ "—11 x $\frac{3}{8}$ " thick
EC1452A	Safety Switch Insulator Bushing	$\frac{1}{8}$ " Rd. x $\frac{3}{8}$ " long
EC1627½	Check Nut	No. 10—32 x $\frac{1}{8}$ "

*When ordering parts, always give serial number of the machine.*

## ASSEMBLIES

Assembly No.	Name of Part
AEC1019	Mold Sealing Plate Assembly, consisting of:..... 1 AEC1358A Mold Cover Handle Assembly 1 EC1019 Mold Sealing Plate 1 741 Lock Washer
AEC1201	Cam Shaft Assembly, consisting of:..... 1 EC1201 Cam Shaft 1 EC1203 Cam Shaft Collar 1 EC1204 Material Clamp Cam 1 EC1205 Plunger Cam 2 EC1206A Puller Slide Cam (right & left) 6 EC1211 Material Clamp Cam Pin 1 EC1217 Cut-Off Cam
AEC1260	Pressure Oiler Assembly, complete, consisting of:..... 1 EC1243 Fillister Head Cap Screw 1 EC1258 Pressure Oiler Oil Cup 1 EC1259 Pressure Oiler Shut-Off Valve 2 EC1260½ 5/16" Lock Washer 1 AEC1260-1 Pressure Oiler Body Sub-Assembly (see page 15) 1 EC1262A Pressure Oiler Bracket 2 EC1262½ ⅜"—16 Hexagon Head Cap Screw 1 EC1264A Pressure Oiler Cover 2 EC1265 Pressure Oiler Mounting Bushing (when Margach Feeder is not used) 1 EC1266½ Long Nipple ⅜" x 7" 2 EC1267 Pressure Oiler Piston Stop Stud 1 EC1268½ Pressure Oiler Piston Seal 1 AEC1268 Pressure Oiler Piston Assembly (see page 15) 2 EC1269 Shoulder Screw for Pressure Oiler Piston 1 EC1270 Pressure Oiler Piston Packing 1 EC1271 Pressure Oiler Piston Packing Retainer 1 EC1272 Pressure Oiler Piston Roller 1 EC1273 Pressure Oiler Weight Link Lock Washer 1 EC1274 Pressure Oiler Adjusting Lever Link 2 EC1275 Shoulder Screw 1 EC1276 Pressure Oiler Weight Link 2 EC1276½ Shoulder Screw 1 EC1277A Pressure Oiler Adjusting Lever 1 EC1278A Pressure Oiler Weight 1 EC1278½ Pressure Oiler Feed Line Close Nipple 1 AEC1279½ Pressure Oiler Feed Line Tube Assembly 2 EC1280 Pressure Oiler Feed Line Tubing Union 3 EC1382 Fillister Head Machine Screw 4 230 Hexagon Check-Nut ¼"—20 x ⅜" long 1 336 ⅜" Pipe Tee 1 337 ⅜" Pipe Elbow 3 342 ⅜" Street Elbow

### ASSEMBLIES (continued)

Assembly No.	Name of Part
	2 615½ Lock Washer
	2 AEC1281B Pressure Oiler Diffusion Tube Assembly (Listed Below)
AEC1260-1	1 AEC1250A-1 Special Elrod Mold Oil (1-gallon can) Pressure Oiler Body Sub-Assembly, consisting of: . . . . .
	1 EC1260 Pressure Oiler Body
	1 EC1261 Pressure Oiler Piston Sleeve
	1 EC1263 Pressure Oiler Piston Sleeve Plug
AEC1268	Pressure Oiler Piston Assembly, consisting of: . . . . .
	1 EC1266A Pressure Oiler Piston Stop
	1 EC1268 Pressure Oiler Piston
	1 738 No. 2 Taper Pin 1¼" long
AEC1281B	Pressure Oiler Diffusion Tube Assembly, consisting of: . . .
	1 EC1281B Pressure Oiler Diffusion Tube Body (not sold separately)
	EC1281½ Diffusion Tube Packing (use 1 Capsule for each packing)
	1 EC1282 Packing Retainer
	1 EC1282½A Packing Retainer Screw (bottom)
AEC1294	Water Sight Drain Glass Assembly, consisting of: . . . . .
	1 EC1294 Water Sight Drain Glass
	1 EC1295 Water Sight Drain Glass Flange (top)
	1 EC1296A Water Sight Drain Glass Flange (bottom)
	2 EC1297 Water Sight Drain Glass Gasket
	3 EC1298 Water Sight Drain Glass Clamp Screw
AEC1302-2-DS	Crucible Sub-Assembly (for replacement only), consisting of: . . . . .
	1 AEC1302-1-DS Pot Sub-Assembly
	2 EC1309 Pot Stud (left)
	2 EC1310 Pot Stud (right)
	2 EC1311 Pot Well Screw
	1 EC1317A Plunger Connecting Rod
	1 EC1321 Plunger Pin
	1 EC1327B Plunger
	1 EC1880A Diffusion Tube Adapter
	1 EC1904A Crucible Well
	1 EC1905A Sealing Valve Stem
	1 EC1913 Pipe Nipple
	1 327 Close Nipple
	1 517 Dowel Pin
AEC1344A	Water Drain Cock Assembly, consisting of: . . . . .
	1 EC1342½ Water Drain Cock Handle
	1 EC1344A Water Drain Cock
	1 EC1344½ Water Drain Cock Extension
	2 EC1345½ Water Drain Cock Pin
AEC1440A	Puller Wedge Sub-Assembly, consisting of: . . . . .
	1 AEC1443 Puller Wedge Handle Assembly

*When ordering parts, always give serial number of the machine.*

### ASSEMBLIES (continued)

Assembly No.	Name of Part
	1 EC1440A Slug Puller Wedge
	8 EC1441 Slug Puller Wedge Ball
	1 EC1442 Slug Puller Wedge Handle Stud
	1 EC1446 Puller Wedge Ball Retainer
	1 EC1447 Puller Wedge Stop Pin
AEC1447½	Puller Wedge Shim Assembly (2 point) consisting of: . . . . .
	1 EC1447½ Puller Wedge Stop Pin
	1 EC1449 Shim Dowel (left hand)
	1 EC1454½ Shim Dowel (right hand)
AEC1448	Puller Wedge Shim Assembly (12-point), consisting of: . . . . .
	1 EC1448 Puller Wedge Shim (not sold separately)
	1 EC1449 Shim Dowel (left hand)
	1 EC1454A Shim Dowel (right hand)
AEC1448½	Puller Wedge Shim Assembly (6-point), consisting of: . . . . .
	1 EC1448½ Puller Wedge Shim (not sold separately)
	1 EC1449½ Shim Dowel (left hand)
	1 EC1454½ Shim Dowel (right hand)
AEC1522D	Cut-Off Lever Assembly, consisting of: . . . . .
	1 EC1522D Cut-Off Lever
	1 EC1523B Cut-Off Lever Shoe
	2 570 Fillister Head Screw
AEC1615A	Cutter Head Assembly, consisting of: . . . . .
	2 EC1219 Slug Spring Guide Plate Screw
	1 EC1322 Set Screw
	1 EC1613A Cutter Head Slug Guide
	1 EC1615A Cutter Head
	1 EC1616 Stationary Knife
	1 EC1617 Movable Knife
	1 EC1618B Movable Knife Cover
	1 EC1620A Knife Spring
	1 EC1621 Movable Knife Spring Pin
	1 EC1622 Slug Stripper Plate
	1 EC1623 Slug Stripper Post
	1 EC1624A Slug Stripper Post Clamp Screw
	1 EC1625 Slug Stripper Catch
	1 EC1626 Stripper Catch Fulcrum Screw
	4 EC1648 Movable Knife Cover Screw
	1 EC1652 Slug Stripper Post Stud
	1 EC1653 Cutter Head Pin

## NUMERICAL INDEX

Part Number	Listed on Page	Part Number	Listed on Page
15A	13	EC1004	1
40	9-13	EC1005	1-2-6-8-9-11
42	1-2-8-9-11-13	EC1006C	1
59	4-9-13	EC1008	1-4
68	8-9-13	EC1009	1
111A	13	EC1010B	1
122	13	EC1013	1
123½	13	AEC1019	2-12-14
124½	13	EC1019	14
128	13	EC1024	1
M185	13	EC1104A	2
M210	11-13	EC1105A	2
M210E	13	EC1106	2
M216	13	EC1107	2
229	13	EC1108A	2
230	13-14	EC1109A	2
282	13	EC1110	2
299	2	EC1110½	13
309E	13	EC1111A	2
310	13	EC1112A	1
327	13-15	EC1113	2
332	13	EC1113½	2-6-13
336	13-14	EC1115	2-9
337	5-13-14	EC1116	1-2
338	13	EC1120	2
342	5-13-14	EC1121	2
381	13	AEC1122	2
451	13	EC1123	2
512	13	EC1124	2
517	13-15	EC1125	2
528	9-13	EC1127	2
562	13	EC1128	2
570	13-16	EC1129	2
584	11-13	EC1132A	2
615½	13-15	EC1133	2-4-11
676½	13	EC1134	2
738	13-15	EC1136	2
741	14	EC1137	2-8
754	13	EC1138	2
815	13	EC1141	2
915	2-6-9-13	EC1142	2
918	13	EC1143	2
EC1001	1	EC1145	2
AEC1002	1	AEC1147A	2
EC1003	1	EC1149	2

*When ordering parts, always give serial number of the machine.*

## NUMERICAL INDEX

Part Number	Listed on Page	Part Number	Listed on Page
EC1151	2	EC1273	5-14
EC1161	2-7	EC1274	5-14
EC1179	5	EC1275	5-14
EC1184	3	EC1276	5-14
AEC1201	4-14	EC1276½	5-14
EC1201	4-14	EC1277A	5-14
EC1203	4-14	EC1278A	5-14
EC1204	4-14	EC1278½	5-14
EC1205	4-14	AEC1279½	5-14
EC1206A	4-14	EC1280	5-14
EC1207A	4	AEC1281B	5-15
EC1208C	4	EC1281B	15
EC1209	4	AEC1281½	5-15
EC1210	4	EC1281½	15
EC1211	4-14	EC1282	5-15
EC1212A	4	EC1282½A	5-15
EC1216	4	AEC1294	5-15
EC1217	4-14	EC1294	5-15
EC1219	4-9-11-16	EC1295	5-15
EC1220	4	EC1296A	5-15
EC1243	5-14	EC1297	5-15
AEC1250A1	12-15	EC1298	6-15
AEC1250A5	12	EC1300	6
EC1258	5-14	AEC1302-1-DS	15
EC1259	5-14	AEC1302-2-DS	6-15
AEC1260	5-14	EC1305	6
AEC1260-1	14-15	EC1306	6
EC1260	5-15	EC1309	6-15
EC1260½	5-14	EC1310	6-15
EC1261	5-15	EC1311	6-15
EC1262A	5-14	EC1313	6
EC1262½	5-14	EC1315C	6
EC1263	5-15	EC1316A	6
EC1264A	5-14	EC1317A	6-15
EC1265	5-14	EC1318B	6
EC1266A	5-15	AEC1319A	6
EC1266½	5-14	EC1320	6
EC1267	5-14	EC1320½	6
AEC1268	5-14-15	EC1321	6-15
EC1268	5-15	EC1322	2-6-9-16
EC1268½	5-14	EC1322½	6
EC1269	5-14	EC1323	6
EC1270	5-14	EC1324	6
EC1271	5-14	AEC1326	12
EC1272	5-14	EC1327B	6-15



## NUMERICAL INDEX

Part Number	Listed on Page	Part Number	Listed on Page
AEC1328A	6-12	EC1438	8
EC1329	6	EC1439	8-11
EC1332	6	AEC1440A	8-15
EC1335	6	EC1440A	8-16
EC1335½A	6	EC1441	8-16
EC1336	6	EC1442	8-16
AEC1337B	6	AEC1443	8-15
EC1340	6	EC1444	8
AEC1340½B	12	EC1446	8-16
EC1342½	6-15	EC1447	8-16
AEC1344A	6-15	AEC1447½	8-16
EC1344A	6-15	EC1447½	16
EC-1344½	6-15	AEC1448	8-16
EC1345½	6-15	EC1448	16
EC1347	2	EC1448½	16
EC1348½B	12	AEC1448½	8-16
EC1354	6	EC1449	8-16
EC1355A	6	EC1449½	8-16
EC1357	12	EC1452A	13
AEC1358A	14	EC1454	8-16
EC1359	6	EC1454½	8-16
EC1361	12	EC1488½	8
AEC1375½	6	EC1501	9
EC1382	6-14	EC1502B	9
EC1394½	6	EC1503	9
EC1401EA	3	EC1504	9
EC1401	8	EC1505	9
EC1402	8	EC1507	9
EC1403A	8	EC1508A	9
EC1404	8	EC1509	9
EC1405B	8	EC1510	9
EC1406	8	EC1511	9
EC1407	8	EC1512A	4-9
EC1408	8	EC1514	9
EC1409	8	EC1515A	9
EC1410	8	EC1516	9
EC1412	8	EC1517	9
EC1413	8	EC1518C	9
EC1415A	8	AEC1522D	9-16
EC1416	8-9	EC1522D	9-16
EC1417A	8	EC1523B	9-16
EC1419	8	EC1529	9
EC1421A	8	EC1532	9
EC1422	8	EC1533	9
EC1423	8	EC1534	9

*When ordering parts, always give serial number of the machine.*

## NUMERICAL INDEX

Part Number	Listed on Page	Part Number	Listed on Page
EC1535	9	EC1634	11
EC1536A	9	EC1635	11
EC1601	11	EC1636	11
EC1602A	11	EC1637	11
EC1603	11	EC1638	11
EC1604A	11	EC1639	11
EC1605A	11	EC1640	11
EC1606	11	AEC1641	11
EC1607	11	EC1642A	11
EC1608	11	EC1644	11
EC1609	11	EC1645	11
EC1610	11	EC1646	11
EC1611	11	EC1647	11
EC1612	2-11	EC1648	6-10-16
EC1613A	9-16	EC1649	11
EC1614A	11	EC1652	10-11-16
EC1614½	6-11	EC1653	10-16
AEC1615A	9-16	AEC1655A	11-12
EC1615A	10-16	EC1833A	7
EC1616	10-16	EC1842	7
EC1617	10-16	EC1880A	7-15
EC1618B	10-16	EC1901	7
EC1620A	10-16	EC1902A	7
EC1621	10-16	AEC1903	1
EC1622	10-16	EC1904A	7-15
EC1623	10-16	EC1905A	7-15
EC1624A	10-16	EC1906A	7
EC1625	10-16	EC1907	7
EC1626	10-16	EC1908	7
EC1627	10	EC1910	7
EC1627½	13	EC1911	7
EC1628	10	EC1913	7-15
AEC1628C	10	EC1914	7
EC1629	11	EC1915	3
EC1630	11	EC1916	3
EC1631	11	EC1919	3
EC1632	11	EC1920	3
EC1633	11		

