

192,058

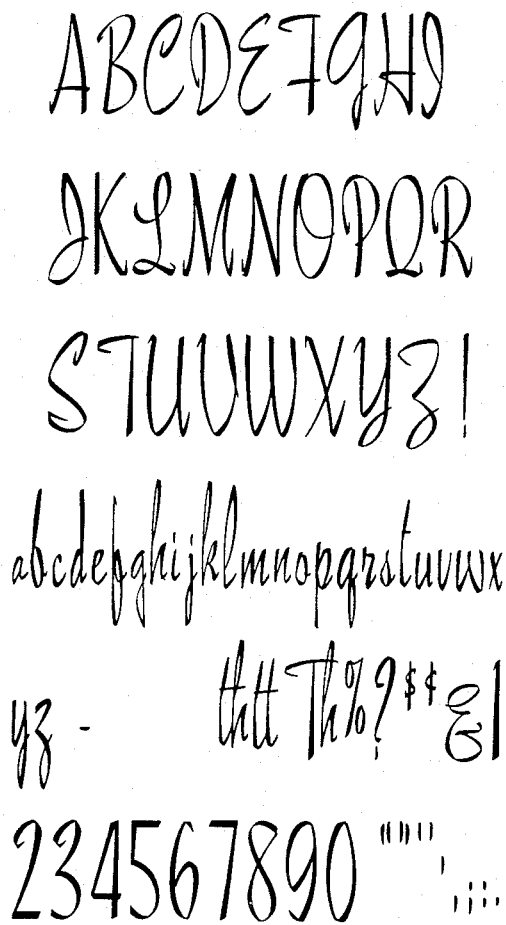
FONT OF PRINTING TYPE

Ray F. Morgan, Northfield, Ill., assignor to The Morgan  
Sign Machine Co., Chicago, Ill., a corporation of  
Illinois

Filed July 20, 1961, Ser. No. 65,996

Term of patent 14 years

(Cl. D64—12)



The figure on the drawing is a face view of a font of printing type showing my new design.

I claim:

The ornamental design for a font of printing type, as shown.

References Cited in the file of this patent

UNITED STATES PATENTS

D. 95,876	Trafton	June 4, 1935
D. 115,807	Gillies	July 18, 1939
D. 132,422	Smith	May 19, 1942
D. 177,690	Morgan	May 15, 1956
D. 179,774	Klumpp	Feb. 26, 1957
D. 186,741	Morgan	Nov. 24, 1959