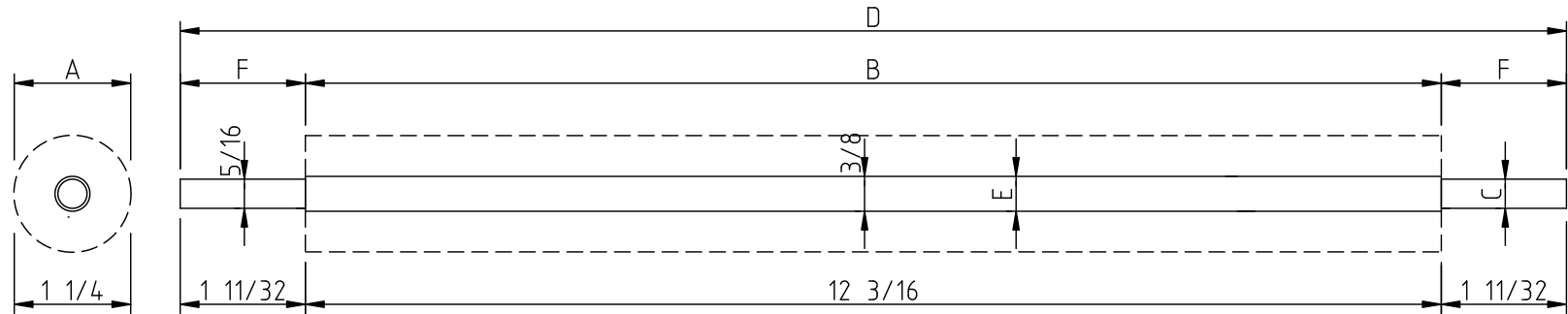
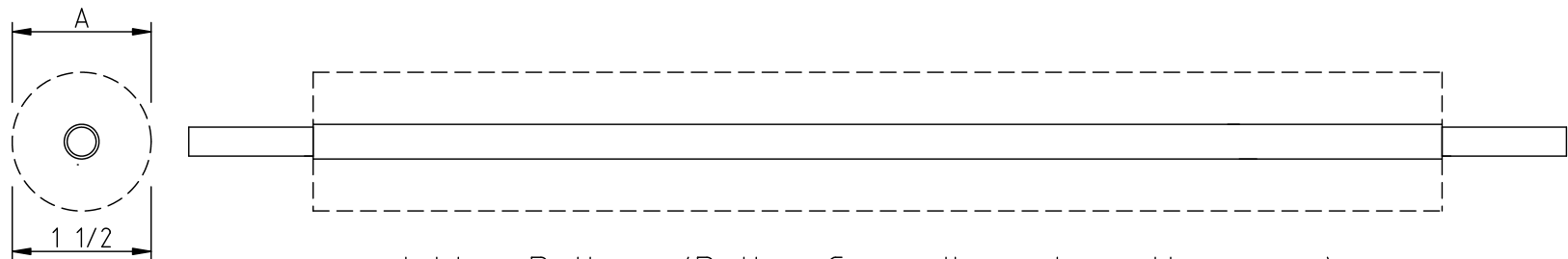


This is a new drawing made using data from an original Golding & Co. drawing/table.
Only information present in the original is presented here; nothing has been added.



Brayer Roller and Roller Core



Inking Rollers (Roller Core dimensions the same)

Notes:

1. The letters in the drawing are those of the original Golding drawing.
The dimensions are from the table accompanying the drawing.
2. The Golding drawings and tables are clear that Improved Pearl No. 11 O.S. roller equipment doesnot have a pin in the Roller Core.
3. As designed, the press used one Brayer Roller and two Inking Rollers.
4. The roller diameters are for composition rollers.
5. Dimensions in inches.

Data from Golding & Co. drawing/table "Cast Roller & Roller Core Data" (undated).
Thanks to Stephen O. Saxe for preserving this information and making it available.

CircuitousRoot
Mineral Point, Wisconsin

Original Roller & Core Data
Golding Pearl No. 11
With O.S. Roller Equipment
Golding Part No. 70

Redrawn by Dr. David M. MacMillan

Data public domain. Drawing Creative Commons By-SA-3.0

Proj. CR5-2 | Do Not Scale | Dwg CRD-5