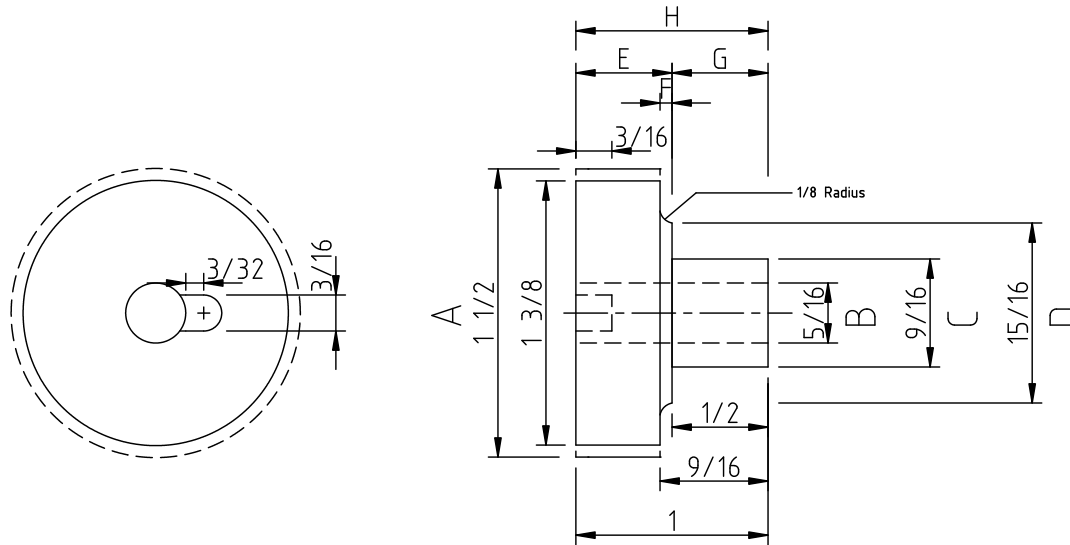


This is a modern compatible roller truck based on original Golding & Co. specifications.
It is not a representation of an authentic Golding Pearl roller truck.



Drill "B" undersize and ream 0.312,5

Relief at "D/F" may be omitted,
and diameter "A" turned to full
length of "E".

Alter dimension "A" as appropriate
for roller diameter.
For composition rollers, "A" should be
1/8 inch smaller than roller diameter.
Original nominal roller diameter was
1 1/2 inches and original truck dimension
"A" was specified at 1 3/8 inches.
For rubber rollers, make dimension "A"
the same as the roller diameter.

Decimal Tolerances:

A, B, C = +/- 0.000,5
D, E, G = +/- 0.01

Material Notes:

Large section (E) shown recessed on roller side in original drawing.
Material uncertain; probably steel (?)
Small section (G) probably press fit into E, probably steel.
Modern substitute: Solid polyoxymethylene homopolymer (e.g., Delrin®)

Most data from Golding & Co. "Form Roller Wheels" drawing of Oct. 1898, Rev. 3 of June 25, 1911.
Thanks to Stephen O. Saxe for preserving this drawing and making it available.

CircuitousRoot
Mineral Point, Wisconsin

Form Roller Wheel (Truck)
compatible with a
Golding Pearl No. 1

Drawn by Dr. David M. MacMillan

Data public domain. Drawing Creative Commons By-SA-3.0

Proj. CR5-1	Part 162	Dwg CRD-2
-------------	----------	-----------