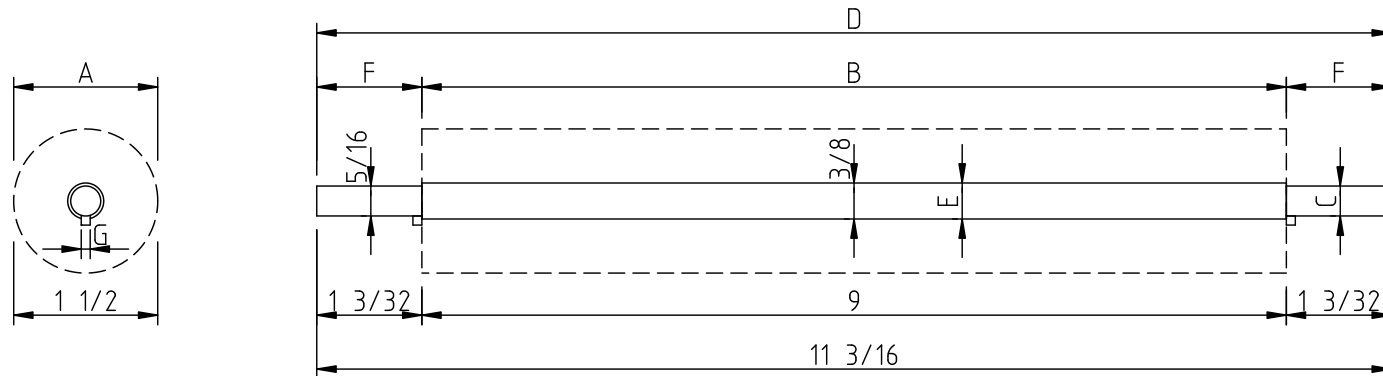


This is a new drawing made using data from an original Golding & Co. drawing/table.  
Only information present in the original is presented here; nothing has been added.



Notes:

1. The letters in the drawing are those of the original Golding drawing.  
The dimensions are from the table accompanying the drawing.
2. Pin  $G$  is dimensioned to "#10" in the original table,  
but the gauge system for this number is unspecified.  
The height of this pin is not specified.
3. The roller diameter is for composition rollers.
4. The original makes no mention of New Style / Improved vs. Old Style.

Data from Golding & Co. drawing/table "Cast Roller & Roller Core Data" (undated).  
Thanks to Stephen O. Saxe for preserving this information and making it available.

**CircuitousRoot**  
Mineral Point, Wisconsin

Original Roller & Core Data  
Golding Pearl No. 1

Golding Part No. 161

Redrawn by Dr. David M. MacMillan

Data public domain. Drawing Creative Commons By-SA-3.0

Proj. CR5-1	Do Not Scale	Dwg CRD-4
-------------	--------------	-----------