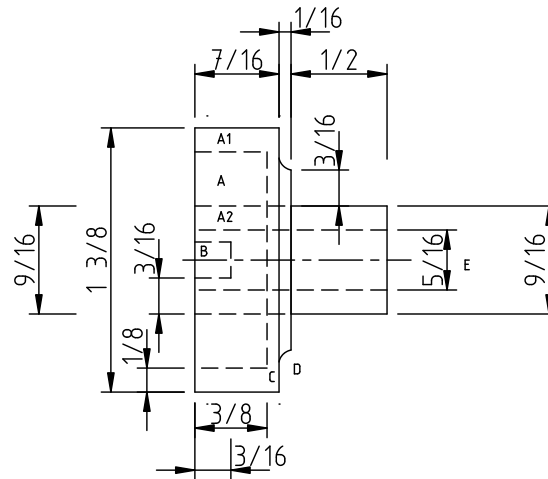


This is a re-drawn version of the original Golding drawing, with all of (and only) the information in the original shown. For a modern compatible truck design, see CircuitousRoot drawing CRD-2. For original roller & roller core data see CRD-4.



Notes:

- This represents an annular recess cut or cast into the roller side of the truck, leaving a full-width outer and inner rings at A1 and A2.
- This is a slot cut in the inner ring A2 for keying the truck to the roller.
- The original drawing does not appear to be to scale here, and shows the material remaining at the bottom of the annular relief as about  $\frac{1}{8}$ , although by the dimensions it must be  $\frac{1}{16}$ .
- The radius is not specified.
- The original drawing says " $\frac{5}{16}$  R", but the 'R' must be an error as the roller core end diameter is  $\frac{5}{16}$ .

The specified roller diameter is  $1 \frac{1}{2}$  inches, which is  $\frac{1}{8}$  inch more than the trucks. Four trucks are required for the press.

Data from Golding & Co. "Form Roller Wheels" drawing of Oct. 1898, Rev. 3 of June 25, 1911. Thanks to Stephen O. Saxe for preserving this drawing and making it available.

CircuitousRoot  
Mineral Point, Wisconsin

Original Form Roller Wheel Data  
Golding Pearl No. 1  
Golding Part No. 162

Redrawn by Dr. David M. MacMillan

Data public domain. Drawing Creative Commons By-SA-3.0

Proj. CR5-1 | Do Not Scale | Dwg CRD-3