

Point	Table II Image Positioning on Matrix		
	Body	Quad A (Headbearing)	Quad B (Footbearing)
12	.166"	.441"	.518"
14	.193"	.414"	.518"
18	.249"	.358"	.518"
24	.332"	.428"	.365"
30	.415"	.345"	.365"
36	.498"	.262"	.365"

* Figures and Tables taken from ATF Newsletter Nr. 27

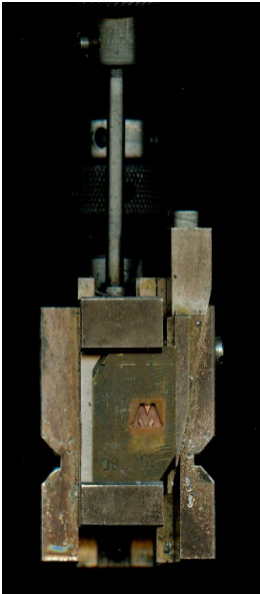


Illustration I

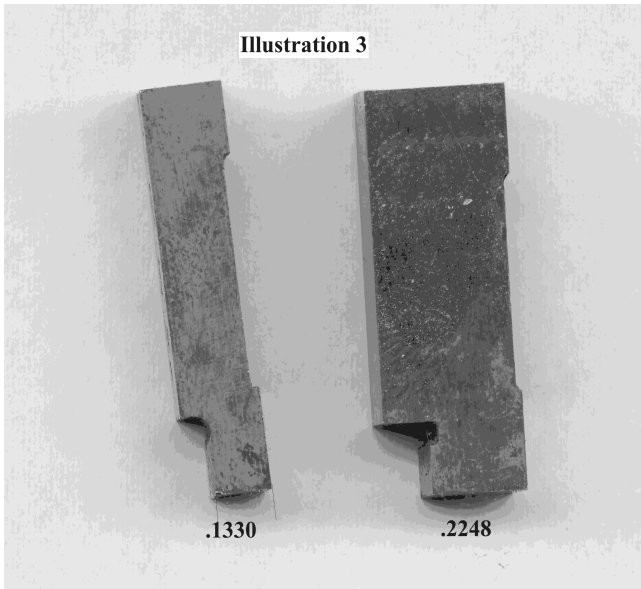
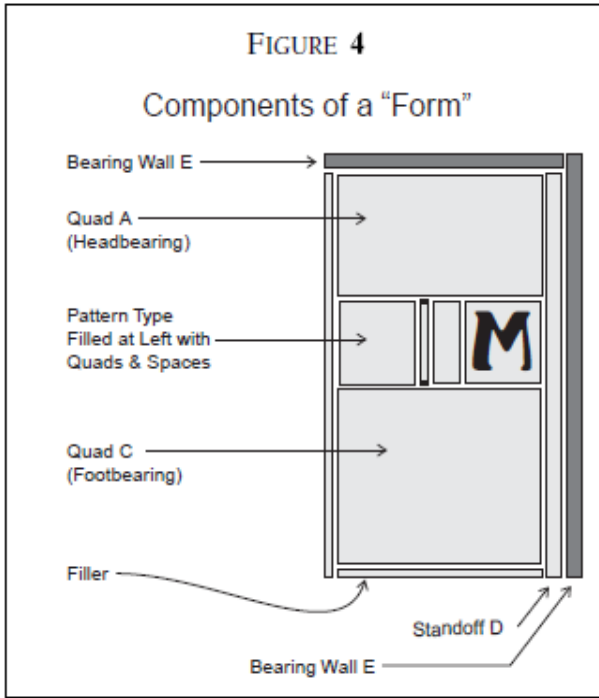


Illustration 3 - showing side views of 14 pt.
And 24 pt. Monotype Line Standard for 315
(Deepdene). 14 pt. on left.

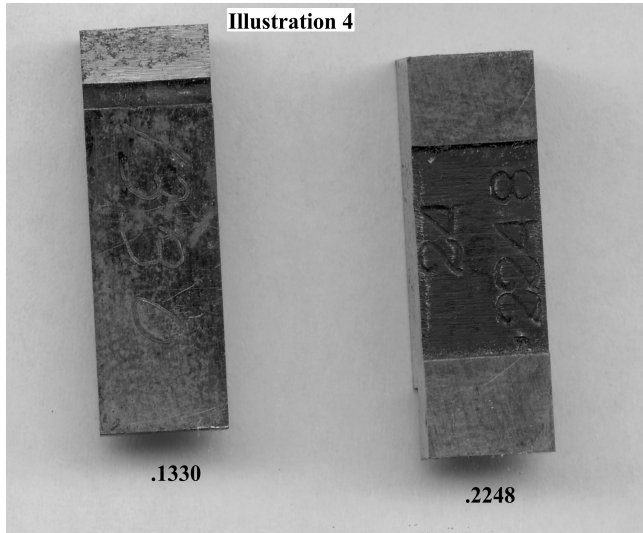


Illustration 4 - showing bottom views of 14 pt. and 24 pt. Line Standard for 315 (Deepdene) - 14 pt. on left.



Illustration 5 - English Monotype Mats are 1"x1" and use a cross, as shown for lines standard.