



TRADE **LINOTYPE** MARK

Garamond

Decorative Material

Designed by

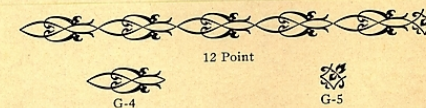
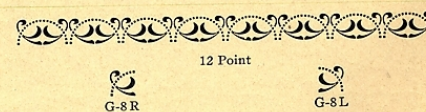
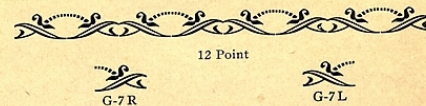
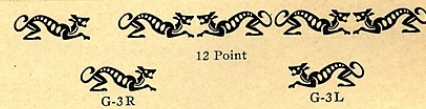
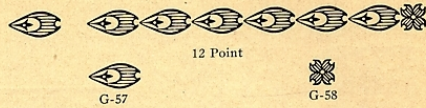
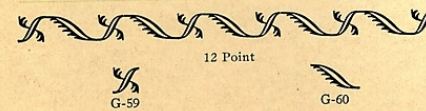
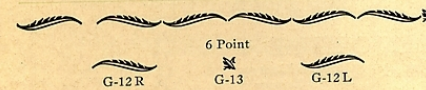
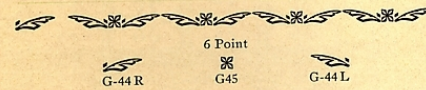
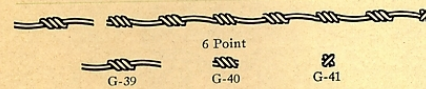
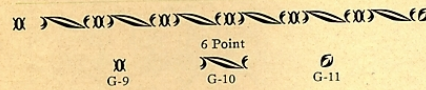
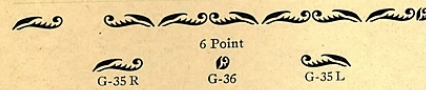
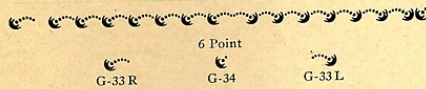
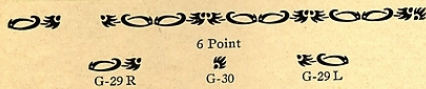
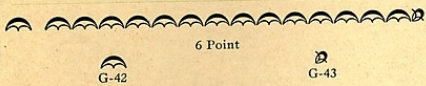
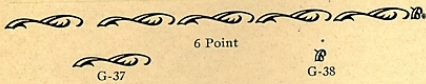
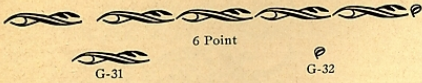
T. M. Cleland

MERGENTHALER LINOTYPE CO.

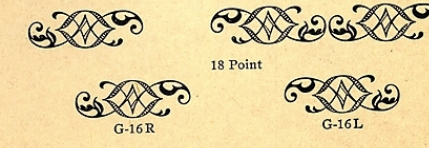
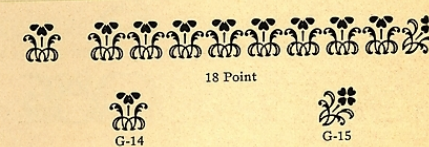
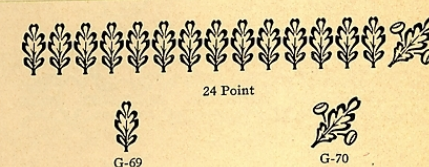
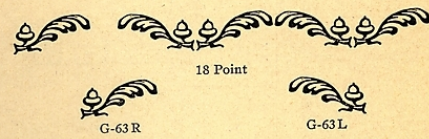
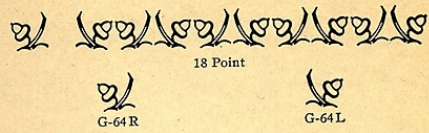
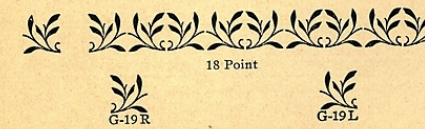
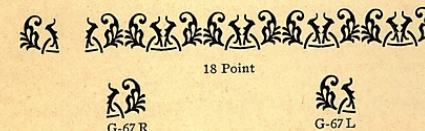
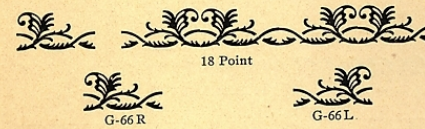
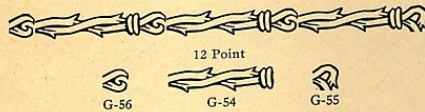
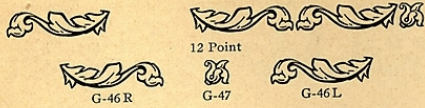
San Francisco Chicago Brooklyn, New York Canadian Linotype, Ltd.
New Orleans Toronto

Representatives in the Principal Cities of the World

Garamond Borders



Border Matrices TRADE MARK LINOTYPE MADE Shown in Families



Border Matrices TRADE MARK LINDTYPE MADE IN U.S.A. Shown in Families



18 Point



G-73



G-74



24 Point



G-73



G-74



24 Point



G-71



G-72



24 Point



G-20 R



G-20 L



24 Point



G-21 R



G-21 L



24 Point



G-22 R



G-22 L



36 Point



G-23 R



G-23 L



36 Point



G-24 R



G-24 L



36 Point

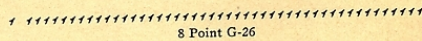


G-25 R

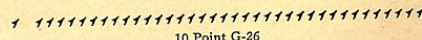


G-25 L

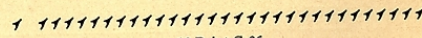
G-26, G-27 and G-28 were not designed by Mr. Cleland



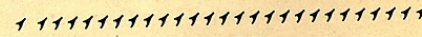
8 Point G-26



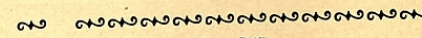
10 Point G-26



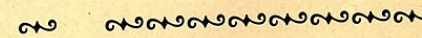
12 Point G-26



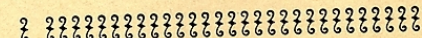
14 Point G-26



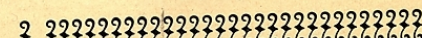
12 Point G-27



18 Point G-27



12 Point G-28



18 Point G-28



12 Point G-6 R, G-6 L, G-7 R, G-7 L, G-8 R, G-8 L

12 Point G-50 R, G-50 L, G-51 R, G-51 L

12 Point G-52 R, G-52 L, G-53

Garamond Borders
in Combination

12 Point G-8 R, G-8 L (Mitered Corners)

12 Point G-55, G-56

12 Point G-51 R, G-51 L

12 Point G-6 R, G-6 L (Mitered Corners)

TRADE **LINOTYPE** MARK

12 Point G-4, G-5

18 Point G-65 R, G-65 L, G-66 R, G-66 L, G-67 R, G-67 L

18 Point G-18, G-19 R, G-19 L

12 Point G-1 R, G-1 L, G-2

Garamond
Borders
in
Combination

6 Point G-42, G-43

12 Point G-59, G-60. 5 Point Matrix Slide 508

TRADE **LINOTYPE** MARK

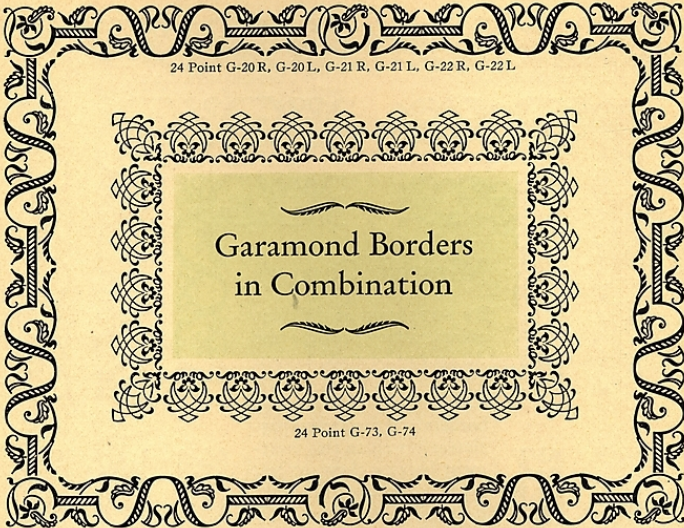
12 Point G-61 R, G-61 L, G-62

12 Point G-57, G-58

18 Point G-16 R, G-16 L, G-17 R, G-17 L



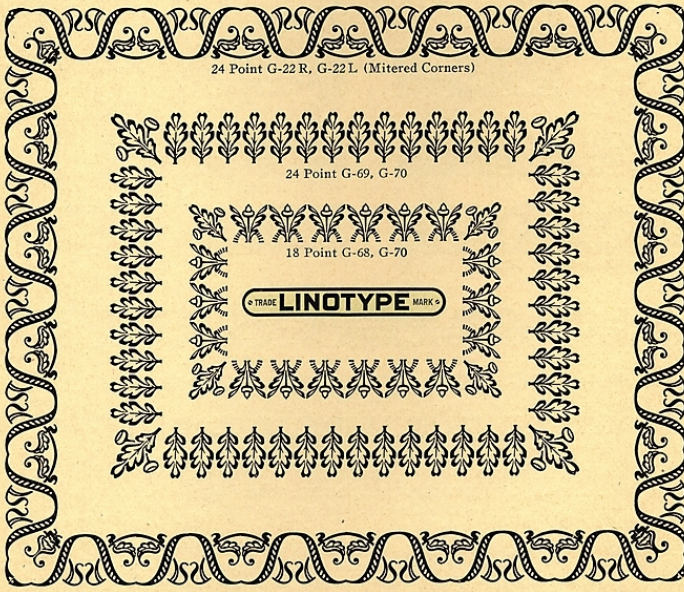
36 Point G-23 R, G-23 L



24 Point G-20 R, G-20 L, G-21 R, G-21 L, G-22 R, G-22 L

Garamond Borders
in Combination

24 Point G-73, G-74



24 Point G-22 R, G-22 L (Mitered Corners)

24 Point G-69, G-70

18 Point G-68, G-70

TRADE LINO TYPE MARK



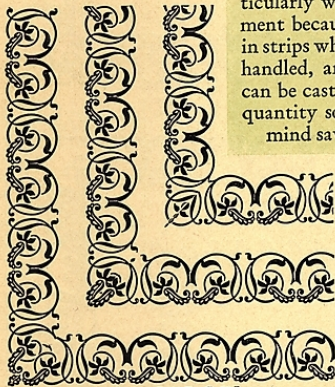
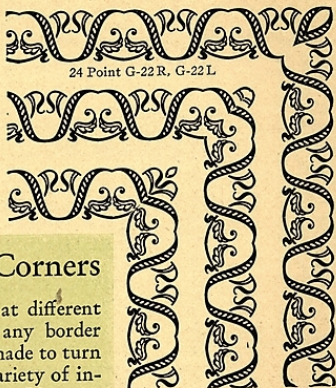
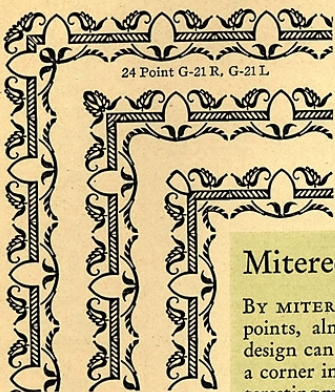
36 Point G-24R, G-24L

24 Point G-21R, G-21L

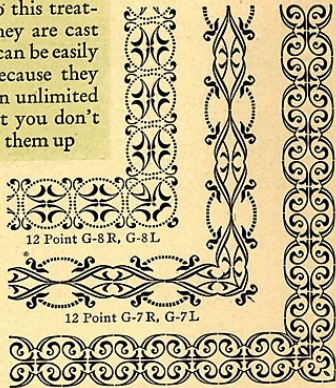
24 Point G-22R, G-22L

Mitered Corners

By MITERING at different points, almost any border design can be made to turn a corner in a variety of interesting manners. Linotype borders lend themselves particularly well to this treatment because they are cast in strips which can be easily handled, and because they can be cast up in unlimited quantity so that you don't mind sawing them up



24 Point G-20R, G-20L



12 Point G-8R, G-8L

12 Point G-7R, G-7L

12 Point G-6R, G-6L

MERGENTHALER LINOTYPE COMPANY

Brooklyn, New York

SAN FRANCISCO

CHICAGO

NEW ORLEANS

CANADIAN LINOTYPE, LIMITED, TORONTO

Representatives in the Principal Cities of the World

6 Point G-42

18 Point G-17R, G-17L