

BULLETIN NO. 50  
ISSUE 2  
JULY, 1936

# TELETYPESETTER

PARTS

KEYBOARD TAPE PERFORATOR

TELETYPESETTER

CORPORATION

1400 WRIGHTWOOD AVE.,  
CHICAGO, U. S. A.



BULLETIN NO. 50  
ISSUE 2  
JULY, 1936

# TELETYPESETTER

PARTS

KEYBOARD TAPE PERFORATOR

TELETYPESETTER

CORPORATION

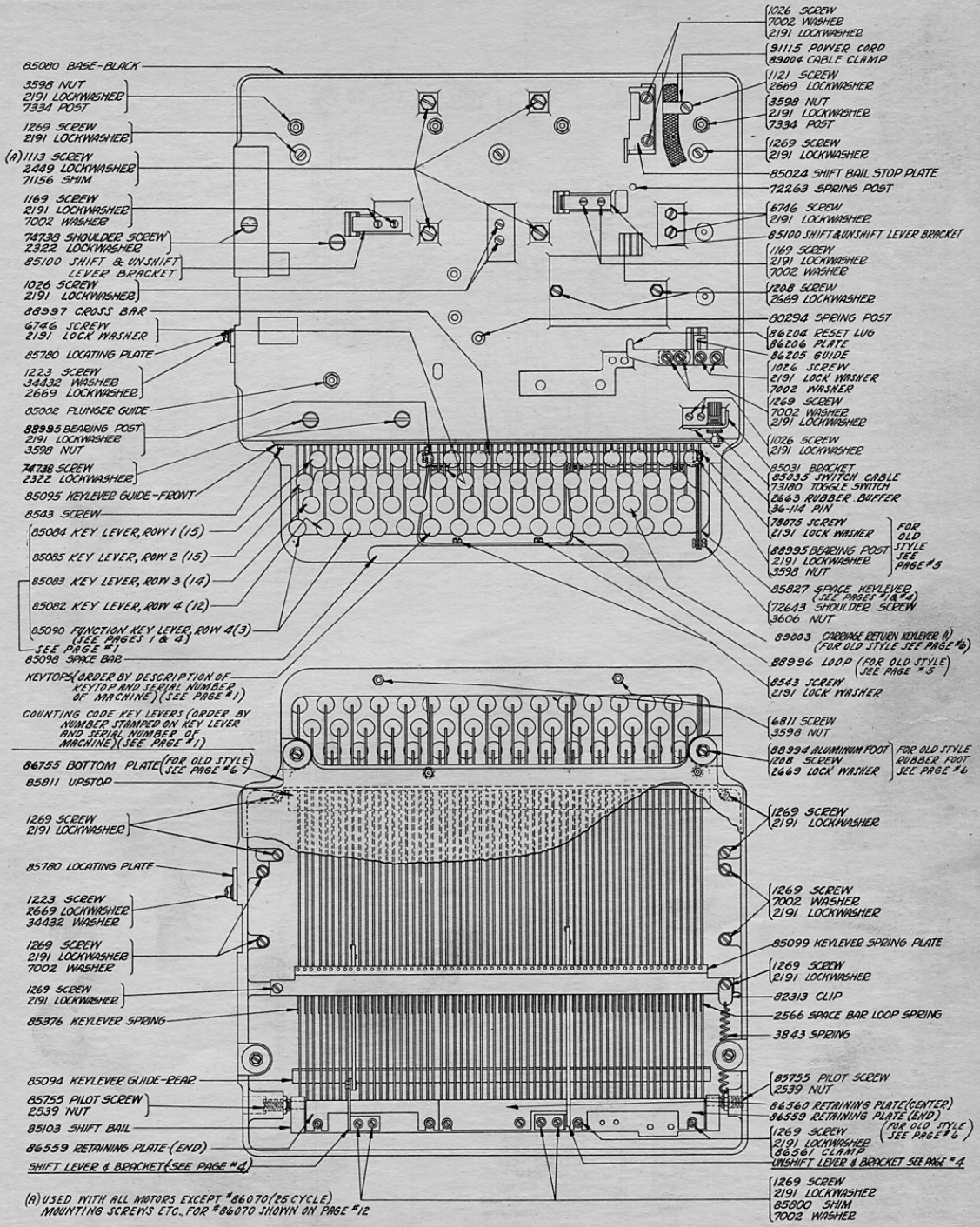
1400 WRIGHTWOOD AVE.,  
CHICAGO, U. S. A.



ALPHABETICAL INDEX

	Page
Base Assembly . . . . .	2
Clutch Shaft Unit . . . . .	3
Counting Code Levers . . . . .	1, 4
Counting Selector Bar Unit . . . . .	4
Counting Clutch Shaft . . . . .	3
Cover . . . . .	10
Keypop and Key Lever Arrangement . . . . .	1
Keypops and Key Levers . . . . .	1,2,4
Lamp and Socket . . . . .	5
Main Clutch Shaft . . . . .	3
Matrix Pointer and Scale Unit . . . . .	8
Main Clutch Stop Lever and Latches . . . . .	4
Motors and Motor Gears . . . . .	11, 12
Perforating Selector Bar Unit . . . . .	4
Pointer Drive Shaft and Gears . . . . .	5
Punch Unit . . . . .	9
Shift - Unshift Mechanism . . . . .	2, 4
Justification Pointers Unit . . . . .	7
Space Bar Assembly . . . . .	2
Tape Container . . . . .	10
Terminal Block Assembly . . . . .	5
Tools . . . . .	13
Worm Shaft . . . . .	3





- 85080 BASE-BLACK
- 3598 NUT
- 2191 LOCKWASHER
- 7334 POST
- 1269 SCREW
- 2191 LOCKWASHER
- (A) 1113 SCREW
- 2449 LOCKWASHER
- 71156 SHIM
- 1169 SCREW
- 2191 LOCKWASHER
- 7002 WASHER
- 74738 SHOULDER SCREW
- 2322 LOCKWASHER
- 85100 SHIFT & UNSHIFT LEVER BRACKET
- 1026 SCREW
- 2191 LOCKWASHER
- 88997 CROSS BAR
- 6746 SCREW
- 2191 LOCK WASHER
- 85780 LOCATING PLATE
- 1223 SCREW
- 34432 WASHER
- 2669 LOCKWASHER
- 85002 PLUNGER GUIDE
- 88995 BEARING POST
- 2191 LOCKWASHER
- 3598 NUT
- 74738 SCREW
- 2322 LOCKWASHER
- 85095 KEYLEVER GUIDE-FRONT
- 8543 SCREW
- 85084 KEY LEVER, ROW 1 (15)
- 85085 KEY LEVER, ROW 2 (15)
- 85083 KEY LEVER, ROW 3 (14)
- 85082 KEY LEVER, ROW 4 (12)
- 85090 FUNCTION KEY LEVER, ROW 4 (3)  
(SEE PAGES 1 & 4)  
SEE PAGE #1
- 85098 SPACE BAR

KEYTOPS (ORDER BY DESCRIPTION OF KEYTOP AND SERIAL NUMBER OF MACHINE) (SEE PAGE #1)

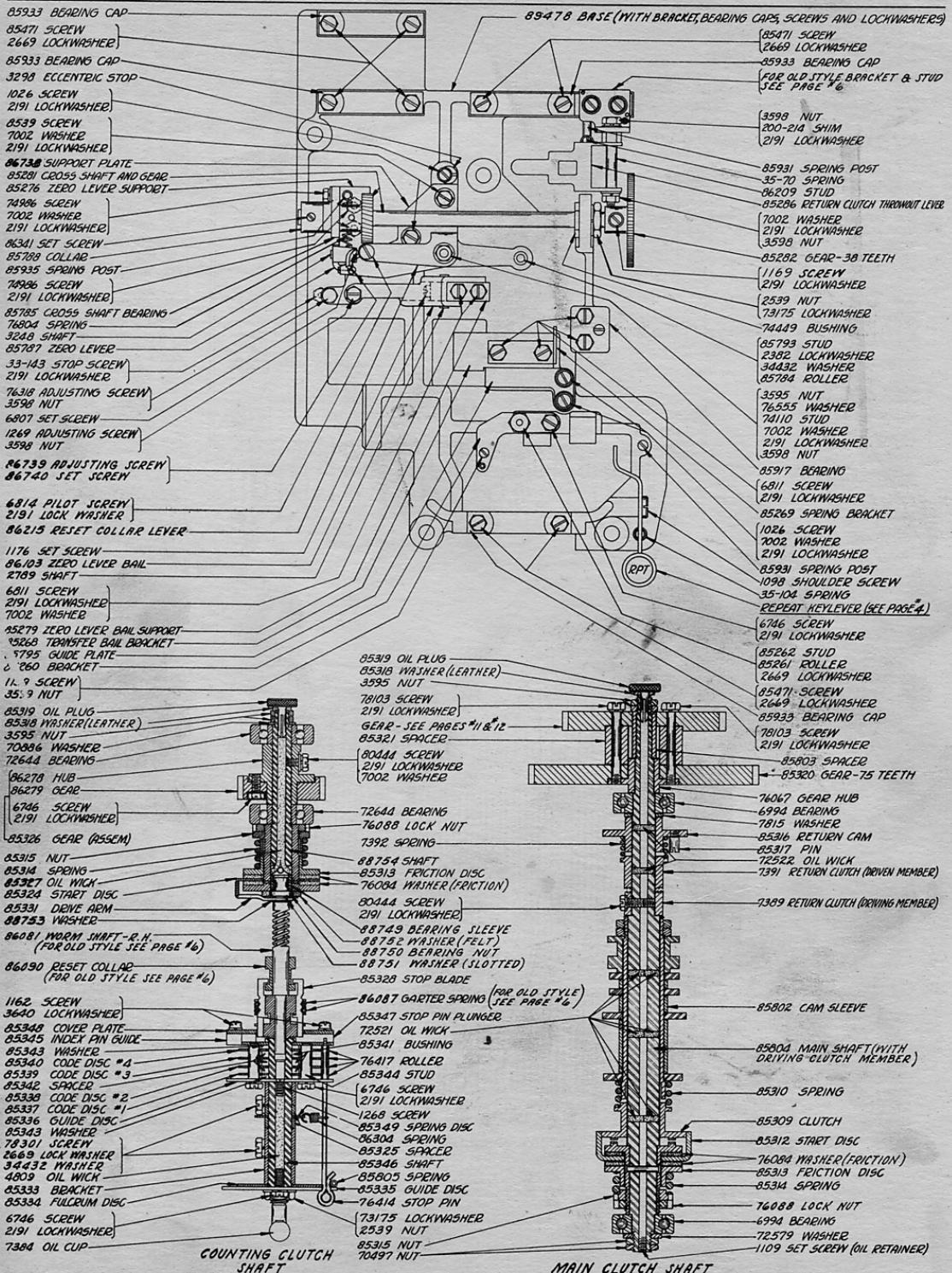
COUNTING CODE KEY LEVERS (ORDER BY NUMBER STAMPED ON KEY LEVER AND SERIAL NUMBER OF MACHINE) (SEE PAGE #1)

- 86755 BOTTOM PLATE (FOR OLD STYLE)  
(SEE PAGE #6)
- 85811 UPSTOP

- 1269 SCREW
- 2191 LOCKWASHER
- 85780 LOCATING PLATE
- 1223 SCREW
- 2669 LOCKWASHER
- 34432 WASHER
- 1269 SCREW
- 2191 LOCKWASHER
- 7002 WASHER
- 1269 SCREW
- 2191 LOCKWASHER
- 85376 KEYLEVER SPRING
- 85094 KEYLEVER GUIDE-REAR
- 85755 PILOT SCREW
- 2539 NUT
- 85103 SHIFT BAIL
- 86559 RETAINING PLATE (END)
- SHIFT LEVER 4 BRACKET (SEE PAGE #4)

(A) USED WITH ALL MOTORS EXCEPT #86070 (25 CYCLE) MOUNTING SCREWS ETC. FOR #86070 SHOWN ON PAGE #12

- 1026 SCREW
- 7002 WASHER
- 2191 LOCKWASHER
- 91115 PAPER CARD
- 85904 CABLE CLAMP
- 1121 SCREW
- 2669 LOCKWASHER
- 3598 NUT
- 2191 LOCKWASHER
- 7334 POST
- 1269 SCREW
- 2191 LOCKWASHER
- 85024 SHIFT BAIL STOP PLATE
- 72263 SPRING POST
- 6746 SCREW
- 2191 LOCKWASHER
- 85100 SHIFT & UNSHIFT LEVER BRACKET
- 1169 SCREW
- 2191 LOCKWASHER
- 7002 WASHER
- 1208 SCREW
- 2669 LOCKWASHER
- 80294 SPRING POST
- 86204 RESET LUG
- 86206 PLATE
- 86205 GUIDE
- 1026 SCREW
- 2191 LOCK WASHER
- 7002 WASHER
- 1269 SCREW
- 7002 WASHER
- 2191 LOCKWASHER
- 1026 SCREW
- 2191 LOCKWASHER
- 85031 BRACKET
- 85035 SWITCH CABLE
- 75180 TOGGLE SWITCH
- 2663 RUBBER BUFFER
- 36-114 PIN
- 78075 SCREW
- 2191 LOCK WASHER
- 88995 BEARING POST
- 2191 LOCKWASHER
- 3598 NUT
- 85827 SPACE KEYLEVER  
(SEE PAGE 1 & 4)
- 72643 SHOULDER SCREW
- 3606 NUT
- 89003 CARBASE RETURN KEYLEVER (I)  
(FOR OLD STYLE SEE PAGE #6)
- 88996 LOOP (FOR OLD STYLE)  
(SEE PAGE #5)
- 8543 SCREW
- 2191 LOCK WASHER
- 6811 SCREW
- 3598 NUT
- 88994 ALUMINUM FOOT (FOR OLD STYLE)  
RUBBER FOOT (SEE PAGE #6)
- 1269 SCREW
- 2191 LOCKWASHER
- 1269 SCREW
- 7002 WASHER
- 2191 LOCKWASHER
- 85099 KEYLEVER SPRING PLATE
- 1269 SCREW
- 2191 LOCKWASHER
- 82313 CLIP
- 2566 SPACE BAR LOOP SPRING
- 3843 SPRING
- 85755 PILOT SCREW
- 2539 NUT
- 86560 RETAINING PLATE (CENTER)
- 86559 RETAINING PLATE (END)  
(FOR OLD STYLE)  
(SEE PAGE #6)
- 1269 SCREW
- 2191 LOCKWASHER
- 86561 CLAMP
- UNSHIFT LEVER 4 BRACKET SEE PAGE #4
- 1269 SCREW
- 2191 LOCKWASHER
- 85800 SHIM
- 7002 WASHER



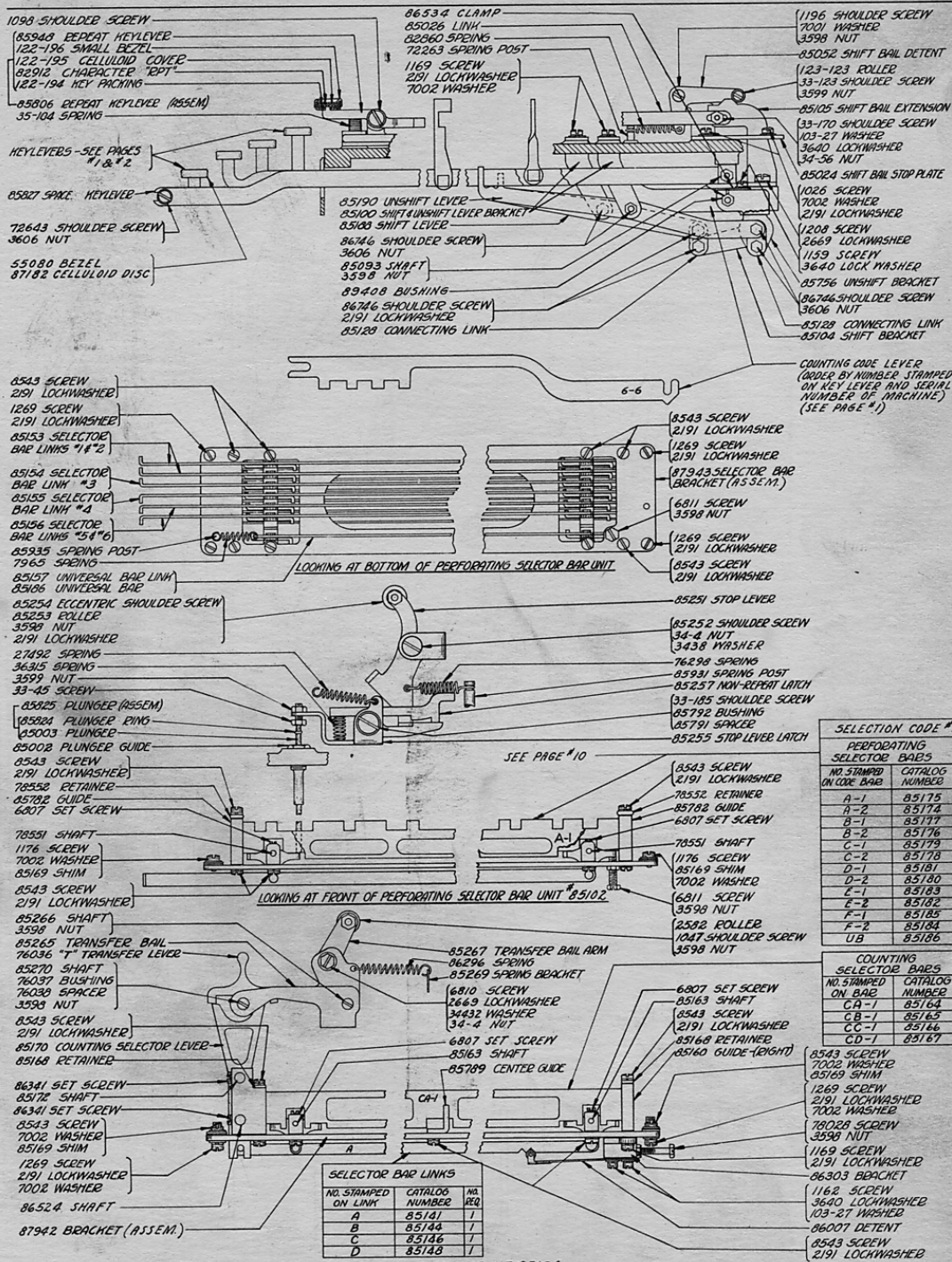
- 85933 BEARING CAP
- 85471 SCREW
- 2669 LOCKWASHER
- 85933 BEARING CAP
- 3298 ECCENTRIC STOP
- 1026 SCREW
- 2191 LOCKWASHER
- 8539 SCREW
- 7002 WASHER
- 2191 LOCKWASHER
- 86738 SUPPORT PLATE
- 85281 CROSS SHAFT AND GEAR
- 85276 ZERO LEVER SUPPORT
- 74986 SCREW
- 7002 WASHER
- 2191 LOCKWASHER
- 86341 SET SCREW
- 85788 COLLAR
- 85935 SPRING POST
- 74986 SCREW
- 2191 LOCKWASHER
- 85785 CROSS SHAFT BEARING
- 76804 SPRING
- 3248 SHAFT
- 85787 ZERO LEVER
- 33-143 STOP SCREW
- 2191 LOCKWASHER
- 76318 ADJUSTING SCREW
- 3598 NUT
- 6807 SET SCREW
- 1269 ADJUSTING SCREW
- 3598 NUT
- 86739 ADJUSTING SCREW
- 86740 SET SCREW
- 6814 PILOT SCREW
- 2191 LOCK WASHER
- 86215 REJET COLLAR LEVER
- 1176 SET SCREW
- 86103 ZERO LEVER BALL
- 2189 SHAFT
- 6811 SCREW
- 2191 LOCKWASHER
- 7002 WASHER
- 85279 ZERO LEVER BALL SUPPORT
- 13268 TRANSFER BALL BRACKET
- 8795 GUIDE PLATE
- 8760 BRACKET
- 11.9 SCREW
- 35.9 NUT
- 85319 OIL PLUG
- 85318 WASHER (LEATHER)
- 3595 NUT
- 78103 SCREW
- 2191 LOCKWASHER
- GEAR - SEE PAGES #11 & 12
- 85321 SPACER
- 80444 SCREW
- 2191 LOCKWASHER
- 7002 WASHER
- 72644 BEARING
- 76088 LOCK NUT
- 7392 SPRING
- 88754 SHAFT
- 85313 FRICTION DISC
- 76084 WASHER (FRICTION)
- 80444 SCREW
- 2191 LOCKWASHER
- 88749 BEARING SLEEVE
- 88752 WASHER (FELT)
- 88750 BEARING NUT
- 88751 WASHER (SLOTTED)
- 85320 STOP BLADE
- 86087 GARTER SPRING (FOR OLD STYLE SEE PAGE #6)
- 85347 STOP PIN PLUNGER
- 72521 OIL WICK
- 85341 BUSHING
- 76417 ROLLER
- 85344 STUD
- 6746 SCREW
- 2191 LOCKWASHER
- 1269 SCREW
- 85349 SPRING DISC
- 86304 SPRING
- 85325 SPACER
- 85346 SHAFT
- 85805 SPRING
- 85335 GUIDE DISC
- 76414 STOP PIN
- 73175 LOCKWASHER
- 8539 NUT
- 85315 NUT
- 70497 NUT
- 1162 SCREW
- 3640 LOCKWASHER
- 85348 COVER PLATE
- 85345 INDEX PIN GUIDE
- 85343 WASHER
- 85340 CODE DISC #4
- 85339 CODE DISC #3
- 85342 SPACER
- 85338 CODE DISC #2
- 85337 CODE DISC #1
- 85336 GUIDE DISC
- 85343 WASHER
- 76321 SCREW
- 2669 LOCK WASHER
- 34432 WASHER
- 4809 OIL WICK
- 85333 BRACKET
- 85334 FULCRUM DISC
- 6746 SCREW
- 2191 LOCKWASHER
- 7384 OIL CUP

- 85471 SCREW
- 2669 LOCKWASHER
- 85933 BEARING CAP
- FOR OLD STYLE BRACKET & STUD SEE PAGE #6
- 3598 NUT
- 200-214 SHIM
- 2191 LOCKWASHER
- 85931 SPRING POST
- 8570 SPRING
- 86209 STUD
- 85286 RETURN CLUTCH THROWOUT LEVER
- 7002 WASHER
- 2191 LOCKWASHER
- 3598 NUT
- 85282 GEAR-38 TEETH
- 1169 SCREW
- 2191 LOCKWASHER
- 2539 NUT
- 73175 LOCKWASHER
- 74419 BUSHING
- 85793 STUD
- 2382 LOCKWASHER
- 34432 WASHER
- 85784 ROLLER
- 3595 NUT
- 76555 WASHER
- 74110 STUD
- 7002 WASHER
- 2191 LOCKWASHER
- 3598 NUT
- 85917 BEARING
- 6811 SCREW
- 2191 LOCKWASHER
- 85289 SPRING BRACKET
- 1026 SCREW
- 7002 WASHER
- 2191 LOCKWASHER
- 85931 SPRING POST
- 1098 SHOULDER SCREW
- 35-104 SPRING
- REPEAT KEYLEVER (SEE PAGE #4)
- 6746 SCREW
- 2191 LOCKWASHER
- 85262 STUD
- 85261 ROLLER
- 2669 LOCKWASHER
- 85471 SCREW
- 2669 LOCKWASHER
- 85933 BEARING CAP
- 78103 SCREW
- 2191 LOCKWASHER
- 85803 SPACER
- 85320 GEAR-75 TEETH
- 74067 GEAR HUB
- 6994 BEARING
- 7815 WASHER
- 85316 RETURN CAM
- 85317 PIN
- 72522 OIL WICK
- 7391 RETURN CLUTCH (DRIVEN MEMBER)
- 7389 RETURN CLUTCH (DRIVING MEMBER)
- 85802 CAM SLEEVE
- 85804 MAIN SHAFT (WITH DRIVING CLUTCH MEMBER)
- 85310 SPRING
- 85309 CLUTCH
- 85312 START DISC
- 76084 WASHER (FRICTION)
- 85313 FRICTION DISC
- 85344 SPRING
- 76088 LOCK NUT
- 6994 BEARING
- 72579 WASHER
- 1109 SET SCREW (OIL RETAINER)

COUNTING CLUTCH SHAFT

MAIN CLUTCH SHAFT

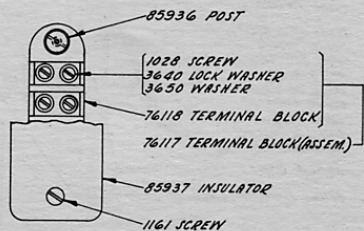
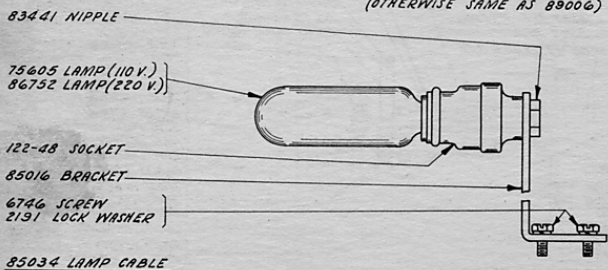
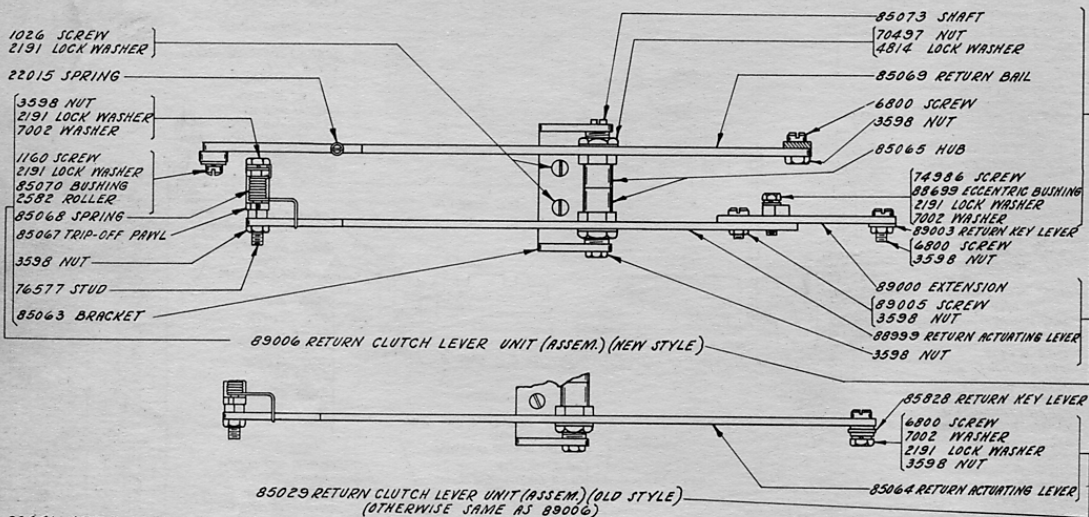
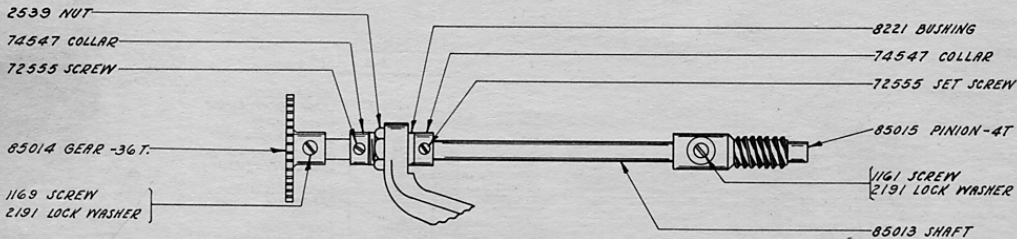
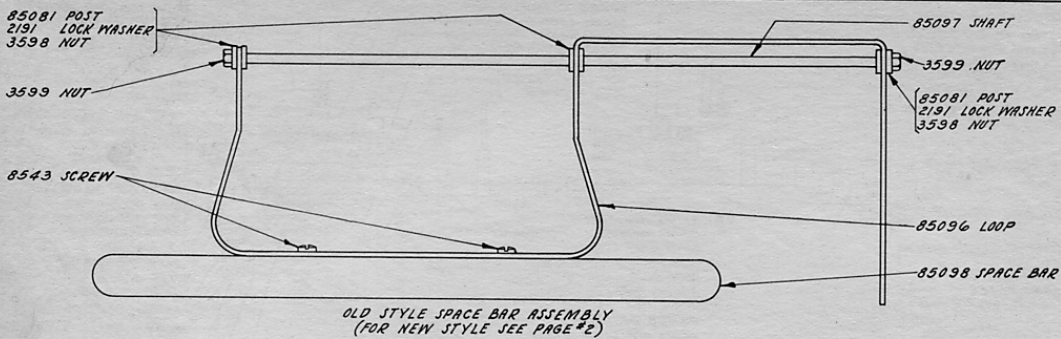




SELECTOR BAR LINKS		
NO. STAMPED ON LINK	CATALOG NUMBER	NO. REQ.
A	85141	1
B	85144	1
C	85146	1
D	85148	1

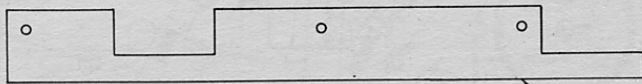
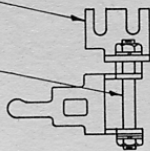
PERFORATING SELECTOR BARS		
NO. STAMPED ON CODE BAR	CATALOG NUMBER	NO. REQ.
A-1	85175	1
A-2	85174	1
B-1	85177	1
B-2	85176	1
C-1	85179	1
C-2	85178	1
D-1	85181	1
D-2	85180	1
E-1	85183	1
E-2	85182	1
F-1	85185	1
F-2	85184	1
UB	85186	1

COUNTING SELECTOR BARS		
NO. STAMPED ON BAR	CATALOG NUMBER	NO. REQ.
CA-1	85164	2
CB-1	85165	2
CC-1	85166	2
CD-1	85167	2



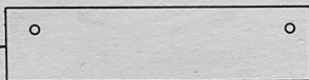
85285 BRACKET (OLD STYLE)

7386 STUD (ALSO SEE PAGE #3)

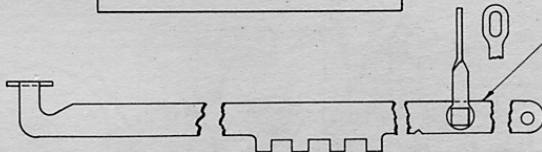


85790 RETAINING PLATE  
(FOR NEW STYLE SEE PAGE #2)

85826 RETAINING PLATE  
(FOR NEW STYLE SEE PAGE #2)



85828 CARRIAGE RETURN KEYLEVER  
(FOR NEW STYLE SEE PAGES 1 & 2)



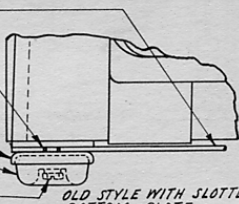
86755 BOTTOM PLATE

86757 SPACER

86756 CUP

35503 RUBBER FOOT

6811 SCREW  
7002 WASHER

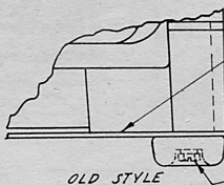


OLD STYLE WITH SLOTTED  
BOTTOM PLATE  
(FOR NEW STYLE SEE PAGE #2)

85135 BOTTOM PLATE

35503 RUBBER FOOT

6811 SCREW  
7002 WASHER



OLD STYLE

85324 START DISC

85331 DRIVE ARM

34432 WASHER

85296 WORM SHAFT

85530 COLLAR



85291 SHAFT

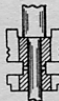
85313 FRICTION DISC

76084 WASHER

85332 NUT

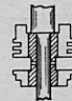
85328 STOP BLADE

85329 GARTER SPRING



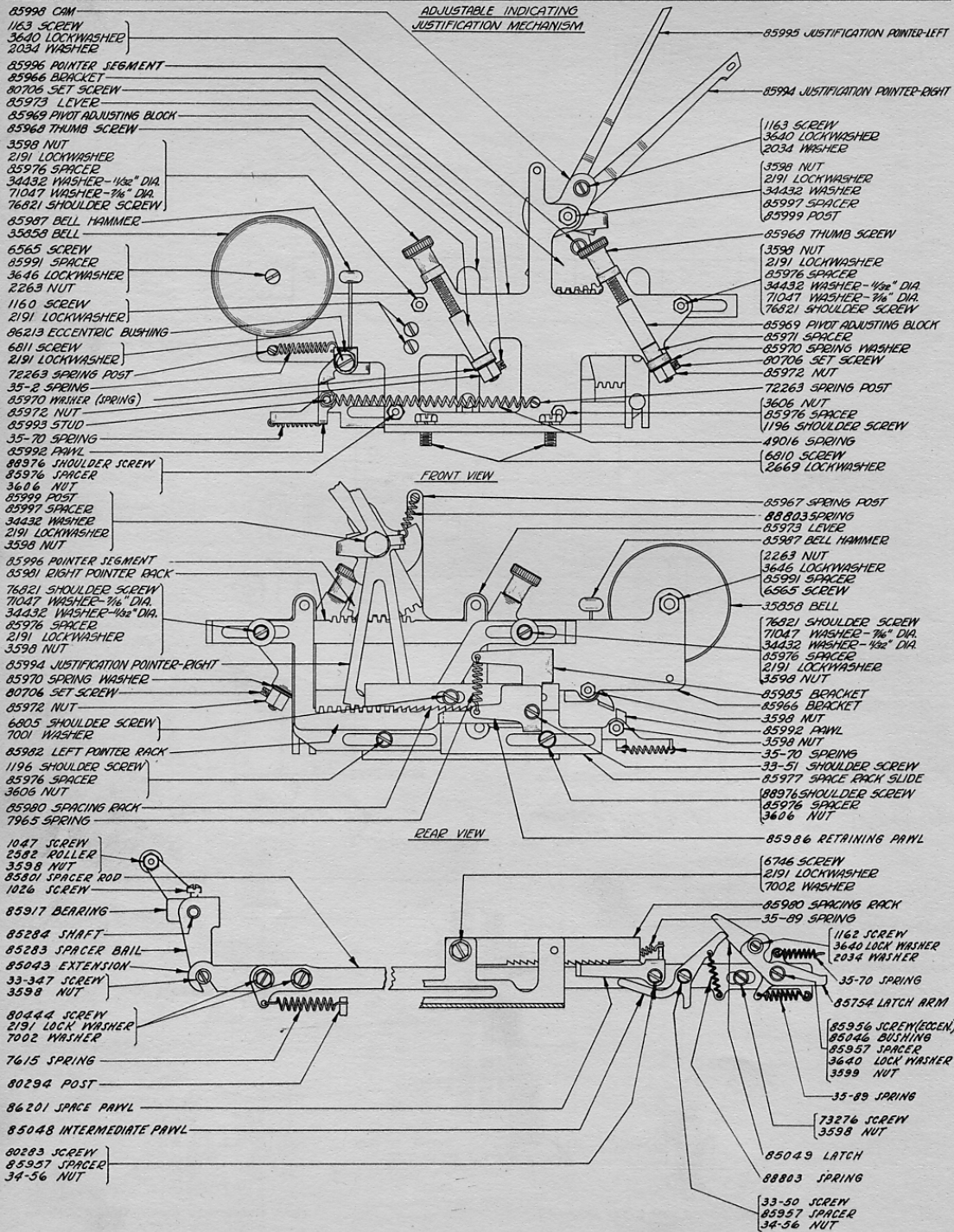
85296 WORM SHAFT & UNIT BLADE HEAD  
(OLD STYLE)

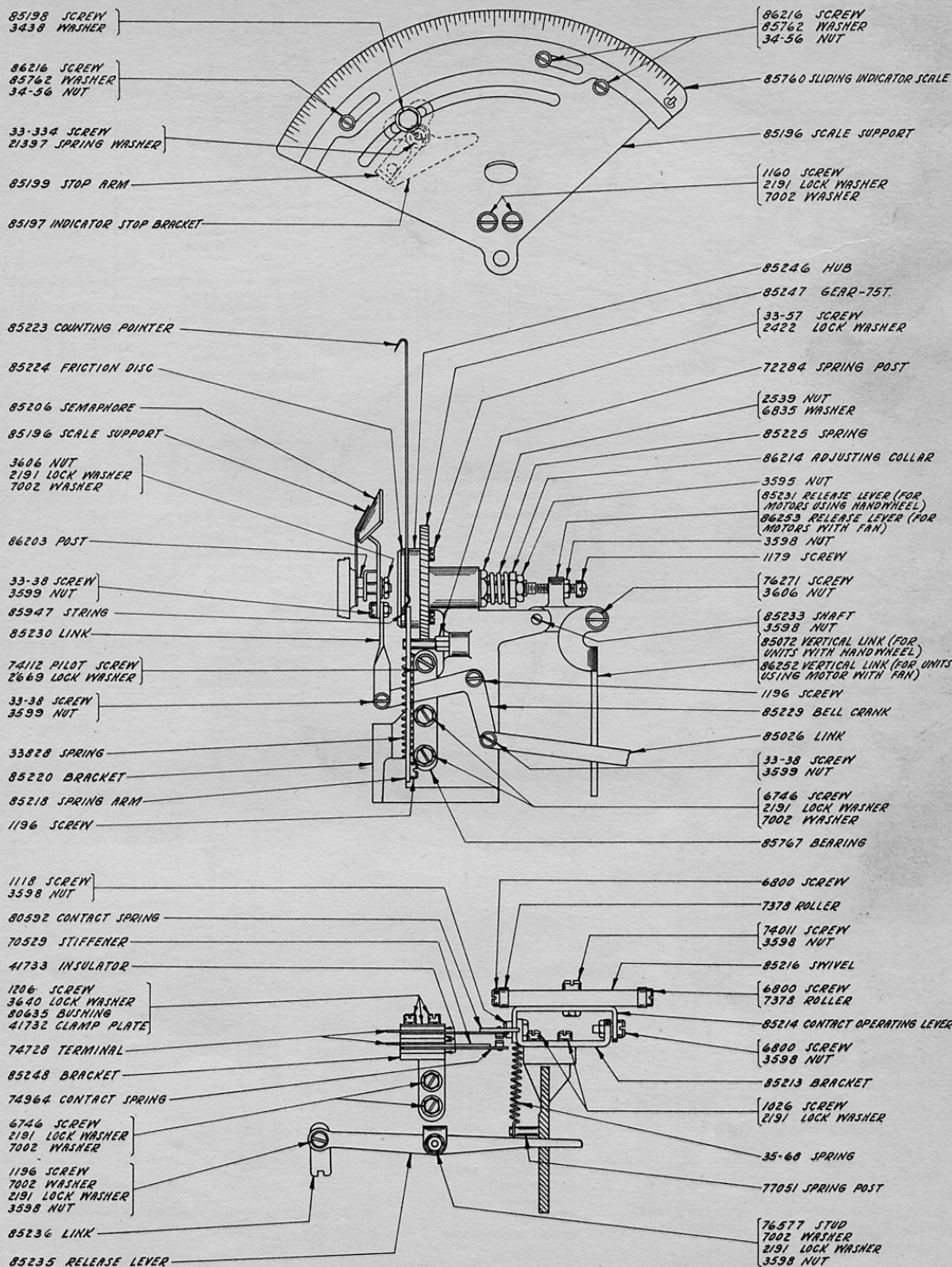
(FOR NEW STYLE SEE PAGE #3)

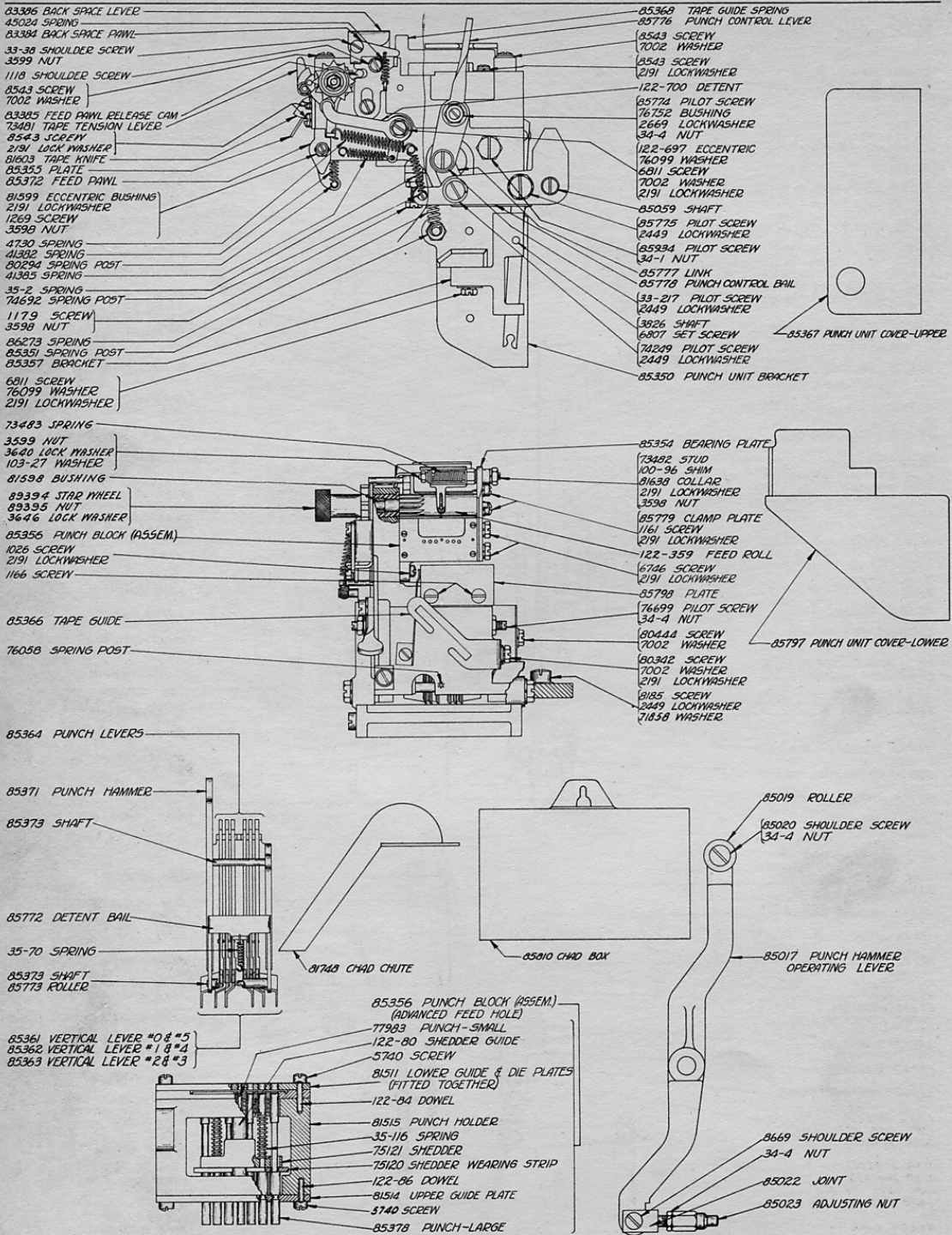


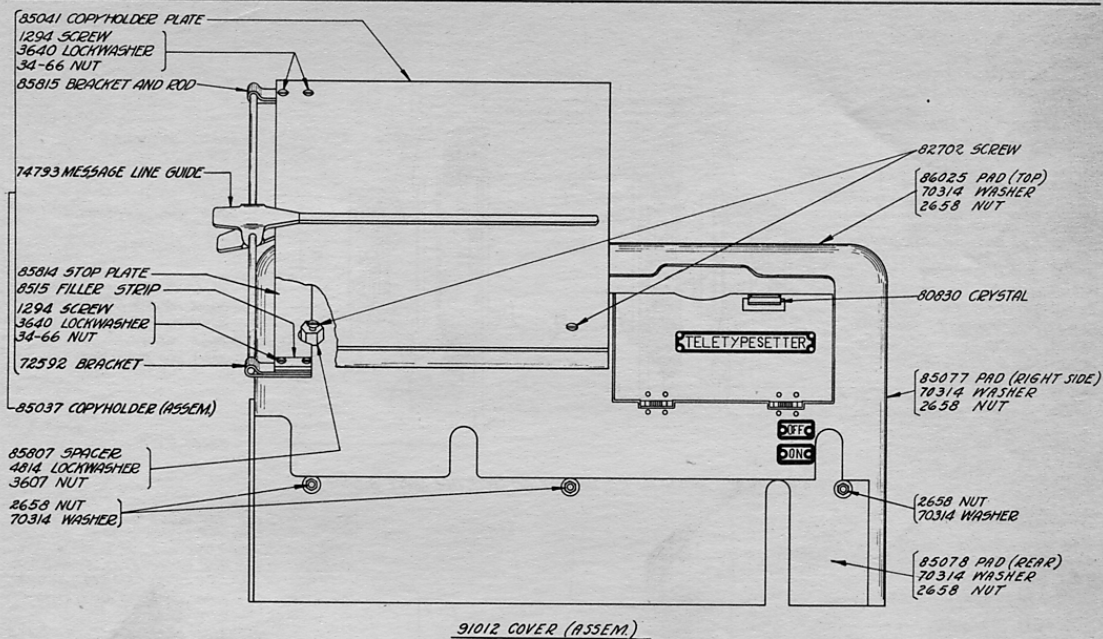
86081 WORM SHAFT & UNIT BLADE HEAD  
NEW STYLE (SEE PAGE #3)

ADJUSTABLE INDICATING  
JUSTIFICATION MECHANISM

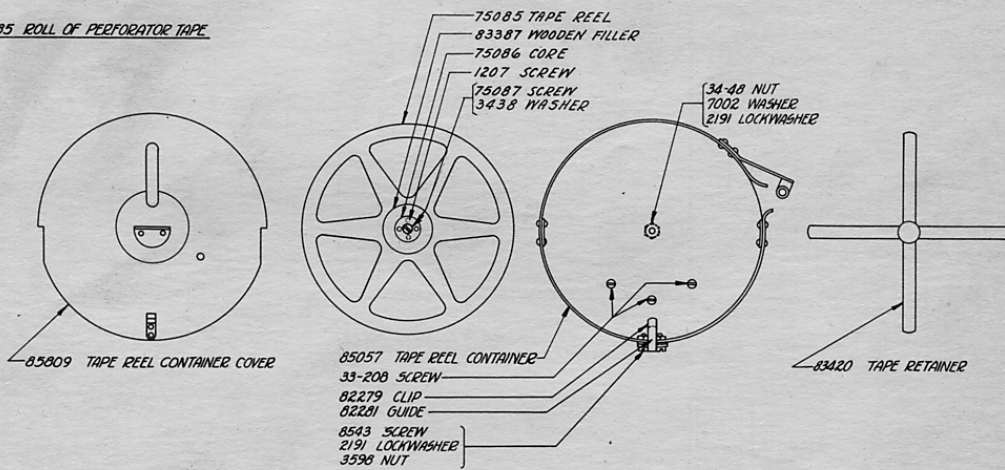




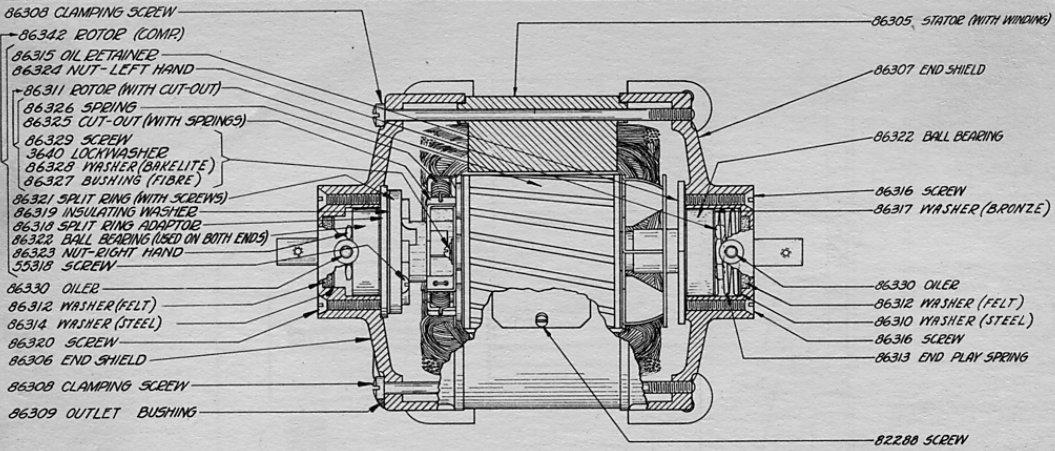




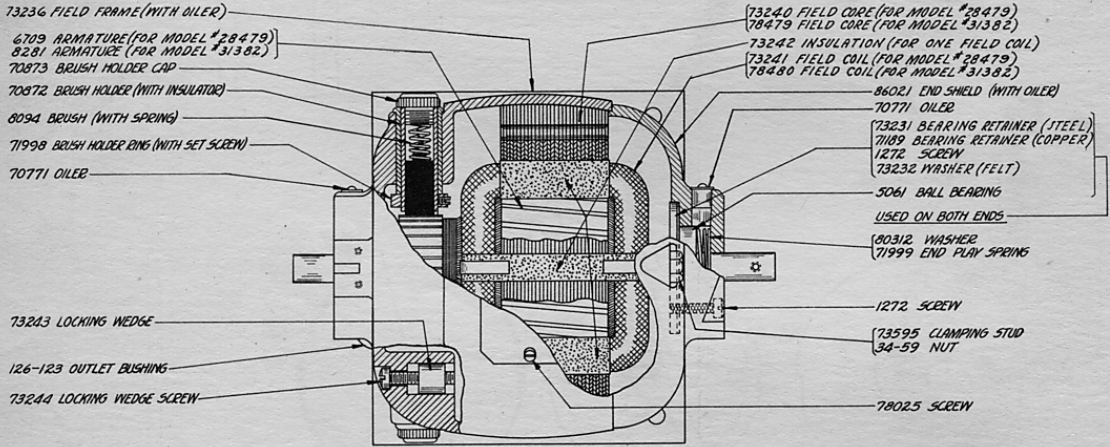
82685 ROLL OF PERFORATOR TAPE



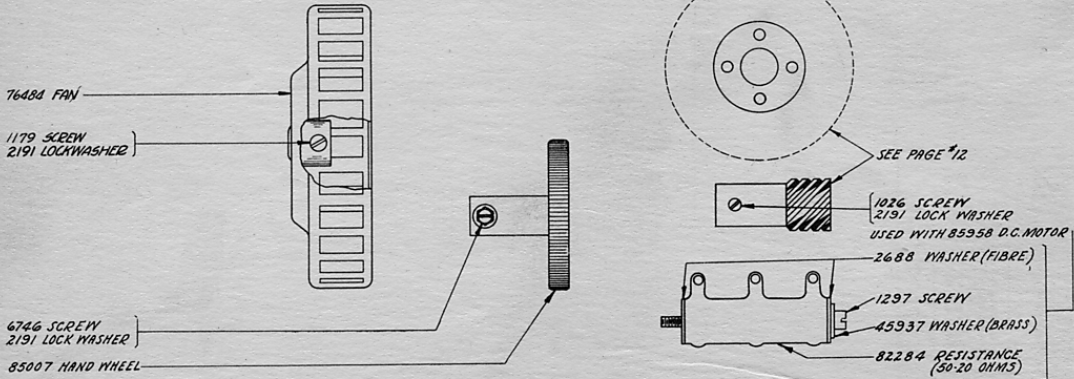
SELECTION CODE #2		
PERFORATING SELECTOR BARS		
NO. STAMPED ON CODE BAR	CATALOG NUMBER	NO. REQ.
A1B	89452	1
A-2B	89453	1
B-1B	89454	1
B-2B	89455	1
C-1B	89456	1
C-2B	89457	1
D-1B	89458	1
D-2B	89459	1
E-1B	89460	1
E-2B	89461	1
F-1	85185	1
F-2	85184	1
UB	85186	1



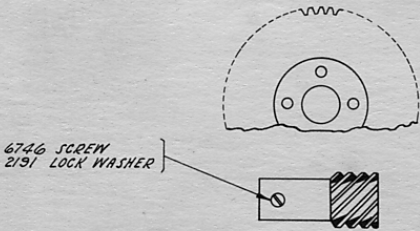
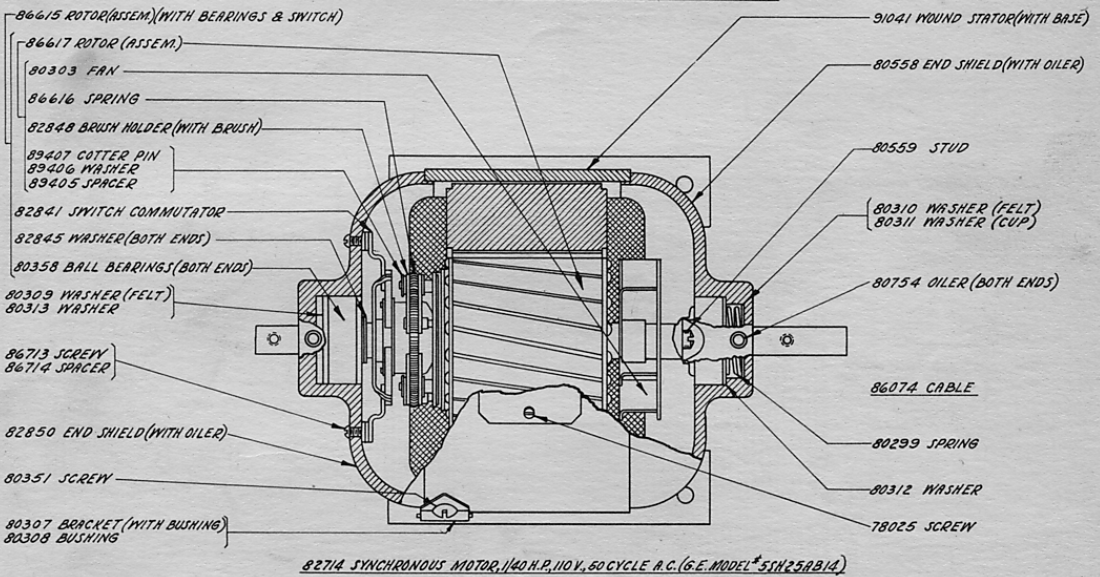
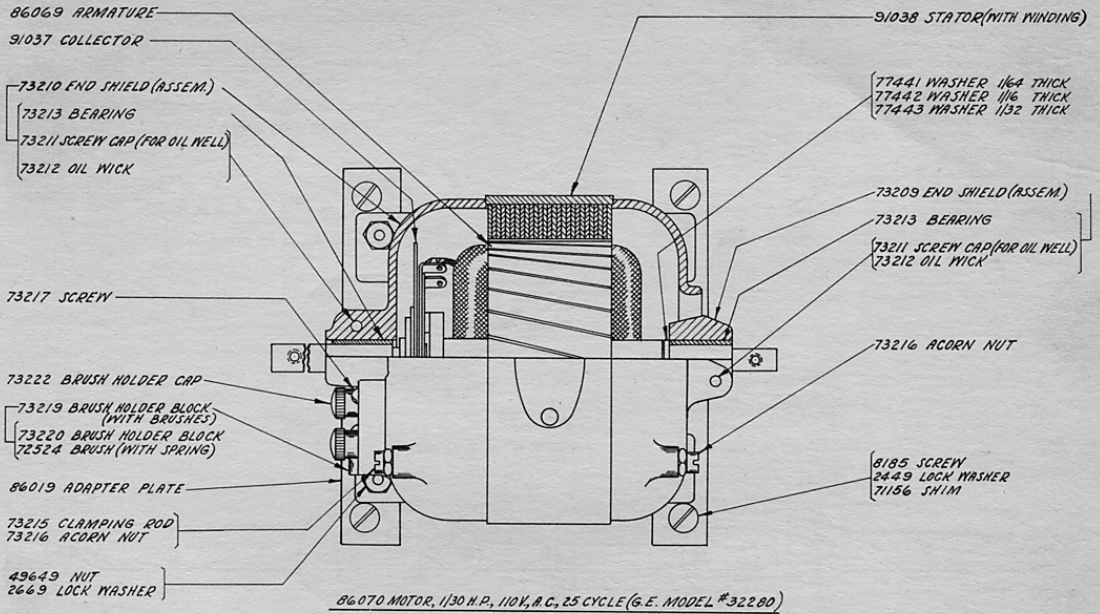
83799 SYNCHRONOUS MOTOR, 160 H.P., 110V., A.C. 60 CYCLE. (H-C MODEL 5-9005)



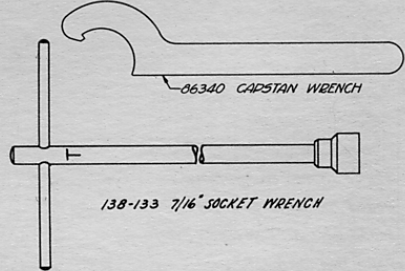
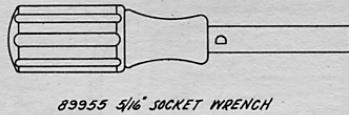
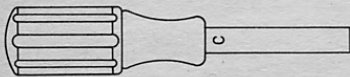
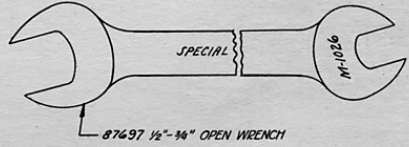
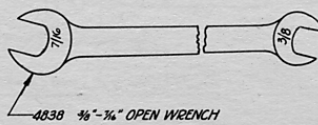
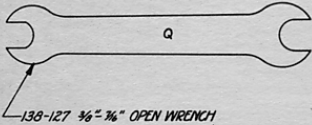
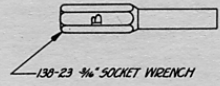
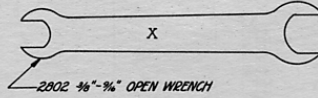
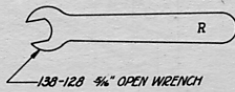
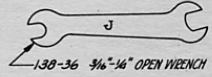
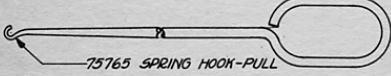
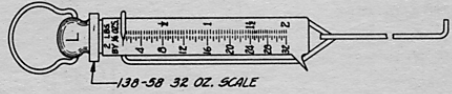
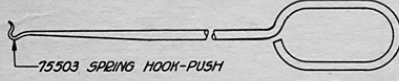
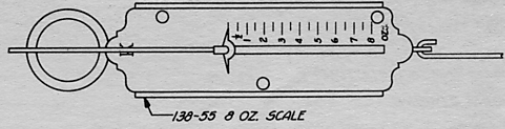
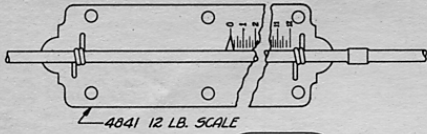
85958 MOTOR, 120 H.P., 110V., D.C. (G.E. MODEL #28479)  
86614 MOTOR, 120 H.P., 220V., D.C. (G.E. MODEL #31382)



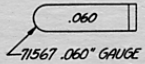
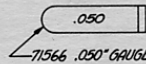
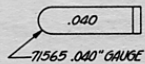
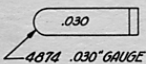
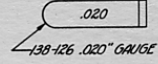
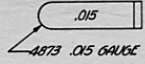
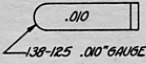
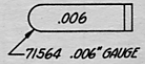
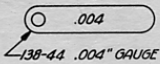
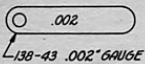
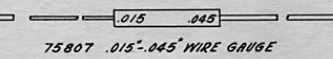
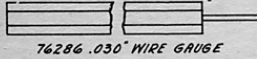
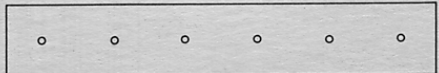
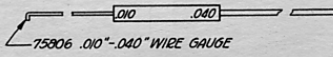
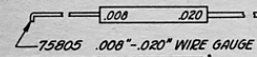




GEARS & PINIONS			
86016	PINION	12T	25 CYCLE A.C. - 150 W.P.M.
86017	GEAR	40T	
85051	PINION	12T	50 CYCLE A.C. - 125 W.P.M.
85322	GEAR	48T	60 CYCLE A.C. - 150 W.P.M.
			110V. & 220V. D.C. - 150 W.P.M.
89463	PINION	12T	50 CYCLE A.C. - 150 W.P.M.
89462	GEAR	40T	



130-133 7/16" SOCKET WRENCH



86301 SET OF TOOLS

NUMERICAL INDEX

33-38	Screw (4-40 Shoulder), 8, 9	2074	Washer, 7	41382	Spring, 9
33-45	Screw (4-40 x 1/2 Special), 4	2191	Lock Washer, 2,3,4,5,7,8, 9,10,11,12	41385	Spring, 9
33-50	Screw (4-40 Shoulder), 7	2215	Tape Gauge, 13	41732	Clamping Plate, 8
33-51	Screw (2-56 x 9/32), 8	2263	Nut (8-32 Hex.), 7	41733	Insulator, 8
33-57	Screw (4-40 Shoulder), 7	2322	Lock Washer, 2	45937	Spring, 9
33-123	Screw (6-40 Pilot), 3	2382	Lock Washer, 3	49016	Washer (Brass), 11
33-143	Screw (4-40 Shoulder), 4	2422	Lock Washer, 2	55080	Spring, 7
33-170	Screw (6-40 Shoulder), 4	2449	Lock Washer, 2,9	55318	Screw (6-32 x 1/4), 11
33-185	Screw (4-40 Shoulder), 4	2539	Nut (3/8 - 32 Hex.), 2,3,5,8	70314	Washer, 10
33-208	Screw (10-32 x 1/2), 10	2566	Space Bar Loop Spring, 2	70497	Nut (5/16 - 32 Hex.), 3,5
33-217	Screw (1/4-32 Pilot), 9	2582	Roller, 4,5,7	70529	Stiffener, 8
33-334	Screw (4-40 Shoulder), 8	2658	Nut (6-32 Hex.), 10	70771	Oiler, 11
33-347	Screw (6-40 Shoulder), 7	2663	Rubber Buffer, 2	70872	Brush Holder (with Insulator), 11
34-1	Nut (1/4 - 32 Hex.), 9	2669	Lock Washer, 2,3,4,7,8,9	70873	Brush Holder Cap, 11
34-4	Nut (6-32 Hex.), 10	2688	Washer (Fibre), 11	70886	Washer, 3
34-48	Nut (4-40 Hex.), 4, 7, 8	2789	Shaft, 3	71047	Washer, 7
34-56	Nut (10-30 Hex.), 11	2802	Open Wrench (3/8 - 9/16), 13	71156	Shim, 2
34-69	Nut (4-36 Hex.), 10	3298	Eccentric Stop, 3	71189	Bearing Retainer (Copper), 11
35-2	Spring, 7, 9	3339	Nut (9/16 - 32 Hex.), 2	71564	Gauge (.006), 13
35-68	Spring, 8	3438	Washer, 4,8,10	71565	Gauge (.040), 13
35-70	Spring, 3, 7, 9	3595	Nut (1/4-32 Hex.), 3,8	71566	Gauge (.050), 13
35-71	Spring, 4	3598	Nut (6-40 Hex.), 2,3,4,5,7, 8,9,10	71567	Gauge (.060), 13
35-89	Spring, 7	3599	Nut (4-40 Hex.), 3,4,5,7,8,9	71858	Washer, 9
35-104	Spring, 3, 4	3606	Nut (6-40 Hex.), 2,4,7,8	71998	Brush Holder Ring (with Set Screw), 11
35-116	Spring, 9	3607	Nut (5/16-32 Hex.), 10	71999	End Play Spring, 11
35-133	Spring, 4, 6	3640	Lock Washer, 3,4,5,7,8,9, 10,11	72263	Spring Post, 2,4,7
36-114	Pin, 2	3646	Lock Washer, 7,9	72284	Spring Post, 8
100-96	Shim, 9	3650	Washer, 5	72521	Oil Wick, 3
103-27	Washer, 4, 9	3826	Shaft, 9	72522	Oil Wick, 3
122-48	Socket, 5	3843	Spring, 2	72524	Brush (with Spring), 12
122-60	Star Wheel, 7	4730	Spring, 9	72545	Bearing Post, 2
122-80	Shedder Guide, 9	4809	Oil Wick, 3	72555	Screw (6-40 x 9/64), 5
122-84	Dowel, 9	4814	Lock Washer, 5,10	72579	Washer, 3
122-86	Dowel, 9	4838	Open Wrench (3/8 - 7/16), 13	72592	Bracket, 10
122-108	Bushing, 4	4841	Scale (12 Lb.), 13	72643	Screw (6-40 Shoulder), 2,4
122-194	Key Packing, 4	4873	Gauge (.015), 13	72644	Bearing, 3
122-195	Celluloid Cover, 4	4874	Gauge (.030), 13	73175	Lock Washer, 3
122-196	Small Bezel, 4	5061	Ball Bearing, 11	73180	Toggle Switch, 2
122-359	Feed Roll, 9	5740	Screw (2-56 x 1/4), 9	73209	End Shield (Assem.), 12
122-697	Eccentric, 9	6565	Screw (8-32 x 1-1/4), 7	73210	End Shield (Assem.), 12
122-700	Detent, 9	6709	Armature, 11	73211	Screw Cap (For Oil Well), 12
123-123	Roller, 4	6746	Screw (6-40 x 5/16), 2,3,5, 7,8,9,11,12	73212	Oil Wick, 12
126-123	Outlet Bushing, 11	6800	Screw (6-40 Shoulder), 5,8	73215	Bearing, 12
138-22	Screw Driver, 13	6805	Screw (6-40 Shoulder), 7	73216	Clamping Rod, 12
138-23	Socket Wrench (3/16), 13	6807	Screw (6-40 x 3/16 Set), 3,4,9	73217	Acorn Nut, 12
138-36	Open Wrench (3/16 - 1/4), 13	6810	Screw (6-40 x 3/16 Set), 3,4,9	73219	Screw (8-36 x 9/16), 12
138-43	Gauge (.002), 13	6814	Screw (6-40 Pilot), 3	73219	Brush Holder Block (with Brushes), 12
138-44	Gauge (.004), 13	6835	Washer, 8	73220	Brush Holder Block, 12
138-55	Scale (8 oz.), 13	6994	Bearing, 3	73222	Brush Holder Cap, 12
138-58	Scale (32 oz.), 13	7001	Washer, 4,7	73231	Bearing Retainer (Steel), 11
138-125	Gauge (.010), 13	7002	Washer, 2,3,4,5,6,7,8,9,10	73232	Washer (Felt), 11
138-126	Gauge (.020), 13	7334	Post, 2	73236	Field Frame (with Oiler), 11
138-127	Open Wrench (3/8 - 7/16), 13	7378	Roller, 8	73240	Field Core, 11
138-128	Open Wrench (5/16), 13	7386	Oil Cup, 3	73241	Field Coil, 11
138-133	Socket Wrench (7/16), 13	7389	Stud, 6	73242	Insulation (for one Field Coil), 11
200-214	Shim, 3	7391	Return Clutch (Driving Member), 3	73243	Locking Wedge, 11
1026	Screw (6-40 x 3/8), 2,3,4,5, 7,8,9,11	7392	Return Clutch (Driven Member), 3	73244	Screw (10-32 x 7/8), 11
1028	Screw (4-40 x 1/4), 5	7615	Spring, 3	73276	Screw (6-40 Shoulder), 7
1041	Screw (6-40 Shoulder), 3	7815	Spring, 7	73481	Tape Tension Lever, 9
1047	Screw (6-40 Shoulder), 4,7	7965	Washer, 3	73482	Stud, 9
1098	Screw (6-40 Shoulder), 3,4	8094	Spring, 4,7	73483	Spring, 9
1109	Screw (Oil Retainer) (10-32 x 7/32 Set), 3	8185	Brush (with Spring), 11	73595	Clamping Stud, 11
1113	Screw (1/4 - 20 x 7/8), 2	8221	Screw (1/4 - 20 x 3/4), 9	74011	Screw (6-40 Shoulder), 8
1118	Screw (6-40 Shoulder), 8,9	8281	Bushing, 5	74110	Stud, 3
1121	Screw (10-32 x 3/8), 2	8515	Armature, 11	74112	Screw (10-32 Pilot), 8
1159	Screw (4-40 x 3/8), 3,4	8539	Filler Strip, 10	74249	Screw (1/4-32 Pilot), 9
1160	Screw (6-40 x 5/16), 5,7,8	8543	Screw (6-40 x 1/2), 3,4	74449	Bushing, 3
1161	Screw (6-40 x 1/4), 5,9	8669	Screw (6-40 x 1/4), 2,4,5, 9,10	74547	Collar, 5
1162	Screw (4-40 x 1/4), 3,4,7	21397	Screw (6-40 Shoulder), 9	74692	Spring Post, 9
1163	Screw (4-40 x 3/16), 7	22015	Spring Washer, 8	74728	Terminal, 8
1164	Screw (2-56 x 3/16), 7	27492	Spring, 5	74738	Screw (10-32 Shoulder), 2
1166	Screw (4-36 x 1/4), 9	33828	Spring, 4	74793	Message Line Guide, 10
1169	Screw (6-40 x 7/16), 2,3,4,5	34432	Spring, 8	74964	Contact Spring, 8
1176	Set Screw (6-40 x 3/16), 3,4	3503	Washer, 2,3,4,6,7	74986	Screw (6-40 x 13/32), 3,5
1179	Screw (6-40 x 5/8), 8,9,11	35858	Rubber Foot, 6	75085	Tape Reel, 10
1196	Screw (6-40 Shoulder), 4,7,8	36315	Bell, 7	75086	Core, 10
1206	Screw (4-40 x 9/16), 8		Spring, 4	75087	Screw (6-32 Shoulder), 10
1207	Screw (4-36 x 5/16), 10			75120	Shedder Wearing Strip, 9
1208	Screw (10-32 x 5/8), 2,4			75121	Shedder, 9
1223	Screw (10-32 x 1/2), 2			75503	Spring Hook (Push), 13
1268	Screw (.138 - 40 x 5/16), 3			75605	Lamp, 5
1269	Screw (6-40 x 1/2), 2,4,9			75765	Spring Hook (Pull), 13
1272	Screw (6-40 x 11/16), 11			75805	Wire Gauge (.008 - .020), 13
1294	Screw (4-36 x 1/2), 10				
1297	Screw (6-40 x 2-7/16), 11				

NUMERICAL INDEX

75806	Wire Gauge (.010 - .040), 13	83387	Wooden Filler, 10	85118	Counting Code Key Lever (7-11), 1
75807	Wire Gauge (.015 - .045), 13	83420	Tape Retainer, 10	85119	Counting Code Key Lever (6-8), 1
76036	"T" Transfer Lever, 4	83441	Nipple, 5	85120	Counting Code Key Lever (7-13), 1
76037	Bushing, 4	83799	Synchronous Motor 1/40 H.P., 110 V., A.C., 60 Cycle, 11	85121	Counting Code Key Lever (6-13), 1
76038	Spacer, 4	85002	Plunger Guide, 2,4	85122	Counting Code Key Lever (10-14), 1
76058	Spring Post, 9	85003	Plunger, 4	85123	Counting Code Key Lever (10-13), 1
76067	Gear Hub, 3	85007	Hand Wheel, 11	85124	Counting Code Key Lever (9-15), 1
76084	Washer (Friction), 3,6	85013	Shaft, 5	85125	Counting Code Key Lever (7-14), 1
76088	Lock Nut, 3	85014	Gear - 36T, 5	85126	Counting Code Key Lever (9-13), 1
76099	Washer, 9	85015	Pinion - 4T, 5	85127	Function Code Key Lever, 1
76117	Terminal Block (Assem.), 5	85016	Bracket, 5	85128	Connecting Link, 4
76118	Terminal Block, 5	85017	Punch Hammer Operating Lever, 9	85130	Counting Selector Bar Unit, 4
76271	Screw (6-40 Shoulder), 8	85019	Roller, 9	85135	Bottom Plate, 2,6
76286	Wire Gauge (.030), 13	85020	Screw (10-32 Shoulder), 9	85141	Selector Bar Link (A), 4
76298	Spring, 4	85022	Joint, 9	85144	Selector Bar Link (B), 4
76318	Screw (6-40 x 3/8), 3	85023	Mut (10-32 Special), 9	85146	Selector Bar Link (C), 4
76414	Stop Pin, 3	85024	Shift Ball Stop Plate, 2,4	85148	Selector Bar Link (D), 4
76417	Roller, 3	85026	Link, 4,8	85153	Selector Bar Links #1 & #2, 4
76484	Fan, 11	85029	Gross Beam Unit (Assem.), 5	85154	Selector Bar Link #3, 4
76955	Washer, 3	85031	Bracket, 2	85155	Selector Bar Link #4, 4
76977	Stud, 5,8	85033	Lamp Cable, 5	85156	Selector Bar Links #5 & #6, 4
76999	Screw (10-32 Pilot), 9	85035	Switch Cable, 2	85160	Guide (Right), 4
76999	Bushing, 9	85037	Copypolder (Assem.), 10	85163	Shaft, 4
76999	Spring, 3	85041	Copypolder Plate, 10	85164	Counting Selector Bar (CA-1), 4
76821	Screw (6-40 Shoulder), 7	85043	Extension, 7	85165	Counting Selector Bar (CB-1), 4
77051	Spring Post, 8	85046	Bushing, 7	85166	Counting Selector Bar (CC-1), 4
77441	Washer (1/64 thick), 12	85048	Intermediate Pawl, 7	85167	Counting Selector Bar (CD-1), 4
77442	Washer (1/16 thick), 12	85049	Latch, 7	85168	Retainer, 4
77443	Washer (1/32 thick), 12	85051	Pinion - 12T, 12	85169	Shim, 4
77983	Punch (small), 9	85052	Shift Ball Detent, 4	85170	Counting Selector Lever, 4
78025	Screw (4-48 x 3/16), 11,12	85057	Tape Reel Container, 10	85172	Shaft, 4
78028	Screw (6-40 x 15/16), 4	85059	Shaft, 9	85174	Code Bar (A-2), 4
78075	Screw (6-40 Pilot), 2	85063	Bracket, 5	85175	Code Bar (A-1), 4
78103	Screw (6-40 x 1-3/16), 3	85064	Return Actuating Lever, 5	85176	Code Bar (B-2), 4
78301	Screw (10-32 x 5/8), 3	85065	Hub, 5	85177	Code Bar (B-1), 4
78479	Field Core, 11	85067	Trip-off Pawl, 5	85178	Code Bar (C-2), 4
78480	Field Coil, 11	85068	Spring, 5	85179	Code Bar (C-1), 4
78551	Shaft, 4	85069	Return Ball, 5	85180	Code Bar (D-2), 4
78552	Retainer, 4	85070	Bushing, 5	85181	Code Bar (D-1), 4
80283	Screw (4-40 Shoulder), 7	85072	Vertical Link, 8	85182	Code Bar (E-2), 4
80294	Spring Post, 2,7,9	85073	Shaft, 5	85183	Code Bar (E-1), 4
80299	Spring, 12	85077	Pad (Right Side), 10	85184	Code Bar (F-2), 4
80303	Fan, 12	85078	Pad (Left Side), 10	85185	Code Bar (F-1), 4
80307	Bracket (with Bushing), 12	85080	Base (Black), 2	85186	Universal Bar (UB), 4
80308	Bushing, 12	85081	Bearing Post, 5	85188	Shift Lever, 4
80309	Washer (Felt), 12	85082	Key Lever, Row 4 (12), 1,2	85190	Unshift Lever, 4
80310	Washer (Felt), 12	85083	Key Lever, Row 3 (14), 1,2	85196	Scale Support, 8
80311	Washer (Cup), 12	85084	Key Lever, Row 1 (15), 1,2	85197	Indicator Stop Bracket, 8
80312	Washer, 11,12	85085	Key Lever, Row 2 (15), 1,2	85198	Screw (10-32 x 3/16), 8
80313	Washer, 12	85090	Function Key Lever (3), 1,2	85199	Stop Arm, 8
80342	Screw (6-40 x 23/64), 9	85093	Shaft, 4	85206	Semaphore, 8
80351	Screw (8-36 x 3/16), 12	85094	Key Lever Guide (Rear), 2	85213	Bracket, 8
80358	Ball Bearings, 12	85095	Key Lever Guide (Front), 2	85214	Contact Operating Lever, 8
80444	Screw (6-40 x 1/4), 3,7,9	85096	Spacer Bar Loop, 5	85216	Swivel, 8
80558	End Shield (with Oiler), 12	85097	Shaft, 5	85218	Spring Arm, 8
80559	Stud, 12	85098	Space Bar, 2,5	85220	Pointer Bracket, 8
80592	Contact Spring, 8	85099	Key Lever Spring Plate, 2	85223	Counting Pointer, 8
80635	Bushing, 8	85100	Bracket, 2,4	85224	Friction Disc, 8
80706	Screw (6-40 x 3/16 Set), 7	85102	Perforating Selector Bar Unit, 4	85225	Spring, 8
80754	Oiler, 12	85103	Shift Ball, 2	85229	Bell Crank, 8
80830	Crystal, 10	85104	Shift Bracket, 4	85230	Link, 8
81511	Lower Guide & Die Plates (Fitted together), 9	85105	Shift Ball Extension, 4	85231	Release Lever, 8
81514	Upper Guide Plate, 9	85106	Counting Code Key Lever (6-6), 1	85233	Shaft, 8
81515	Punch Holder, 9	85107	Counting Code Key Lever (9-9), 1	85235	Release Lever, 8
81598	Bushing, 9	85108	Counting Code Key Lever (18-18), 1	85236	Link, 8
81599	Eccentric Bushing, 9	85109	Counting Code Key Lever (9-18), 1	85246	Hub, 8
81603	Tape Knife, 9	85110	Counting Code Key Lever (11-14), 1	85247	Gear - 75 T, 8
81638	Collar, 9	85111	Counting Code Key Lever (9-12), 1	85248	Bracket, 8
81748	Chad Chute, 9	85112	Counting Code Key Lever (15-18), 1	85251	Stop Lever, 4
82279	Clip, 10	85113	Counting Code Key Lever (9-11), 1	85252	Screw (10-32 Shoulder), 4
82281	Guide, 10	85114	Counting Code Key Lever (11-15), 1	85253	Roller, 4
82284	Resistance (50-20 Ohms), 11	85115	Counting Code Key Lever (6-18), 1	85254	Screw (6-40 Eccentric Shoulder), 4
82288	Screw (4-40 x 1/4), 11	85116	Counting Code Key Lever (10-15), 1	85255	Stop Lever Latch, 4
82313	Clip, 2	85117	Counting Code Key Lever (9-14), 1		
82685	Roll of Perforator Tape, 10				
82702	Screw (6-40 x 9/32), 10				
82714	Synchronous Motor, 1/40 H.P., 110 V., A.C., 50 Cycle, 12				
82841	Switch Commutator, 12				
82845	Washer, 12				
82848	Brush Holder (with Brush), 12				
82850	End Shield (with Oiler), 12				
82860	Spring, 4				
82912	Character (RPT), 4				
83384	Back Space Pawl, 9				
83385	Feed Pawl Release Cam, 9				
83386	Back Space Lever, 9				

85257	Non-Repeat Latch, 4	85774	Screw (10-32 Pilot), 9	86074	Cable, 12
85260	Bracket, 3	85775	Screw (1/4-32 Pilot), 9	86081	Worm Shaft (R.H.), 3
85261	Roller, 3	85776	Punch Control Lever, 9	86087	Garter Spring, 3
85262	Stud, 3	85777	Link, 9	86090	Reset Collar, 3
85265	Transfer Bail, 4	85778	Punch Control Bail, 9	86103	Zero Lever Bail, 3
85266	Shaft, 4	85779	Clamp Plate, 9	86201	Space Pawl, 7
85267	Transfer Bail Arm, 4	85780	Locating Plate, 2	86203	Post, 8
85268	Transfer Bail Bracket, 3	85782	Guide, 4	86204	Reset Lug, 2
85269	Spring Bracket, 3,4	85784	Roller, 3	86205	Guide, 2
85270	Shaft, 4	85785	Cross Shaft Bearing, 3	86206	Shim, 2
85276	Zero Lever Support, 3	85787	Zero Lever, 3	86209	Stud, 3
85279	Zero Lever Bail Support, 3	85788	Collar, 3	86213	Eccentric Bushing, 7
85281	Cross Shaft and Gear, 3	85789	Center Guide, 4	86214	Adjusting Collar, 8
85282	Gear-38 T, 3	85790	Retaining Plate (Long), 6	86215	Reset Collar Lever, 3
85283	Spacer Bail, 7	85791	Spacer, 4	86216	Screw (4-40 Shoulder), 8
85284	Shaft, 7	85792	Bushing, 4	86252	Vertical Link, 8
85285	Bracket, 6	85793	Stud, 3	86253	Release Lever, 8
85286	Return Clutch Throw-out Lever, 3	85795	Guide Plate, 3	86273	Spring, 9
85291	Shaft, 6	85797	Punch Unit Cover (Lower), 9	86278	Hub, 3
85296	Worm Shaft, 6	85798	Plate, 2	86279	Gear, 3
85309	Clutch, 3	85800	Shim, 9	86296	Spring, 4
85310	Spring, 3	85801	Spacer Rod, 7	86301	Set of Tools, 13
85312	Start Disc, 3	85802	Cam Sleeve, 3	86303	Bracket, 4
85313	Friction Disc, 3,6	85803	Spacer, 3	86304	Spring, 3
85314	Spring, 3	85804	Main Shaft, 3	86305	Stator (with Winding), 11
85315	Nut, 3	85805	Spring, 3	86306	End Shield, 11
85316	Return Cam, 3	85806	Repeat Key Lever (Assem.), 4	86307	End Shield, 11
85317	Pin, 3	85807	Spacer, 10	86308	Screw (10-32 x 4-3/8), 11
85318	Washer (Leather), 3	85809	Tape Reel Container Cover, 10	86309	Outlet Bushing, 11
85319	Oil Plug, 3	85810	Chad Box, 9	86310	Washer (Steel), 11
85320	Gear - 75 T, 3	85811	Upstop, 2	86311	Rotor, 11
85321	Spacer, 3	85814	Stop Plate, 10	86312	Washer (Felt), 11
85322	Gear - 48 T, 12	85815	Bracket (with Rod), 10	86313	Spring (End Play), 11
85324	Start Disc, 3,6	85824	Plunger Ring, 4	86314	Washer (Steel), 11
85325	Spacer, 3	85825	Plunger (Assem.), 4	86315	Oil Retainer, 11
85326	Gear (Assem.), 3	85826	Retaining Plate (Short), 6	86316	Screw (8-32 x 1-3/16), 11
85327	Oil Wick, 3	85827	Space Key Lever, 2,4	86317	Washer (Bronze), 11
85328	Stop Blade, 3,6	85828	Carriage Return Key Lever (1), 5,6	86318	Split Ring Adapter, 11
85329	Garter Spring, 6	85917	Bearing, 3,7	86319	Washer (insulating), 11
85330	Reset Collar, 6	85931	Spring Post, 3,4	86320	Screw (8-32 x 31/32), 11
85331	Drive Arm, 3,6	85933	Bearing Cap, 3	86321	Split Ring (with Screws), 11
85332	Nut (3/16-40 Hex.), 6	85934	Screw (1/4-32 Pilot), 9	86322	Ball Bearing, 11
85333	Bracket, 3	85935	Spring Post, 3,4	86323	Nut (7/16-24 Hex.) - Right Hand, 11
85334	Fulcrum Disc, 3	85936	Post, 5	86324	Nut (7/16-24 Hex.) - Left Hand, 11
85335	Guide Disc, 3	85937	Insulator, 5	86325	Outout (with Springs), 11
85336	Guide Disc, 3	85947	String, 8	86326	Spring, 11
85337	Code Disc #1, 3	85948	Repeat Key Lever, 4	86327	Bushing (Fibre), 11
85338	Code Disc #2, 3	85956	Screw (4-40 Eccentric Shoulder), 7	86328	Washer (Bakelite), 11
85339	Code Disc #3, 3	85957	Spacer, 7	86329	Screw (4-40 x 7/16), 11
85340	Code Disc #4, 3	85958	Motor, 1/20 H.P., 110 V., D.C., 11	86330	Oiler, 11
85341	Bushing, 3	85966	Bracket, 7	86340	Capstan Wrench, 13
85342	Spacer, 3	85967	Spring Post, 7	86341	Screw (.190-32 x 3/16 Set), 3,4
85343	Washer, 3	85968	Thumb Screw, 7	86342	Rotor (Comp.), 11
85344	Stud, 3	85969	Pivot Adjusting Block, 7	86524	Shaft, 4
85345	Index Pin Guide, 3	85970	Washer (Spring), 7	86534	Clamp, 4
85346	Shaft, 3	85971	Spacer, 7	86559	Retaining Plate (End), 2
85347	Stop Pin Plunger, 3	85972	Nut (6-40 Hex.), 7	86560	Retaining Plate (Center), 2
85348	Cover Plate, 3	85973	Lever, 7	86561	Clamp, 2
85349	Spring Disc, 3	85976	Spacer, 7	86614	Motor, 1/20 H.P., 220 V. D.C., 11
85350	Punch Unit Bracket, 9	85980	Space Rack Slide, 7	86615	Rotor (Assem.) (with Bearings & Switch), 12
85351	Spring Post, 9	85981	Spacing Rack, 7	86616	Spring, 12
85354	Bearing Plate, 9	85982	Right Pointer Rack, 7	86617	Rotor (Assem.), 12
85355	Plate, 9	85985	Left Pointer Rack, 7	86713	Screw (4-48 x 5/16), 12
85356	Punch Block (Assem.) (Advanced Feed Hole), 9	85986	Bracket, 7	86714	Spacer, 12
85357	Bracket, 9	85987	Retaining Pawl, 7	86738	Support Plate, 3
85361	Vertical Lever #0 or #5, 9	85991	Bell Hammer, 7	86739	Screw (6-40 x 1/4 Special), 3
85362	Vertical Lever #1 or #4, 9	85992	Spacer, 7	86740	Screw (4-40 x 3/16), 3
85363	Vertical Lever #2 or #3, 9	85993	Pawl, 7	86746	Screw (6-40 Shoulder), 4
85364	Punch Levers, 9	85994	Stud, 7	86752	Lamp (220 V.), 5
85366	Tape Guide, 9	85995	Justification Pointer (Right), 7	86755	Bottom Plate, 2
85367	Punch Unit Cover (Upper), 9	85996	Justification Pointer (Left), 7	86756	Cup, 6
85368	Tape Guide Spring, 9	85997	Gear Segment, 7	86757	Spacer, 6
85371	Punch Hammer, 9	85998	Spacer, 7	87182	Celluloid Disc, 4
85372	Feed Pawl, 9	85999	Cam, 7	87101	Paper Keypop (A), 1
85373	Shaft, 9	86000	Post, 7	87102	Paper Keypop (B), 1
85376	Key Lever Spring, 2	86001	Detent, 4	87103	Paper Keypop (C), 1
85378	Punch (Large), 3	86016	Pinion - 12T, 12	87104	Paper Keypop (D), 1
85471	Screw (10-32 x 1), 3	86017	Gear - 40T, 12	87105	Paper Keypop (E), 1
85754	Latch Arm, 7	86021	End Shield (with Oiler), 11	87106	Paper Keypop (F), 1
85755	Screw (3/8-32 Pilot), 2	86025	Pad (Top), 10	87107	Paper Keypop (G), 1
85756	Unshift Bracket, 4	86069	Armature, 12	87108	Paper Keypop (H), 1
85759	Sliding Indicator Scale, 8	86070	Motor, 1/30 H.P., 110 V. A.C., 25 Cycle, 12	87109	Paper Keypop (I), 1
85760	Washer, 8			87110	Paper Keypop (J), 1
85767	Bearing, 8				
85772	Detent Bail, 9				
85773	Roller, 9				

NUMERICAL INDEX

87711	Paper Keypop (K), 1	91041	Wound Stator (with Base), 12
87712	Paper Keypop (L), 1	91115	Power Cord, 2
87713	Paper Keypop (M), 1		
87714	Paper Keypop (N), 1		
87715	Paper Keypop (O), 1		
87716	Paper Keypop (P), 1		
87717	Paper Keypop (Q), 1		
87718	Paper Keypop (R), 1		
87719	Paper Keypop (S), 1		
87720	Paper Keypop (T), 1		
87721	Paper Keypop (U), 1		
87722	Paper Keypop (V), 1		
87723	Paper Keypop (W), 1		
87724	Paper Keypop (X), 1		
87725	Paper Keypop (Y), 1		
87726	Paper Keypop (Z), 1		
87727	Paper Keypop (1 ffi), 1		
87728	Paper Keypop (2 ffi), 1		
87729	Paper Keypop (3 ?), 1		
87730	Paper Keypop (4 *), 1		
87731	Paper Keypop (5 ff), 1		
87732	Paper Keypop (6 lb), 1		
87733	Paper Keypop (7 &), 1		
87734	Paper Keypop (8 -), 1		
87735	Paper Keypop (9 fi), 1		
87736	Paper Keypop (0 fi), 1		
87737	Paper Keypop (;), 1		
87738	Paper Keypop (\$), 1		
87739	Paper Keypop (v), 1		
87740	Paper Keypop (-@), 1		
87741	Paper Keypop (v), 1		
87742	Paper Keypop (v), 1		
87743	Paper Keypop (.), 1		
87744	Paper Keypop (Blank), 1		
87745	Paper Keypop (Rub Out), 1		
87746	Paper Keypop (Thin Space), 1		
87747	Paper Keypop (En Space), 1		
87748	Paper Keypop (Em Space), 1		
87749	Paper Keypop (En Ld), 1		
87750	Paper Keypop (Em Ld), 1		
87751	Paper Keypop (Vert Rule), 1		
87752	Paper Keypop (UR LR), 1		
87753	Paper Keypop (Unshift), 1		
87754	Paper Keypop (Shift), 1		
87755	Paper Keypop (Ret), 1		
87756	Paper Keypop (Elev.), 1		
87757	Paper Keypop (Tape), 1		
87758	Paper Keypop (P F), 1		
87759	Paper Keypop (Bell), 1		
87697	Open Wrench (1/2 - 3/4), 13		
87942	Bracket (Assem.), 4		
87943	Bracket (Assem.), 4		
88699	Eccentric Bushing, 5		
88749	Bearing Sleeve, 3		
88750	Nut, 3		
88751	Washer (Slotted), 3		
88752	Washer (Felt), 3		
88753	Washer, 3		
88754	Shaft, 3		
88803	Spring, 7		
88976	Screw (6-40 Shoulder), 7		
88994	Aluminum Foot, 2		
88995	Bearing Post, 2		
88996	Space Bar Loop, 2		
88997	Cross Bar, 2		
88999	Return Actuating Lever, 5		
89000	Extension, 5		
89003	C. R. Key Lever, 1,2,5		
89004	Cable Clamp, 2		
89005	Screw (6-40 Shoulder), 5		
89006	Cross Beam Unit (Assem.), 5		
89394	Star Wheel, 9		
89395	Nut, 9		
89405	Spacer, 12		
89406	Washer, 12		
89407	Cotter Pin, 12		
89408	Bushing, 4		
89462	Gear - 48T, 12		
89463	Pinion - 12T, 12		
89478	Base (with Bracket, Bearing Cap, Screws & Lockwashers), 3		
89954	Socket Wrench (1/4), 13		
89955	Socket Wrench (5/16), 13		
91012	Cover (Assem.), 10		
91037	Collector, 12		
91038	Stator (with Winding), 12		

