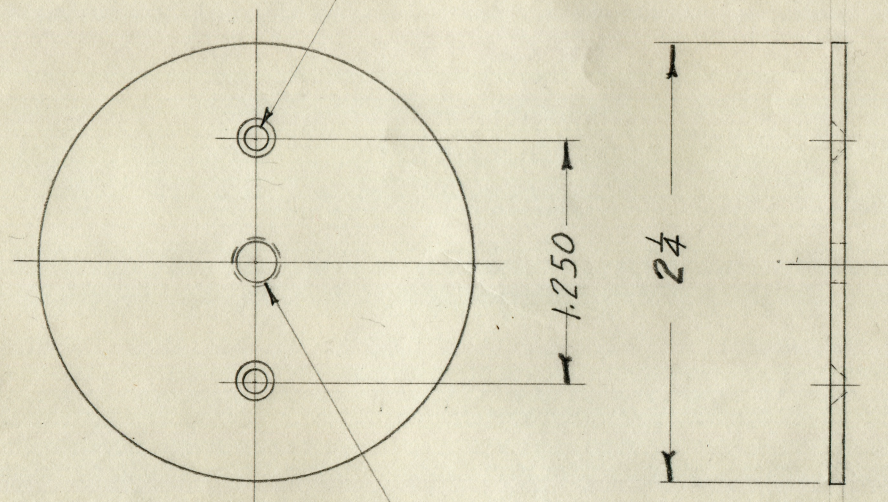


PART NO. A-25 D

.128 Dia. C'sink For $\frac{1}{8}$ Dia. Flat Top C'sunk Rivets
Rivet Head Below Surface Of Disk 2 Holes



Tapped $\frac{1}{4}$ -28 After Riveting To Cup

DATE Nov. 19-47

MAT. $\frac{1}{16}$ x $2\frac{1}{2}$ CR Strip

SCALE 1=1

DWG. No. B- 1972

LINOTYPE PARTS COMPANY, INC.

SOUTH HACKENSACK, N. J.

PART NO. A-25 D

Back Mold Wiper
Cup Disk