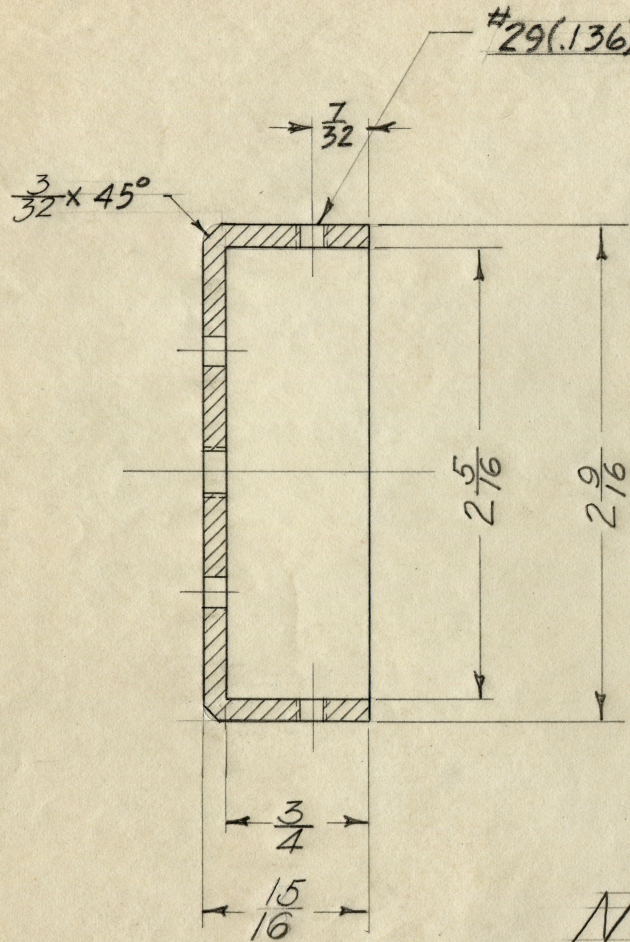
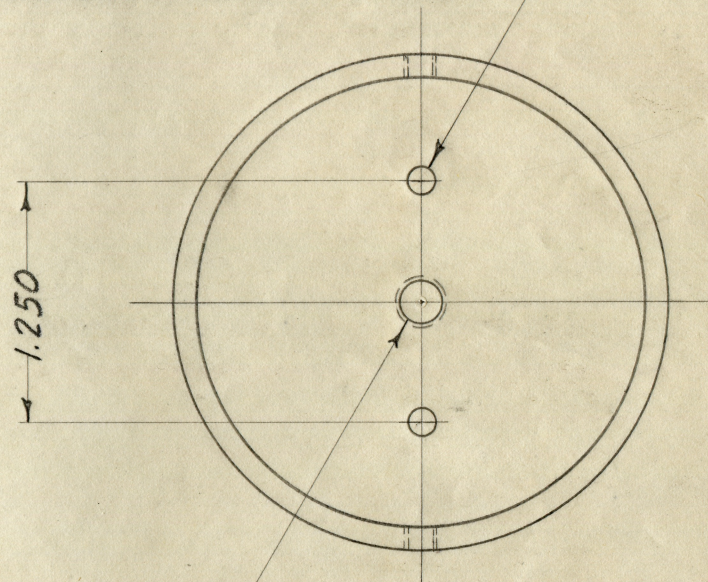


PART NO. A-25 A



#29(.136) Tap 8-32 2 Holes
#30(.1285) Dr. C'sink For $\frac{1}{8}$ Dia.
Flat Head Rivets 2 Holes



#3(.213) Dr. Tap $\frac{1}{4}$ -28 On
Assembly With Cup Disk

Note:
Finish all Over

DATE July 14-47
MAT. Cast Alum
SCALE 1=1
DWG. NO. B-1744

LINOTYPE PARTS COMPANY, INC.
SOUTH HACKENSACK, N. J.

PART NO. A-25 A
Improved Back Mold
Wiper Cup