

UNLESS OTHERWISE SPECIFIED

FRACTIONS ±

DECIMALS ±

ANGLES ±

LINOTYPE PARTS COMPANY, INC.

SOUTH HACKENSACK

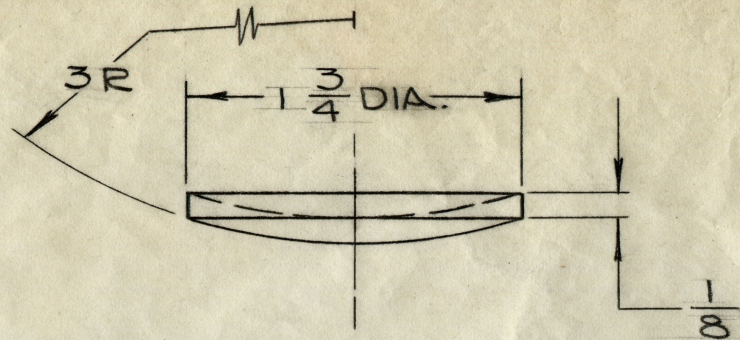
NEW JERSEY

PART No. A-13-2

REVISIONS

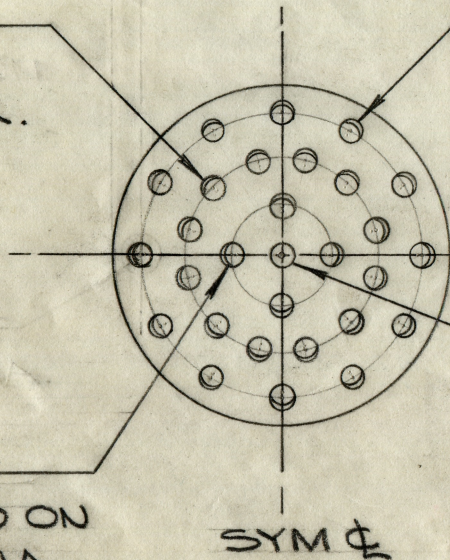
DATE

A



12-HOLES  $\frac{1}{8}$  DIA.  
EQUALLY SPACED  
AS SHOWN. 1 DIA.  
CIRCLE.

12-HOLES  $\frac{1}{8}$  DIA. EQUALLY  
SPACED ON  $\phi$  AS SHOWN.  
 $\frac{15}{32}$  DIA. CIRCLE.



SYM  $\phi$

$\frac{1}{8}$  DIA. HOLE

SYM  $\phi$

4-HOLES  $\frac{1}{8}$  DIA.  
EQUALLY SPACED ON  
 $\phi$  AS SHOWN.  $\frac{1}{2}$  DIA  
CIRCLE.

(FOR STAMPING VENDOR ONLY)

DATE 12-13-55 Dwg. No. B-4410

SCALE 1=1 Dwn. E.A.W.

NAME LADLE - POT  
CRUCIBLE WELL  
SKIMMER

MATERIAL:  $\frac{1}{8}$  THK. C.R.S.

PART No. A-13-2