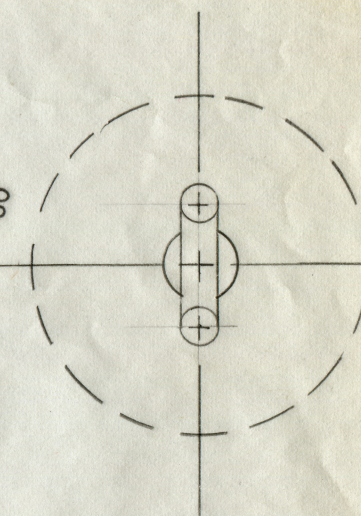
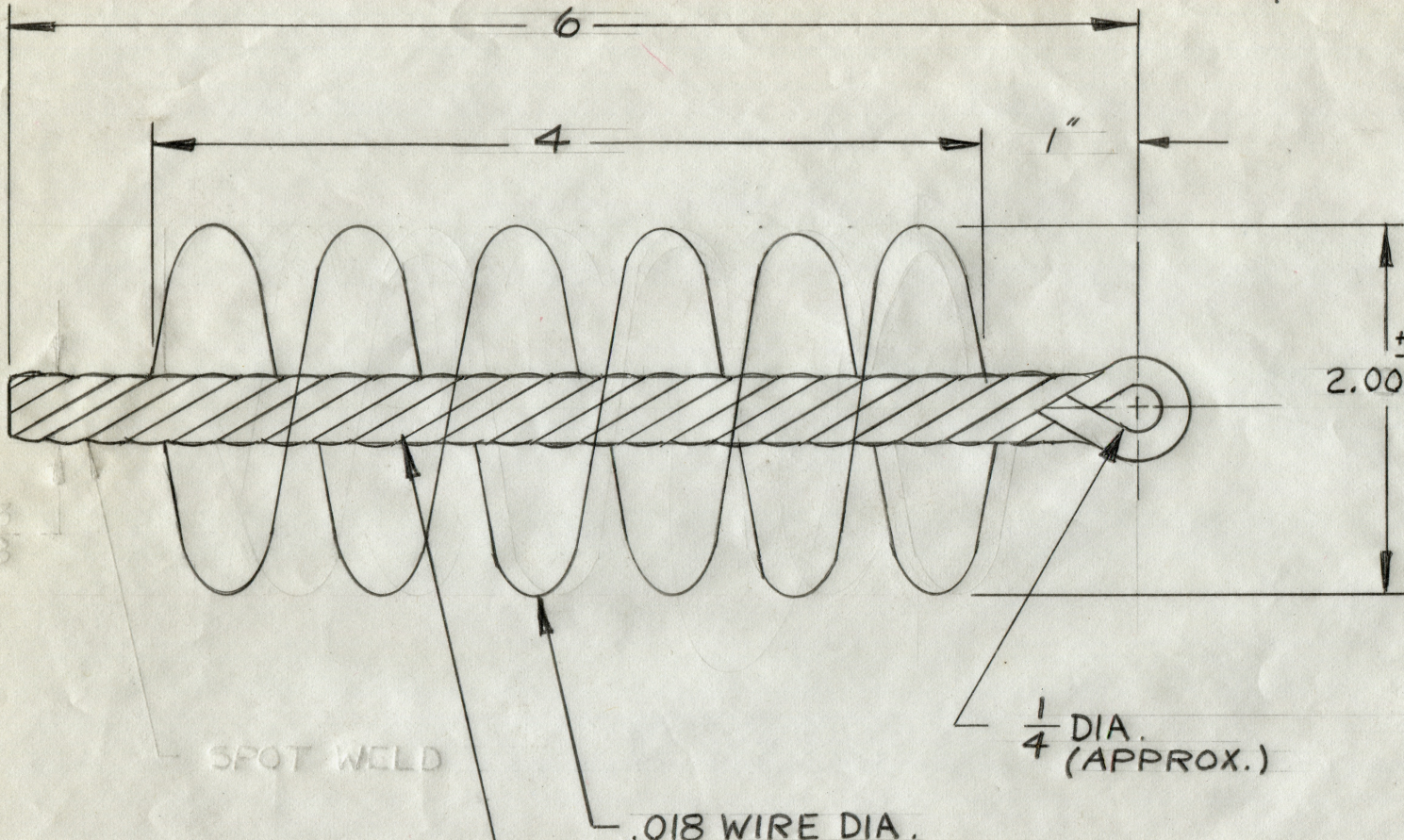


TOLERANCES UNLESS OTHERWISE SPECIFIED  
 FRACTIONS  $\pm 1/64$  DEC. 2 PL  $\pm .01$   
 ANGLES  $\pm 1^\circ$  DEC. 3 PL  $\pm .005$

STAR PARTS, INC.  
 SOUTH HACKENSACK NEW JERSEY

PART No. A-6-A

REVISIONS	DATE
A	



FOR VENDER USE ONLY

SPOT WELD

.018 WIRE DIA.

1/8 DIA. STEM WIRE

1/4 DIA. (APPROX.)

CHK. <i>JH</i>	APPR.
DATE 9-22-67	Dwg. No. B-8746
SCALE 1=1	DWN. <i>V.W.G.</i>
NAME BRUSH, SPOT WELL	
PART No. A-6-A	

MATERIAL: PURCHASED (STEEL WIRE BRUSH) UNDER A-6