

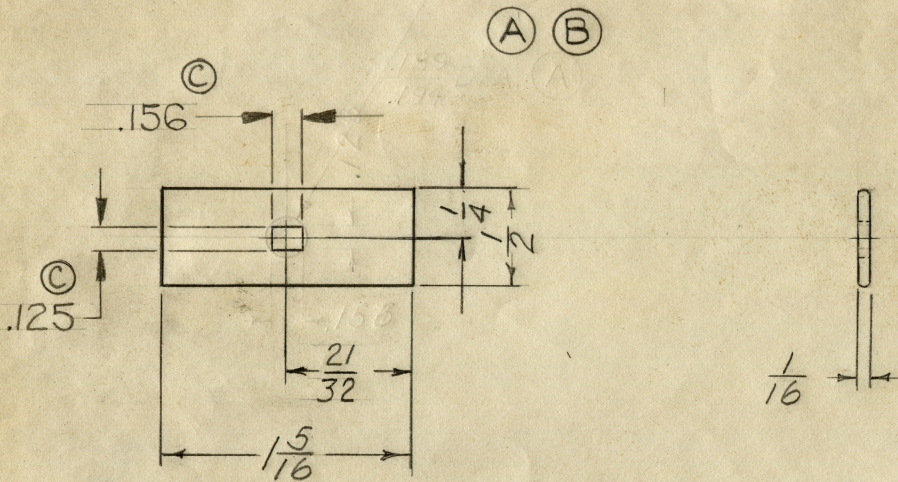
TOLERANCES UNLESS OTHERWISE SPECIFIED

FRACTIONS $\pm \frac{1}{64}$ DEC. 2 PL $\pm .010$

ANGLES $\pm 1^\circ$ DEC 3 PL $\pm .005$

PART NO. A3-2

REVISIONS		DATE
A	HOLE WAS .128 x .156	5-31-63
B	C.R. 0046 WAS $\frac{.189}{.194}$ DIA.	8-29-63 F.H.
C	WAS $\frac{7}{32}$ DIA CR1166	12-23-64



MATERIAL: $\frac{1}{16} \times \frac{1}{2}$ ROUNDED EDGE FLAT WIRE

DATE July 17-47

MAT. SEE ABOVE

SCALE 1=1

DWG. NO. B-1747

LINOTYPE PARTS COMPANY, INC.

SOUTH HACKENSACK, N. J.

PART NO. A3-2

Asbestos Retainer-
Pot Mouth Wiper