



**WILLIAM REID CO.**  
**Chicago 14**

2271 Clybourn Ave.

Diversey 3766

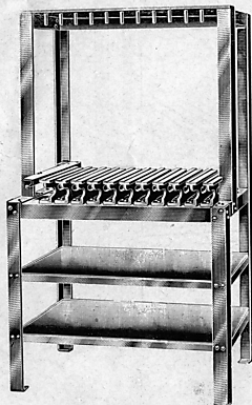
Business started in 1912 making special tools and appliances for Linotype and Intertype users, typesetting machines used in printing plants and newspapers. Makers of gages, special cutting tools and form milling cutters. Makers of vacuum pumps for following uses: milking machines, on large printing presses to operate automatic paper feeder. Laboratory use. Will also build special vacuum pumps to suit users requirements.

**MAGAZINE!**  
**How Shall He Store It!**

**MAGAZINE!**  
**Where Shall He Put It!**



**IN A REID RACK**



**X-1530**

Linotype Magazine Rack for 12 full length above and 2 steel shelves below.

Weights (all racks) shipped ready to use. Not damaged in use or shipping —not crated.

X-1530 .....	165 lbs.
X-1530 with 8 shelves.....	300 lbs.
X-1531 .....	205 lbs.
X-1532 .....	140 lbs.
X-1533 .....	115 lbs.
X-1574 .....	155 lbs.
X-1582 .....	305 lbs.
X-1639 .....	410 lbs.
X-1640 .....	240 lbs.
X-1743 .....	300 lbs.

*Like this model*



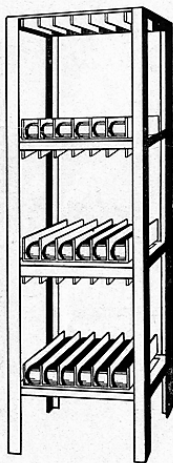
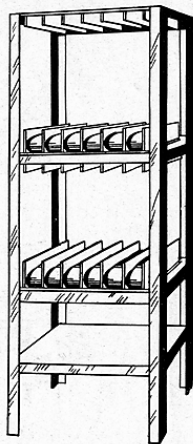
**X-1531**

Linotype Magazine Rack for 12 full length above and 12 split below.

**REID INTERTYPE MAGAZINE RACKS**

**W-3912**

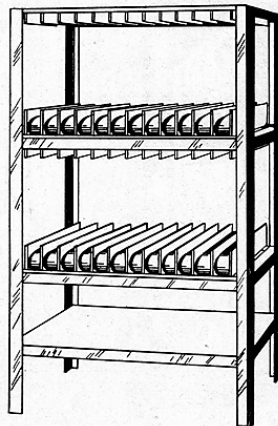
Store 6 Split Above  
6 Split Below  
190 lbs.



**REID INTERTYPE MAGAZINE RACKS**

**W-3911**

Store 18 Split  
250 lbs.



**REID INTERTYPE MAGAZINE RACKS**

**W-3914**

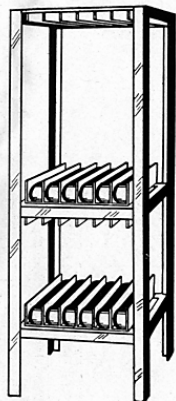
36" Wide, 26" Deep  
Store 12 Split Above  
12 Split Below  
300 lbs.

**WILLIAM REID CO., 2271 Cly**

**REID INTERTYPE MAGAZINE RACKS**

**W-3898**

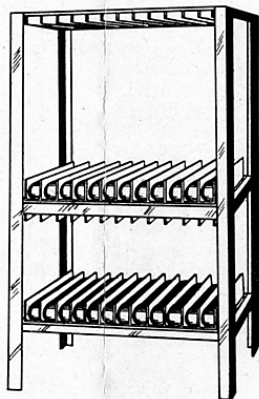
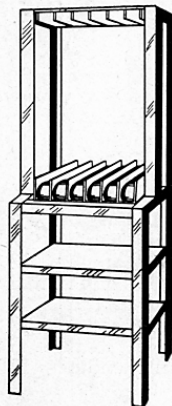
21" Wide, 26" Deep  
Store 6 Full Above  
6 Split Below  
175 lbs.



**REID INTERTYPE MAGAZINE RACKS**

**W-3913**

21" Wide, 26" Deep  
Store 6 Full Above  
2 Steel Shelves Below  
140 lbs.



**REID INTERTYPE MAGAZINE RACKS**

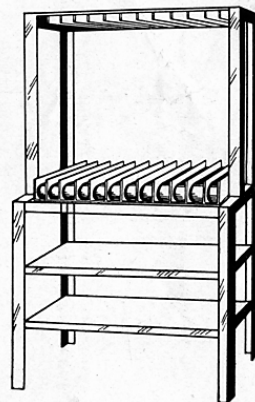
**W-3897**

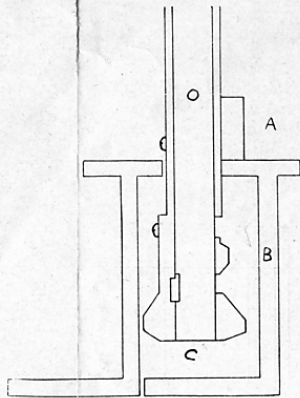
36" Wide, 26" Deep  
Store 12 Full Above  
12 Split Below  
285 lbs.

**REID INTERTYPE MAGAZINE RACKS**

**W-3896**

36" Wide, 26" Deep  
Store 12 Full Above  
2 Steel Shelves Below  
210 lbs.





Mouth of magazine at "C" has plenty of clearance; no possible damage to mats or mouth of magazine.

Slide in on lower bar "A" of magazine on steel rail "B".

Important point is clearance at "C".

Design of rails in Reid Linotype that DO NOT HAVE ESCAPEMENT built in to mouth of magazine — the Model 5, 8, 14, etc.

Part No.	No. Magazines	Below	Floor Space	Price
X-1530	12 Full Length	2 Shelves	36½x26	
X-1531	12 Full Length	12 Split	36½x26	
X-1532	6 Full Length	6 Split	20½x26	
X-1533	6 Full Length	2 Shelves	20½x26	
X-1573	12 Split	12 Split	36½x26	
X-1574	6 Split	6 Split	20½x26	
X-1582	12 Full Length	12 Wide Auxiliary	36½x26	

These Racks are for style of Linotype Magazines that HAVE ESCAPEMENT BUILT INTO MOUTH OF MAGAZINE such as models 27, 28, 33, 34, 35 and 36. These Racks have belt and Roller Rails, for wide full 90 or 72 channel wide split 90 or 72 channel or 72 channel wide auxiliary.

Part No.	No. Magazines	Below	Floor Space	Price
X-1639	12 Split	12 Split	44x26½	
X-1640	6 Split	6 Split	24x26½	
X-1641	12 Split	2 Shelves	44x26½	
X-1742	6 Split	2 Shelves	24x26½	
X-1743	12 Full Length	12 Split	44x26½	
X-1744	12 Full Length	2 Shelves	44x26½	
X-1745	6 Full Length	6 Split	24x26½	
X-1746	6 Full Length	2 Shelves	24x26½	

**WILLIAM REID CO., 2271 Clybourn Ave., Chicago 14, Ill.**

2271  
Bu  
and In  
papers  
of vac  
presse  
specia

Lin  
engt  
ow.