
**STAR (self
actuating) FEEDER**

manual

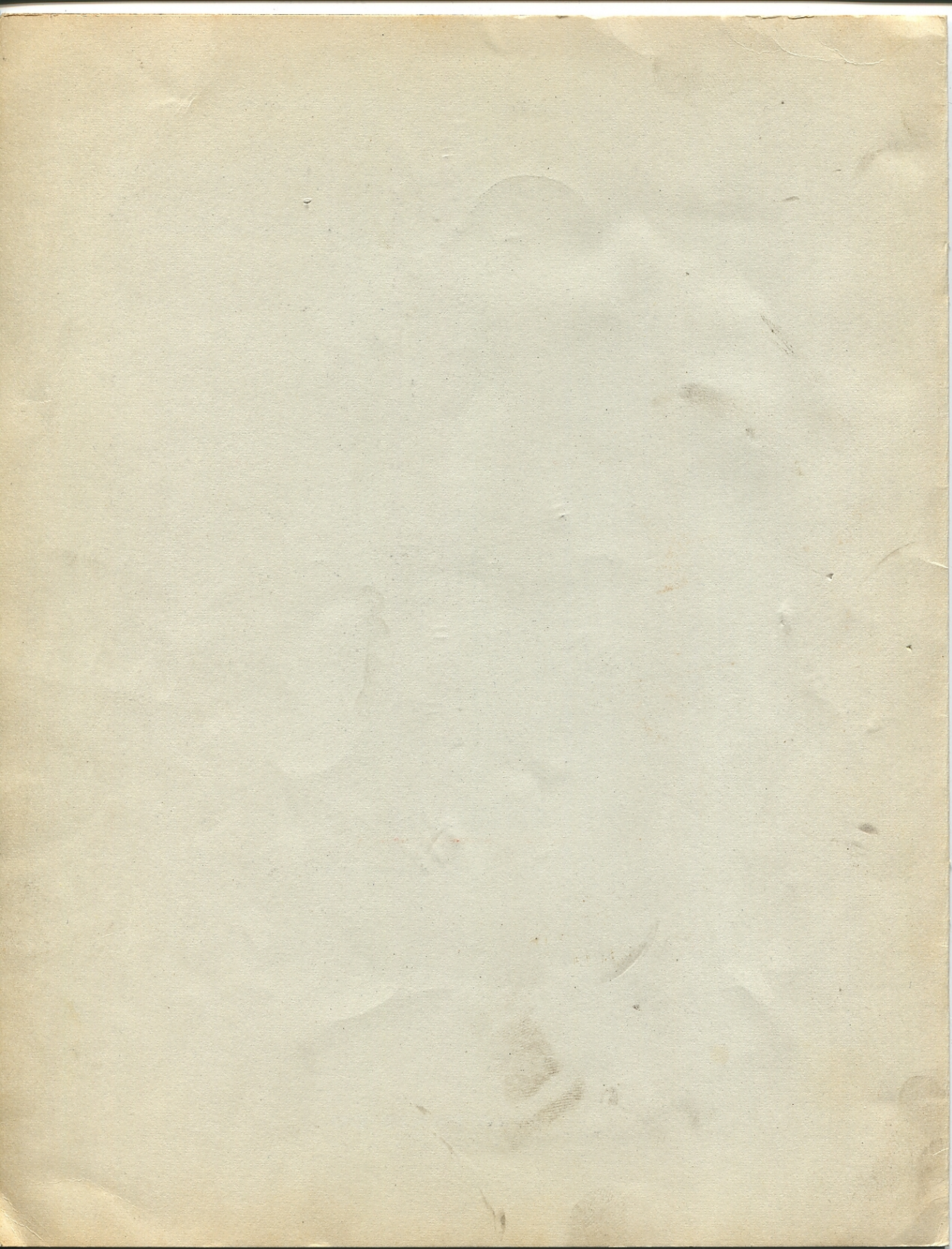
installation • parts list • maintenance

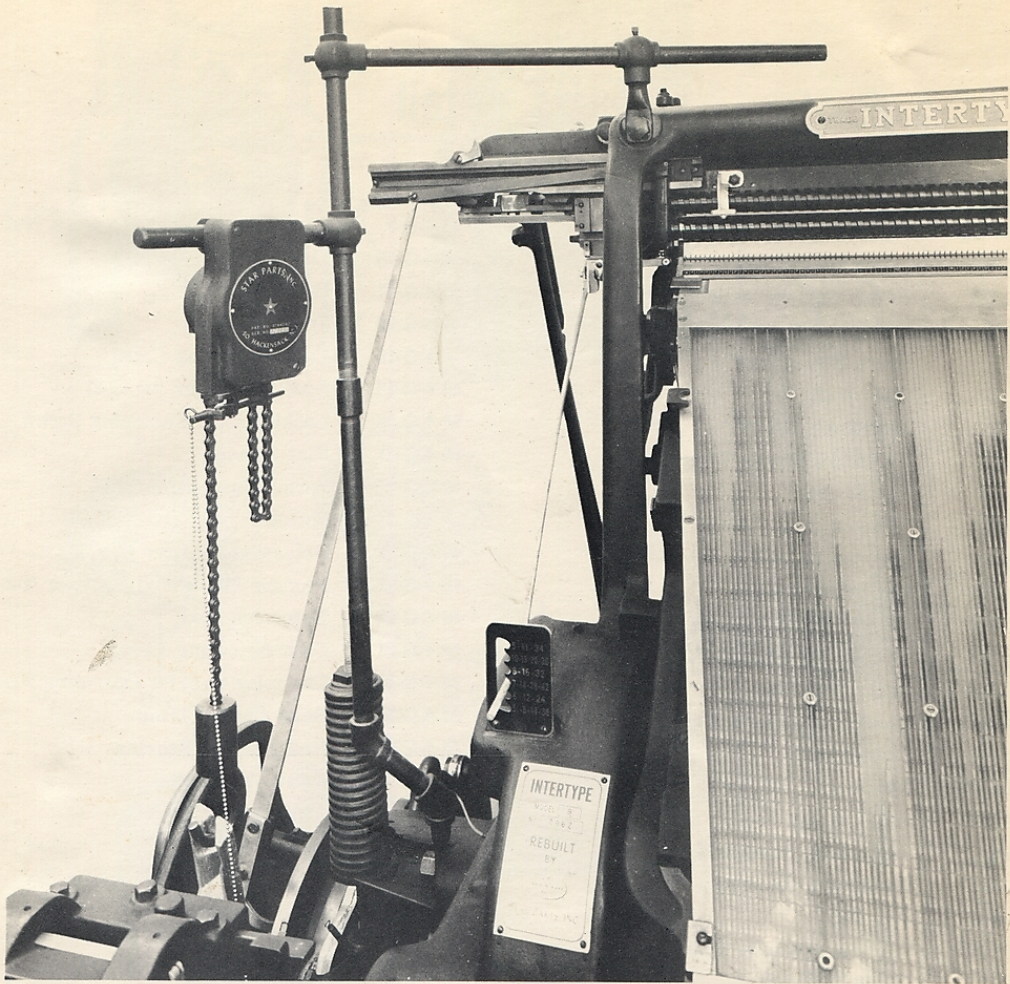


STAR PARTS CO.
SOUTH HACKENSACK, N. J.

A DIVISION OF **POWER & EATON Industries, Inc.**

CHICAGO • DENVER • KANSAS CITY, MO. • LOS ANGELES • MINNEAPOLIS • MONTREAL





installation

ON LINOTYPE or INTERTYPE MACHINE

Adjacent photograph shows how the pipes are assembled and attached to the machine.

Rest float on surface of metal. Pull chain taut and slip chain into the notch of the upper chain coupling. After the level has been definitely established and Feeder is in satisfactory operation, the excess chain may be cut off.

The float rod may swing into any position desired, but the nut above it must be tightened securely for proper operation of the Feeder.

Adjust the stop in the chain so that the pig hook cannot enter the metal.

Be sure all bolts and screws are tightened.

CONTINUED ON PAGE 4



STAR PARTS CO.

SOUTH HACKENSACK, N. J.

A DIVISION OF **POWERS & EATON Industries, Inc.**

CHICAGO • DENVER • KANSAS CITY, MO. • LOS ANGELES • MINNEAPOLIS • MONTREAL

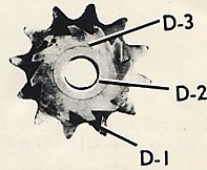
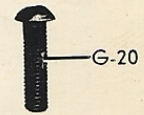
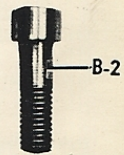
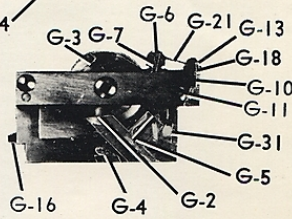
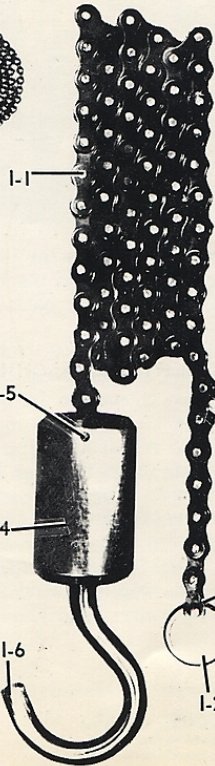
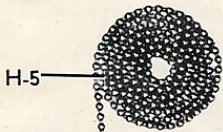
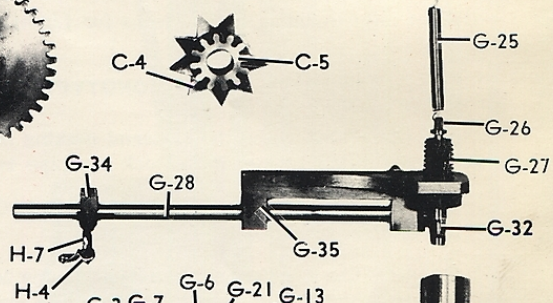
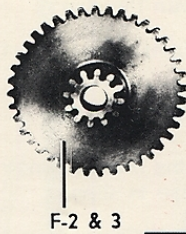
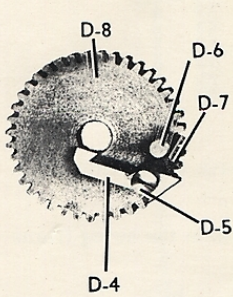
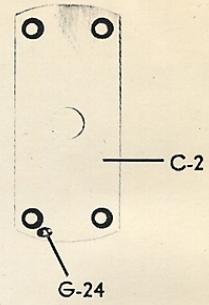
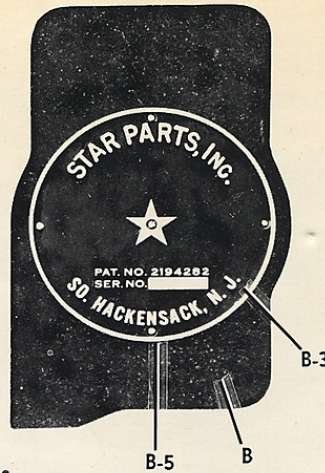
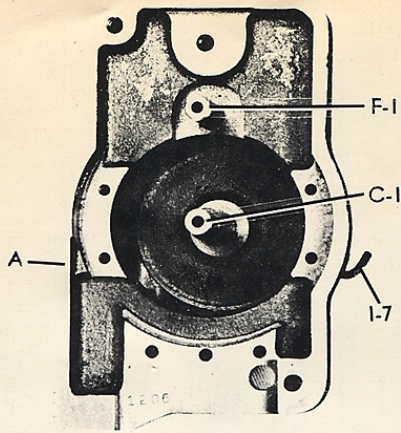
parts detail

M-4A	Housing	M-4-G-7	Brake Shoe Adjusting Lock Nut
M-4-A-2	Clamping Screws	M-4-G-10	Dowel Pin for Bridge
M-4-B-2	Cover Holding Screws	M-4-G-11	Bridge Clamping
M-4-B-3	Linotype Parts Name Plate	M-4-G-13	Spring Screw
M-4-B-5	Name Plate Rivet	M-4-G-16	Lock Actuating Cam
M-4-C-1	Star Shaft	M-4-G-18	Special Washer for G-21
M-4-C-2	Star Shaft Bridge	M-4-G-20	Locking Unit Fastening Screw
M-4-C-3	Star Shaft Bridge Screws	M-4-G-21	Flat Spring
M-4-C-4	9-Tooth Star	M-4-G-24	Spring Suspension Stud
M-4-C-5	12-Tooth Spur Gear	M-4-G-25	Spring
M-4-D	Sprocket & Ratchet Assem.	M-4-G-26	Releasing Plunger
M-4-D-1	12-Tooth Sprocket	M-4-G-27	Plunger Guide and Locking Nut
M-4-D-2	Bushing for D1 and D3	M-4-G-28	Extension Rod
M-4-D-3	12-Tooth Ratchet	M-4-G-31	Cam Actuating Lever
M-4-D-4	Ratchet Pawl	M-4-G-32	Clamping Cam for Operating Plunger
M-4-D-5	Shoulder Screw for Pawl	M-4-G-34	Bead Chain Clamp
M-4-D-6	Spring Stud	M-4-G-35	Rod Holding Bearings
M-4-D-7	Spring	M-4-H	Float, Assembled
M-4-D-8	40-Tooth Spur Gear	M-4-H-4	Coupling
M-4-E	Pendulum, Assembled	M-4-H-5	Beaded Chain
M-4-E-1	Pendulum, Skeleton	M-4-H-6	Float and Chain Coupling Rod
M-4-E-2	Bearing	M-4-H-7	Float Eye Hook
M-4-E-3	Star Escapement Tooth	M-4-H-8	Float
M-4-E-4	Actuated Pawl	M-4-H-9	Coupling Rings
M-4-E-5	Shoulder Screw	M-4-I-1	Roller Chain
M-4-E-6	R. H. Rivets	M-4-I-2	Roller Chain End Stop
M-4-F-1	Gear Shaft	M-4-I-3	Riveting Pin
M-4-F-2 & 3	12-Tooth and 40-Tooth Spur Gear (one unit)	M-4-I-4	Chain Pig Weight
M-4-G-2	Actuated Member	M-4-I-5	Chain Fastening Pin
M-4-G-3	Pendulum Pawl Actuating Pin	M-4-I-6	Pig Hook
M-4-G-4	Locking Brake Shoe	M-4-I-7	Chain Suspension Hook
M-4-G-5	Brake Shoe Adjusting Pin	M-4-I-9	Chain Stop Adjuster
M-4-G-6	Brake Shoe Adjusting Screw	M-4-I-10	Chain Stop Adjuster Screw

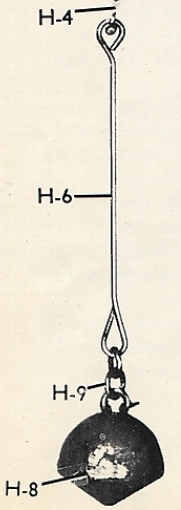
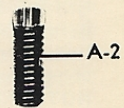


STAR PARTS CO.
SOUTH HACKENSACK, N. J.

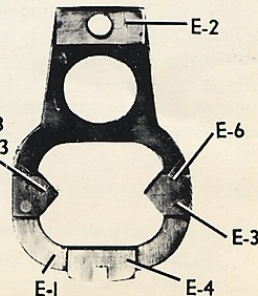
A DIVISION OF **POWERS & EATON Industries Inc.**
CHICAGO • DENVER • KANSAS CITY, MO. • LOS ANGELES • MINNEAPOLIS • MONTREAL



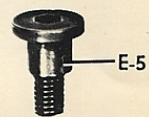
D ASSEMBLY



H ASSEMBLY



E ASSEMBLY



installation

ON LUDLOW MACHINES

The bracket provided is attached to the back of the machine. All machines have the appropriate holes for the bolts at the right side.

The feeder head should be positioned so as to permit the pig to feed into the metal at the point of its greatest depth, away from heating elements.

Adjust float as described in instructions for Linotype and Intertype, beginning with second paragraph.

ELROD MACHINES

Remove the oiler. In place of spacers, insert the two brackets which come with the Feeder. The lower bracket is the one with the stop.

Float adjustment is the same as for Linotype and Intertype.

ON MONOTYPE MACHINE

The Giant Caster and the material making machines now have a lug with a hole cast on the swing frame, into which the pipe is slipped.

The composing machine and Type and Rule Caster have holes in the swing frame for the bracket provided with the feeder.

For older Composition and Material Making Machines, another bracket is supplied on request, which is attached to any suitable place on the swing table.

Float adjustment is the same as for Linotype and Intertype.

maintenance

LUBRICATION—Experience in the individual plant will be the guide for length of time between lubrications. On the average, we would suggest a check every two or three months.

Remove the cover and put two or three drops of light oil in the hollow shafts; on the shaft which goes through the oscillating brake drum; and on the brake shoe rest. The shaft which holds the brake shoe rest comes through the back of the housing. It can also be oiled from that point.

CLEANING—Depending on local conditions for the time interval, it is good practice to clean the mechanism occasionally. The gears may be removed, but before doing so, be sure to remove any pig remaining on the hook, and to hold the hook so it cannot drop into the molten metal.

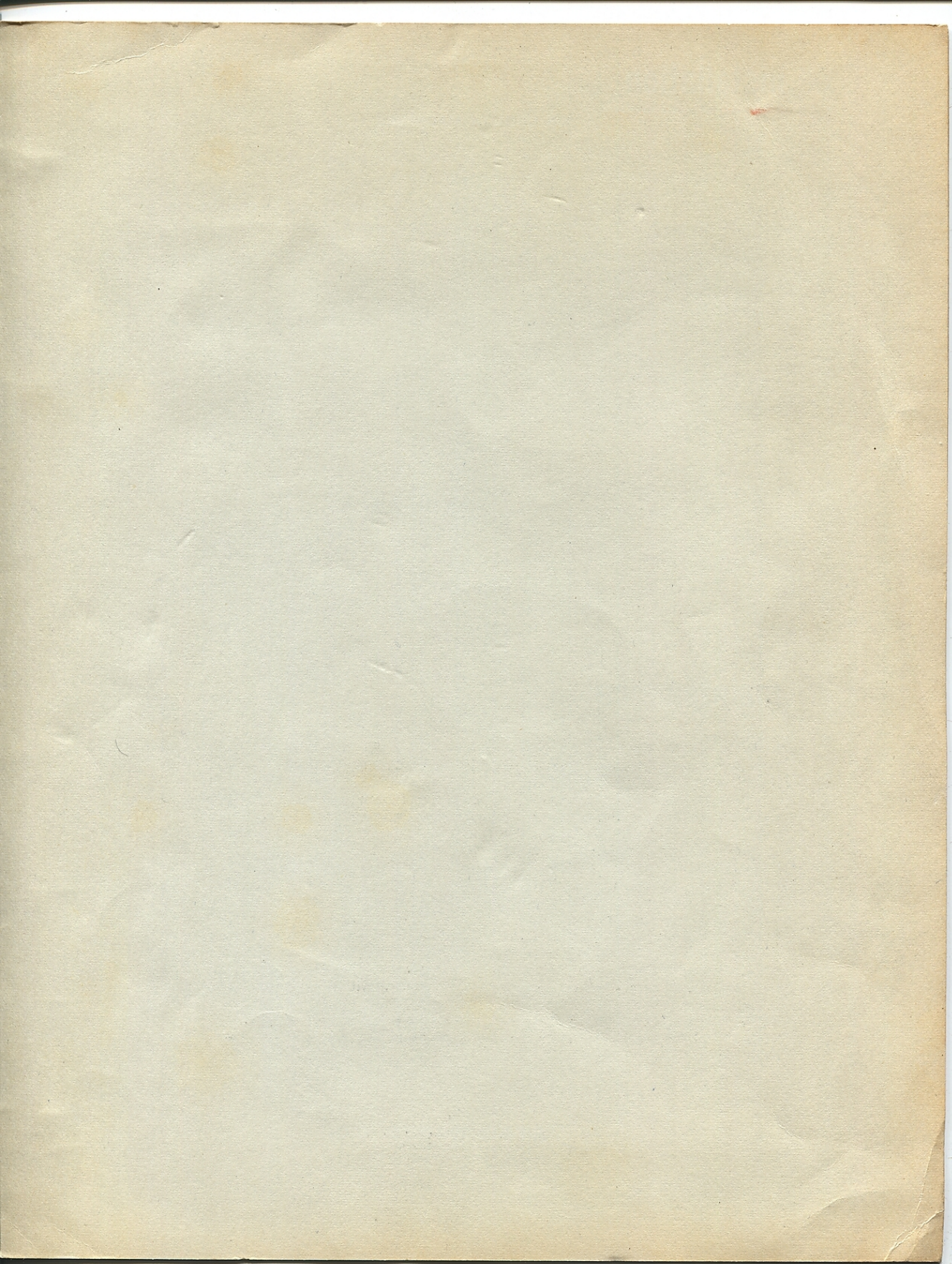
ADJUSTMENT—The only adjustment which may be required of the internal feeder mechanism is the brake. This, however, should be done at the factory. This adjustment is required only when the feeder brake no longer holds. Star Parts will gladly make this adjustment gratis for you, should any be needed within ten years of the date of purchase.

NOTE: Should it be necessary to return the feeder to the factory for adjustment, please write explaining the nature of the trouble you are having and send the **feeder head only**, transportation prepaid.



STAR PARTS CO.
SOUTH HACKENSACK, N. J.

A DIVISION OF **POWERS & EATON Industries, Inc.**
CHICAGO • DENVER • KANSAS CITY, MO. • LOS ANGELES • MINNEAPOLIS • MONTREAL





STAR PARTS CO.

SOUTH HACKENSACK, N. J.

A DIVISION OF **POWERS & EATON Industries, Inc.**

CHICAGO • DENVER • KANSAS CITY, MO. • LOS ANGELES • MINNEAPOLIS • MONTREAL