

Now. Printing you can do yourself.

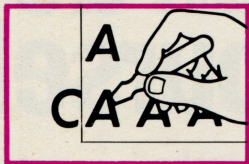
(That looks
like a printing
press did it).



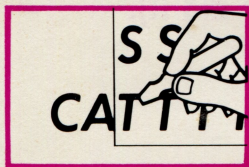
**Here's how to make
printing-press quality
lettering. (With an ice
cream stick and a sheet
of Prestype).**



1. Place enclosed Prestype sheet on any dry, clean surface.



2. Using the stick, transfer the letter from the sheet to the surface by rubbing firmly.



3. Line up next letter and repeat operation until you've completed project.

Try it here:



Use Prestype almost anywhere:
Signs, labels, posters, monograms,
stickers, headlines, menus, names,
report covers, place cards, charts
and graphs, you-name-it.



See back of package
for complete selection available—
or ask dealer.



Prestype, Inc.
194 Veteran's Blvd.
Carlstadt, NJ 07072
(201) 933-6011

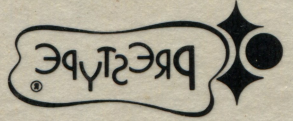
Now. Printing you can do yourself.

(That looks
like a printing
press did it).



U.S. PAT. 3013917 Printed in U.S.A.

Prestype, Inc.
194 Veteran's Blvd.
Carlstadt, NJ 07025
(201) 933-6011



R.V.A.

DOG **DOG** **DOG** **DOG** **DOG**

TAC **TAC** **TAC** **TAC** **TAC**

DOG **DOG** **DOG** **DOG** **DOG**

CAT **CAT** **CAT** **CAT** **CAT**

DOG **DOG** **DOG** **DOG** **DOG**

TAC **TAC** **TAC** **TAC** **TAC**

Rub letters firmly for quality print
lettering. Simple, fast, easy—
economical, too! 24



GO ABC X
P e f d W
T G g u
X B p t
1 B p t

Place this sample over any clean surface. Rub individual letter with ball point pen or paper clip until the letter releases from sheet. Place backing sheet over letters and rerub for a more permanent bond.

U.S. PAT. 3013917 Printed in U.S.A.

PRESTYPE®

GO ABC
P T X 1
et q d G B
X W
u t



Place this sample over any clean surface.
Rub individual letter with ball point pen or
paper clip until the letter releases from
sheet. Place backing sheet over letters
and rub for a more permanent bond.

U.S. PAT. 3013917 Printed in U.S.A.

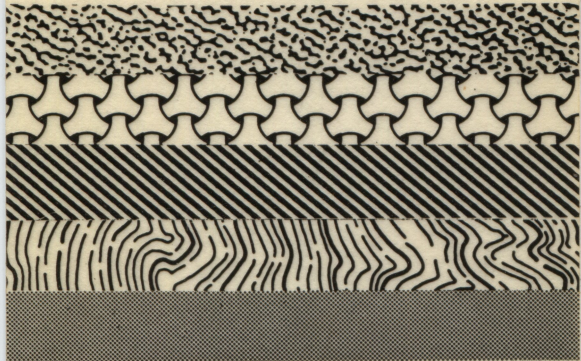
...from



All Presfilm sheets are printed on a heat resistant transparent pressure sensitive acetate film that can be easily cut and trimmed.

Presfilm adheres at a touch, yet may be easily removed and repositioned without causing any damage to the working surface.

SHADING FILMS Here are a few samples of the over 200 patterns and screens.



COLOR FILMS Here is one of the wide range of tones and tints available.



ASK YOUR DEALER for the folder illustrating the complete line of our color tints and shading films or write Presfilm, Div. of Prestype, Inc., 194 Veterans Blvd., Carlstadt, N.J. 07072.